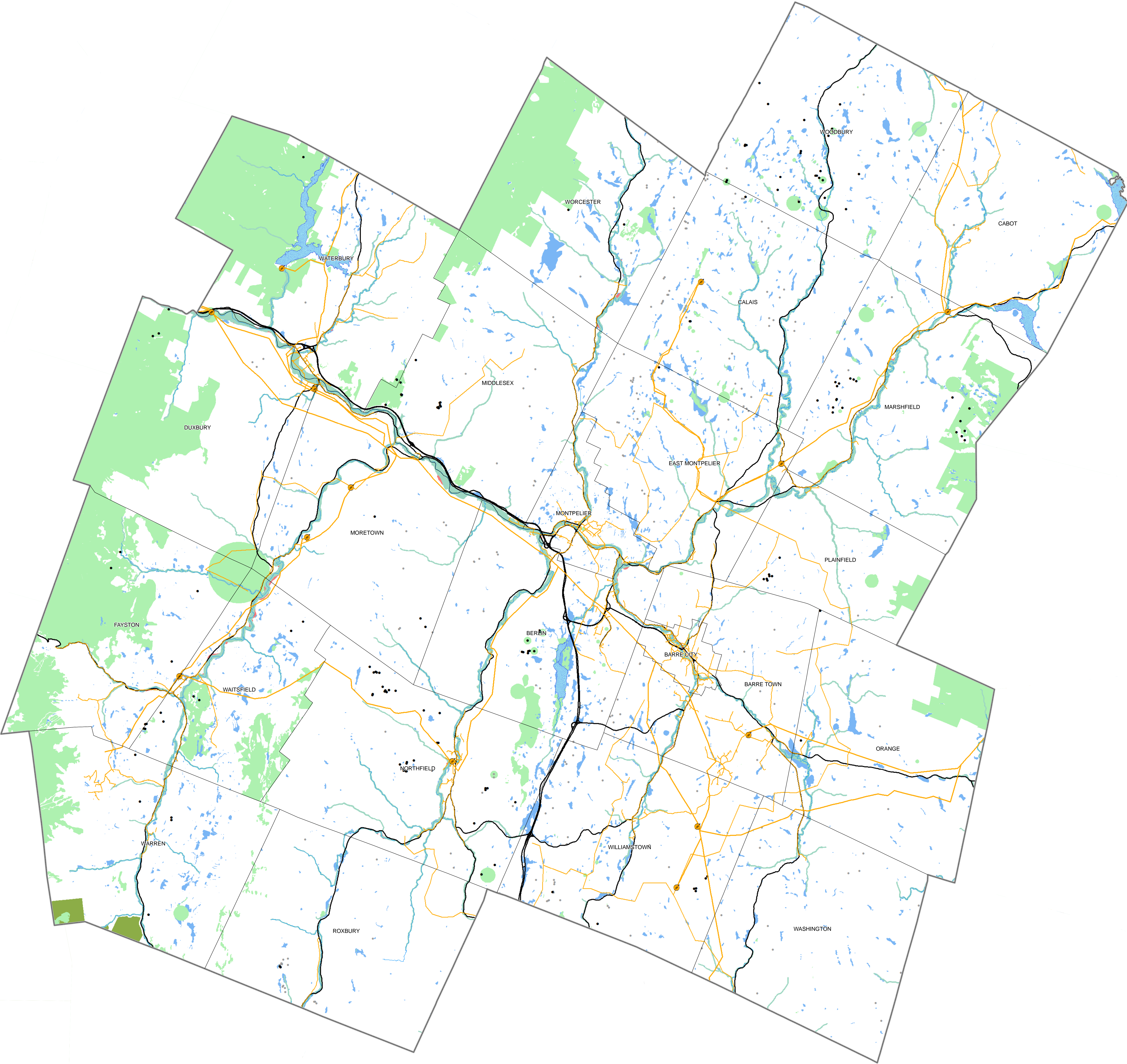


Central Vermont Regional Planning Commission

Energy Planning Known Constraints

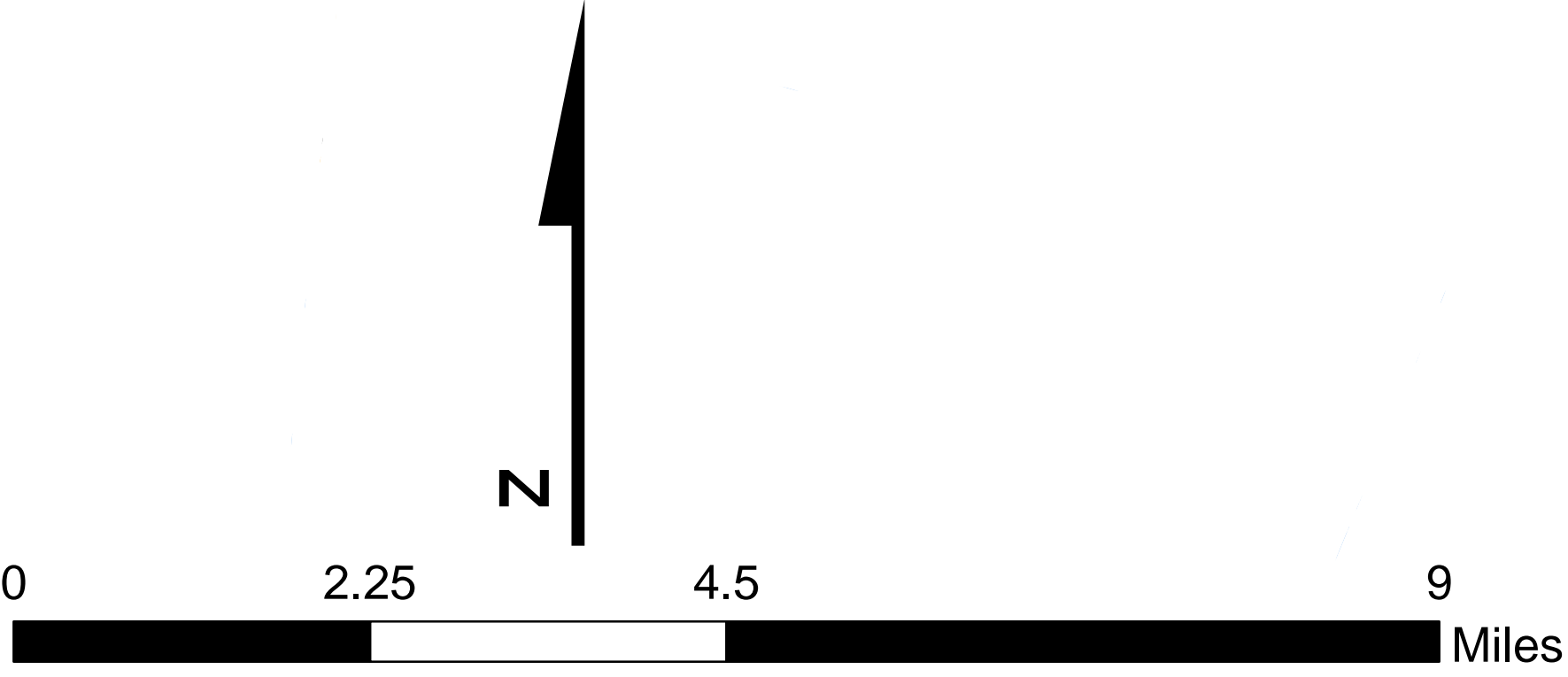
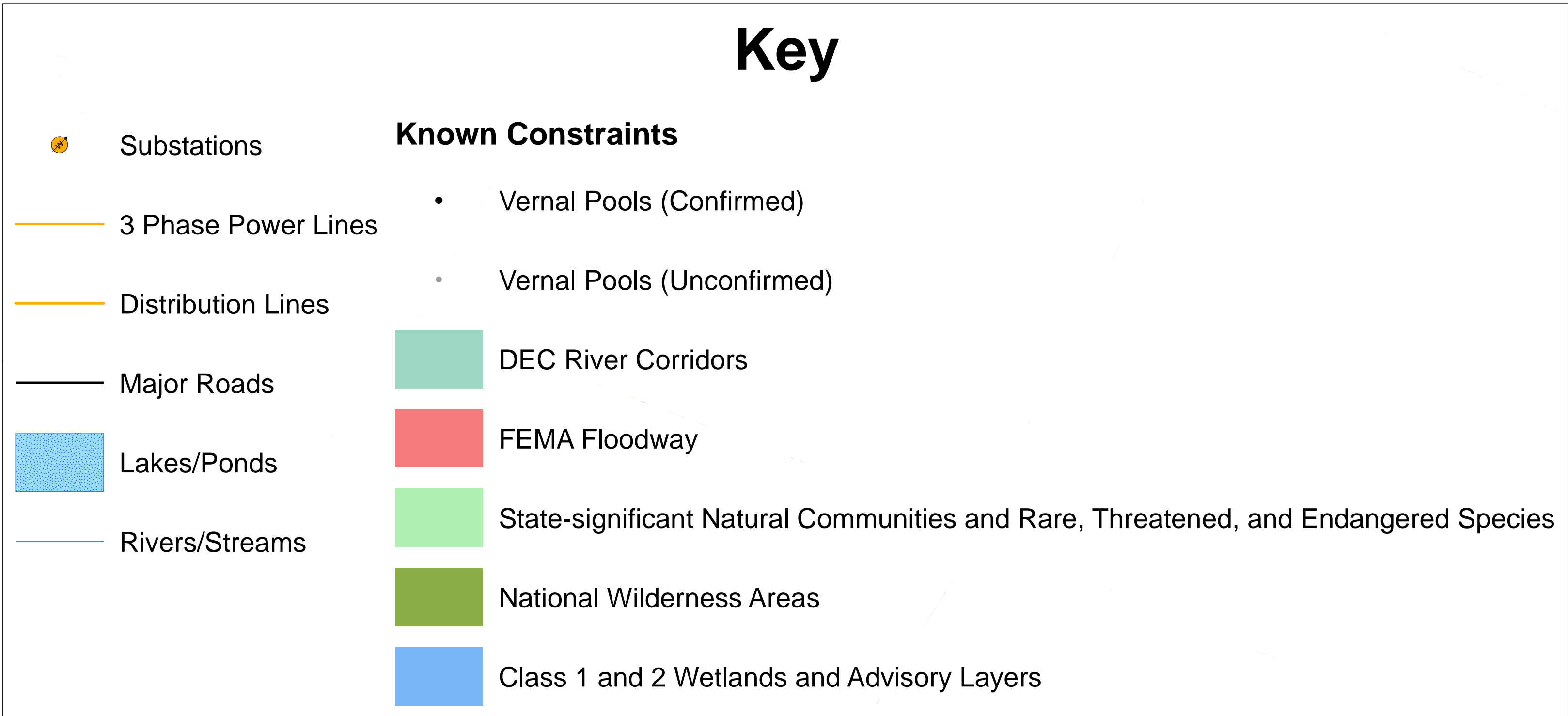
DRAFT



Known Constraints

These constraints signal likely, though not absolute, unsuitability for development based on statewide or local regulation or designated critical resources.

Link to Data - <http://vcgi.vermont.gov/opendata/act174>



Known Constraints
Vernal Pools including confirmed and unconfirmed - Vermont Fish and Wildlife
DEC River Corridors - DEC WSMD Rivers Program 1/2/15
FEMA Floodway included in Zones AE - FEMA Map Service Center
State-significant Natural Communities and Rare, Threatened, and Endangered Species - Vermont Fish and Wildlife, Natural Heritage Inventory
National Wilderness Areas - USDA Forest Service
Class 1 and Class 2 Wetlands (VSWI) and Advisory Layers - VT Watershed Management Division

This map was created as part of a Regional Energy Planning Initiative being conducted by the Bennington County Regional Commission, and the Vermont Public Service Department.

Created: December 2016 by CVRPC GIS.

