



Central Vermont Regional Planning Commission

BOARD OF COMMISSIONERS

December 13, 2016 at 7:00 pm

Central VT Chamber of Commerce

Paine Turnpike South, Berlin

(Coming off the interstate at exit 7, turn left at the first light.

At the next crossroads, the Chamber is on your left. It is the light yellow building.)

AGENDA

<u>Page</u>	<u>Time</u>	<u>Description</u>
	7:00	Adjustments to the Agenda
		Public Comments
2	7:05	Meeting Minutes – November 8, 2016 (enclosed)*
5	7:10	Staff Reports (enclosed) and any updates
11	7:15	Executive Director's Report (enclosed) and any updates
	7:25	Central VT Economic Development Corporation Report , <i>Jamie Stewart</i>
	7:30	Act 250 Agricultural Lands Mitigation Mapping Project , <i>Lauren Masseria</i> , <i>Vermont Agency of Agriculture</i> The Agency of Agriculture created a data layer visualizing Act 250 Onsite Mitigation. This layer includes all areas that have been set aside via permit condition since 2006.
	8:15	Regional Energy Planning , (enclosed)*
12		– Regional Energy Committee Rules of Procedure, <i>Eric Vorwald</i>
15		– Level I & II constraints for renewable energy potential maps, <i>Dan Currier</i>
22	8:45	Resolution Regarding Regular Meeting Dates (enclosed)* VT Open Meeting Law [1 V.S.A. §312(c)(1)] requires public bodies to adopt a resolution setting the time and place of regular meetings. The attached resolution, if adopted, would fulfill this requirement for CVRPC.
	9:00	Adjournment

* denotes anticipated action item

CENTRAL VERMONT REGIONAL PLANNING COMMISSION

MINUTES

November 8, 2016

Commissioners:

<input checked="" type="checkbox"/>	Barre City	Janet Shatney	<input checked="" type="checkbox"/>	Montpelier	Tina Ruth, Secretary
<input checked="" type="checkbox"/>	Barre Town	Byron Atwood, Chair	<input type="checkbox"/>		Kimberly Cheney, Alt.
<input type="checkbox"/>		Mark Nicholson, Alt.	<input checked="" type="checkbox"/>	Moretown	Dara Torre
<input type="checkbox"/>	Berlin	Robert Wernecke	<input checked="" type="checkbox"/>	Northfield	Laura Hill-Eubanks
<input type="checkbox"/>		Karla Nuissl, Alt.	<input type="checkbox"/>	Orange	George Malek
<input type="checkbox"/>	Cabot	Dick Payne	<input checked="" type="checkbox"/>	Plainfield	David Strong, Treasurer
<input type="checkbox"/>	Calais	Paul Rose	<input type="checkbox"/>		Robert Atchinson, Alt.
<input type="checkbox"/>		Jan Ohlsson, Alt.	<input type="checkbox"/>	Roxbury	Gerry D'Amico
<input checked="" type="checkbox"/>	Duxbury	Brian Fitzgerald	<input checked="" type="checkbox"/>	Waitsfield	Don La Haye
<input type="checkbox"/>		Alan Quackenbush, Alt.	<input checked="" type="checkbox"/>		Harrison Snapp, Alt.
<input checked="" type="checkbox"/>	E. Montpelier	Julie Potter, Vice Chair	<input type="checkbox"/>	Warren	Camilla Behn
<input type="checkbox"/>		Jack Pauly, Alt.	<input type="checkbox"/>	Washington	Gary Winders
<input type="checkbox"/>	Fayston	Carol Chamberlin	<input checked="" type="checkbox"/>	Waterbury	Steve Lotspeich
<input type="checkbox"/>	Marshfield	Ivan Shadis	<input checked="" type="checkbox"/>	Williamstown	Larry Hebert
<input checked="" type="checkbox"/>	Middlesex	Ron Krauth	<input type="checkbox"/>	Woodbury	Michael Gray
			<input checked="" type="checkbox"/>	Worcester	Bill Arrand

Staff: Bonnie Waninger, Eric Vorwald, Marion Wolz, Daniel Currier

Guests: Danielle Owczarski, Watershed Coordinator (VT DEC), Jamie Stewart (CVEDC)

CALL TO ORDER

Chair B. Atwood called the meeting to order at 7:00 pm. The meeting began with introductions.

ADJUSTMENTS TO THE AGENDA

None.

PUBLIC COMMENTS

None.

MEETING MINUTES

*J. Shatney moved to approve the October 11, 2016 minutes as presented; T. Ruth seconded.
Motion carried.*

STAFF REPORTS

No report

EXECUTIVE DIRECTOR'S REPORT

B. Waninger reported on the VT Emergency Preparedness Conference highlights and the new Emergency Preparedness Grant. It is project and deliverable based and no longer provides for general assistance. Laura Ranker is managing that grant and will be providing guidance out to

1 municipalities soon on what are eligible tasks under this project. Bonnie praised Laura for her
2 efforts applying for and receiving these funds.

3
4 **CENTRAL VERMONT ECONOMIC DEVELOPMENT CORPORATION REPORT**

5 J. Stewart provided a report to the commission. He highlighted a number of important programs
6 and programs that CVEDC is starting including the creation of a new startup loan for small and
7 micro businesses, providing more technical assistance, and mentoring for small business. The
8 creation of 2-3 Makerspaces in Central VT will help provide space, equipment, mentoring, and
9 networking.

10
11 **PUBLIC HEARING – LAMOILLE TACTICAL BASIN PLAN**

12 *D. La Haye moved to enter into public hearing for the Lamoille Tactical Basin Plan at 7:35 pm;*

13 *R. Krauth seconded. Motion carried.*

14
15 D. Currier and D. Owczarski presented on the Lamoille Tactical Basin Plan. Owczarski
16 reviewed the process of created the Lamoille Tactical Basin Plan, the partner's involved, top
17 priorities, and projects that are included.

18
19 B. Atwood requested comments on the Basin Plan. No members of the public were present.
20 Commissioners asked questions about the P, which Currier and Owczarski answered.

21
22 *S. Lotspeich moved to exit the public hearing at 8:05 pm; J. Potter seconded. Motion carried.*

23
24 Currier reviewed the recommendation on the draft Plan's conformance with the goals and
25 objectives of our 2016 Regional Plan. A memo on his findings was included in the packet.
26 Commissioners asked questions about the memo, which Currier and Owczarski answered.

27
28 *D. Strong moved to find that the draft Lamoille Tactical Basin Plan is in conformance with the*
29 *goals and objectives of the 2016 Regional Plan; B. Fitzgerald seconded. Motion carried.*

30
31 Currier reviewed the recommended project priorities for CVRPC based on the 2016 Regional
32 Plan, existing work programs and the draft Lamoille Tactical Basin Plan. These include:

- 33 1. Protect river corridors and support stream equilibrium by implementing high priority
34 projects identified in River Corridor Plans
35 2. Inventory municipal road erosion features that discharge into surface water
36 and prioritize and implement best management practices
37 3. Engage priority communities in stormwater master planning and implementation

38
39 A memo discussing these priorities was included in the packet. Commissioners asked questions
40 about the Memo, which Currier answered.

41
42 *S. Lotspeich moved to accept these as project priorities for CVRPC as the memo outlines; J.*
43 *Potter seconded. Motion carried.*

REGIONAL ENERGY PLANNING

E. Vorwald and M. Wolz presented on the Regional Energy Planning including Central Vermont's current energy profile, the LEAP model projections, and the Energy Resource Mapping. Commissioners asked questions about the presentation, which Vorwald and Wolz answered. More detail about the Energy Resource Maps will be presented and discussed at the December Commission meeting.

ENERGY ADVISORY COMMITTEE

Vorwald discussed interest in the five Commissioners seats for the Regional Energy Committee (REC).

D. Strong moved to appoint the following Commissioners to the Regional Energy Committee: Janet Shatney, Brian Fitzgerald, Don La Haye, Julie Potter and Ron Krauth; B. Arrand seconded. Motion carried.

S. Lotspeich moved to table the discussion of the Energy Committee Rules and Procedures to the December meeting; L. Hill-Eubanks seconded. Motion carried.

ADJOURNMENT

L. Hill-Eubanks moved to adjourn at 9:04 pm; S. Lotspeich seconded. Motion carried.

Respectfully submitted,

Daniel Currier

Central Vermont Regional Planning Commission

802/229-0389

Staff Report, December 2016

Fax: 802/223-1977

LAND USE PLANNING

Regional Plan: Contact Eric Vorwald, vorwald@cvregion.com.

Staff worked to build the Regional Plan implementation element. Staff identified specific goals, policies, and objectives from the 2016 Central Vermont Regional Plan that outline future actions. This information will be used for evaluating and tracking the effectiveness of the Plan.

Energy Planning: Contact Eric Vorwald, Vorwald@cvregion.com.

Regional Planning – Staff has been working with data provided by the Vermont Energy Investment Corporation (VEIC) which establishes energy targets for the region. These targets serve as the basis for the region to achieve its share of the State’s comprehensive energy planning goal of 90% of the Vermont’s energy being produced by renewable resources by 2050 (90x50). A Regional Energy Steering Committee will advise the Commission on goals and policies related to energy usage, needs, and siting. The Committee includes representatives from the Commission, municipalities, renewable energy stakeholders, transportation experts and utilities among other parties. The Committee will meet December 12 to discuss regional mapping constraints. Recommendations will be presented to the Board of Commissioners on December 13.

Standards & Guidelines: The Department of Public Service released final local and regional energy standards and guidelines. RPCs and municipalities desiring to have “substantial deference” during Public Service Board reviews will need to meet these guidelines. CVRPC is hosting a training on the Energy Planning Guidelines for Municipal Plans and Act 174 on December 14, 6-8 PM, at the Brown Public Library in Northfield. Contact Marian Wolz, wolz@cvregion.com to register.

Local Energy Planning - CVRPC has funding available to assist at least three municipalities develop comprehensive energy plans. These plans can be stand along or updated elements of a municipal plan. CVRPC is soliciting letters of interest from municipalities desiring assistance; letters must be received by December 19. Municipalities that can demonstrate support from both the Planning Commission and Selectboard will be considered priorities for assistance.

Town Plan Updates: CVRPC staff continues to review draft text for town plan updates. Most recently, Cabot requested review of its draft plan sections. Plans adopted after July 1, 2015 now have an 8-year expiration. Municipal and regional plans adopted or amended on or after January 1, 2018 must meet new requirements for forest integrity planning. Municipalities applying for Municipal Planning Grants for plan updates should consider this new requirement as part of the application process. Contact Eric Vorwald, vorwald@cvregion.com for information.

MUNICIPAL PLANNING & TECHNICAL ASSISTANCE

East Montpelier Village Master Plan: Staff is working on a buildout analysis for the village that incorporates additional density and a mix of uses for properties along the U.S. 2 and S.R. 14 corridors. Surrounding properties will be proposed to have increased density for residential development. Staff is working on draft development regulations to help implement the vision for the Village of East Montpelier. Work is being completed through a Municipal Planning Grant.

Enhanced Consultations: Staff is reviewing Town Plans for Montpelier and Washington in preparation for consultations. Staff is working to schedule a meeting with the Worcester Planning Commission to review its town plan, including new statutory requirements that have taken effect since the plan was last updated. Staff has also completed plan reviews for Middlesex and Orange and is working to schedule consultations.

Technical Assistance: Staff is working with Calais on a possible Better Connections Grant. The scope of this grant will include possible connections between the East Calais Village and the recreation field to the north, possible traffic calming through the East Calais Village, and identification of park and ride locations that could be used by the community. A pre-application call with the funding partners will help refine the scope and provide guidance to the Town before the grant application is prepared. Applications are due by January 13, 2017.

EMERGENCY PLANNING & HAZARD MITIGATION

LEOPs (Local Emergency Operations Plans) – Staff is working with the American Red Cross Disaster Program Manager, Southern VT to identify the status and nature of the shelters in the region. New information will be added to the LEOP resources and appendices related to the American Red Cross programs, including the Local Disaster Shelter Initiative program, to educate municipalities about the role of the ARC in a disaster. Contact Laura Ranker, ranker@cvregion.com

Trainings and Workshops: Staff participated in the Vermont Emergency Preparedness Conference, taking advantage of the various workshops, networking opportunities, and vendor displays. Other DEMHS training dates can be viewed by going to <http://vem.vermont.gov/event>. Contact Laura Ranker, ranker@cvregion.com

LEPC #5: Davis Muse of the American Red Cross presented on the Local Shelter Initiative Program and other ARC policies at the LEPC's December meeting. The January meeting has been rescheduled to January 9. Emily Harris and Tony Facos will present on the School Crisis Planning, including the role of first responders and the video, Coming Storm will be shown. The LEPC is working to have an FBI representative present. Staff met with members of the CERT/MRC team to provide information and support related to previous grant awards and grant management.

Local Hazard Mitigation Plans (9-Town Project):

Northfield & Fayston: Local hazard mitigation planning in Northfield and Fayston is nearly complete and ready for state and federal review. Northfield's planned mitigation projects include seeking voter approval to construct a new ambulance facility in a flood-safe location, and restoring floodplain parallel to Water Street to reduce flooding in that neighborhood. Fayston will continue exploring engineering feasibility or other mitigation solutions for four hillside slumping sites that threaten local roadways. The municipality also plans to apply for Better Roads funding to inventory and budget for roadway erosion risks. Contact Gail Aloisio, Aloisio@cvregion.com.

Cabot: DEMHS returned comments on the plan. Staff has started to incorporate those comments.

Worcester: Staff attended a Selectboard meeting to discuss the plan status. The fire chief also attended. The draft plan was reviewed in conjunction with the North Branch study. Recommendations were made with respect to mitigation actions for incorporation. Staff presented and explained the Vulnerability Assessment map and analysis and collected the Board's comments. The Board reviewed past mitigation actions, and whether actions were completed.

TRANSPORTATION

Counts: Contact Ashley Andrews, Andrews@cvregion.com, to have a count completed.

Inventories: Staff has been processing the Calais Culvert Inventory and loading that data into VTCulverts. To have your town's inventory updated or to find out more about VTCulverts.org, contact Dan Currier, currier@cvregion.com.

Staff is preparing data summaries for erosion inventories for Moretown, Middlesex, Waitsfield, and Duxbury. The next step is to review the inventories with the Towns and identify top sites for planning and capital budgeting. Staff will be working with Warren, Roxbury and Montpelier on inventories in the upcoming year. Towns apply for Better Roads grants in the spring. If your town wishes to have an inventory done by CVRPC next summer under this funding source, contact Dan Currier, currier@cvregion.com.

Staff attended the monthly transportation planners meeting with VTrans, and participated in the statewide meeting of the On Road Bicycle Plan Phase II.

VTrans is adapting its corridor management plan process into an asset management plan. The adapted planning effort will be piloted on the Route 100/108 corridor. Staff meet with Waterbury and Duxbury to discuss the project, shared baseline data with VTrans, and met with VTrans to review corridor data and discuss strategic outreach to stakeholders.

NATURAL RESOURCES

GIS: Staff assisted Montpelier with updates to historic district and natural resources maps. Staff supported Marshfield's application for Village Center Designation. The application was successful, and Marshfield Village is Vermont's newest Designated Village Center. Designation gives town priorities in grants, and provides access to tax credits for historic properties with commercial uses.

Water Quality: Staff have begun reviewing towns plans that are schedule to be updated in 2016/17 for incorporation of river corridor protection and stormwater management practices. Staff and partners held a meeting to share ideas on outreach and to kick of the update to the Winooski Tactical Basin Plan. Tis plan will expire in 2018 and will include a list of project priorities for our region to help address water quality concerns. Contact Dan Currier at currier@cvregion.com.

Mad River Ridge-to-River Stormwater: The 5-town Ridge to River initiative continues to work to identify actions that can be taken at the municipal level to help mitigate stormwater impacts. The Planning Technical Team continues to develop a list of recommended regulations that a municipality can incorporate to assist in these efforts. The outcome will be a list of best practices that can be utilized and metrics by which a municipality can evaluate its progress towards achieving better stormwater management practices. Ridge to River will host an open house on December 7th to showcase the work that has been completed and inform the community about stormwater issues that may impact their property and their neighbor's property. The effort is funded by the High Meadows Fund through a grant to the Friends of the Mad River.

COMMUNITY DEVELOPMENT

CDBG-18 Elevation: The project consultant, Dubois and King, began field survey work along the Mad River and Thatcher Brook areas. Staff is coordinating communication between landowners and the contractor as the survey crew gathers data. Contact Laura Ranker, ranker@cvregion.com

Washington Access Modification Grant, Calef Public Library: Staff attended job construction meetings and reviewed payroll certifications for Davis Bacon wage compliance. Staff assisted the contractor with understanding revisions and corrected payroll certifications. Staff met with Town and Library representatives to facilitate compliance with grant conditions and assist with grant management. Staff helped the town upload supporting documentation to the online grant system and establish an electronic financial ledger for the financial recordkeeping file. Staff prepared the first requisition for disbursement of VCDP funds for the Town's submittal and coordinated efforts with the VCDP staff for processing the request. This included securing and uploading supporting documentation related to compliance with the Environmental Review Record and meeting Special Conditions of the Grant Agreement. The project is 90% complete.

Plainfield Cutler Memorial Library: Staff is assisting Plainfield to explore a Planning Grant application under the Vermont Community Development Program. Staff attended meetings to explain the program and planning grant application process and help determine whether an application is appropriate. The project will study an upgrade to the library facility and make access modification improvements. A consultant is assisting with grant writing. The Town has requested CVRPC assistance with grant administration if the project is awarded funds. Contact Laura Ranker, ranker@cvregion.com, if your town is interested in exploring a similar grant.

Brownfields: Contact Gail Aloisio, Aloisio@cvregion.com.

The CVRPC Brownfields Committee participated in an Environmental Assessment and Remediation Planning Training, lead by Kurt Muller of The Johnson Company. The Committee completed a walkover of a brownfield site in Barre City to learn about the clues an environmental professional looks for when assessing which types of environmental conditions could be of concern at a property. The Committee also learned how the behavior of different contaminants in soil, groundwater, etc. can affect decisions and the design of the redevelopment, and the different types of treatment, removal or operational management techniques that can be used for clean up.

Staff participated in the Vermont Brownfields Roundtable. Staff learned that properties completing the Vermont Environmental Liability Limitation Program would be protected from liability for newly regulated contaminants, such as PFOAs. This contaminant was found in groundwater in North Bennington in 2016.

NEWS & ANNOUNCEMENTS

Staff Updates: CVRPC learned that Steve Gladczuk, Senior Planner, is unable to return to work. Over the next few months, CVRPC will be transitioning Dan Currier into the transportation planner position. Dan currently manages CVRPC's GIS and water quality programs. Dan has some excellent ideas for how CVRPC might strengthen its transportation planning services for communities and integrate transportation more fully into the Commission's other programs. He has been performing an increasing amount of transportation work over the past few years, including preparing towns for the Municipal Roads General Permit, conducting transportation resiliency studies and road erosion assessments, managing stormwater projects, and answering technical assistance questions. Through that work, he has networked extensively with VTrans staff at the project and policy level. Dan is expected to transition fully by March 1.

CVRPC is currently advertising two positions: a GIS professional to lead its GIS program and assist with water quality work, and a mid- to senior-level environmental planner to assist with land use planning and water quality planning. Information about the positions is available at centralvtplaninng.org.

Bonnie Waninger attended the annual VT Development Conference in Burlington to learn about recent trends in the economy and community supported development. There was also a good session of quick presentations on a several topics, including the new stormwater regulations and Vermont's rail future. The conference provided an opportunity to network with the development community and to hear outside perspectives about Central Vermont's development.

Eric Vorwald attended the annual Vermont Planner's Association meeting in Randolph. Topics discussed at this meeting included the new energy standards and issues related to sign regulations, including the recent U.S. Supreme Court decision in the case of Reed v. Town of Gilbert.

Remember to visit CVRPC's web site at www.centralvtplanning.org to view our blog and for the latest planning publications and news.

Executive Director's Report

November 30, 2016

Connecting Through Conferences

There are so many great ways to learn and sharpen skills these days, why do CVRPC staff participate in conferences and workshops for part of their professional development?

- We meet experts and influencers face to face, giving us the opportunity to share municipal successes and challenges.
- We can explore new tools and ideas with hands on demonstrations, are able to ask questions that are specific to the region's challenges, and receive immediate feedback as we explore how to serve towns better.
- Unlike most online learning, you can step into a random session and discover fresh perspectives.
- The energy of being in a room of like minded or differently minded people harnesses and renews energy.
- Learning in new spaces sparks new approaches; in-person learning fosters the potential for new partnerships for meeting a changing world.

As the fall conference and workshop series draws to a close in Vermont, CVRPC staff will be sharing what we've learned as we meet with communities and committees. Eric participated in the VT Planner's Association Regulatory Language Quiz Show and would be happy to assist towns to determine if their plan language provides a clean and unambiguous legal standard. Marian can share the variety of approaches towns are using to create measurable implementation elements for local plans. Laura is available to run local officials through a 45-minute disaster bootcamp that relays the essentials of responding to and recovering from an event.

RPC/RDC Joint Meeting

Regional Planning Commission and Regional Development Corporation Directors met in November to discuss joint collaboration for the future. What ideas were discussed?

- Cooperative work on economic planning, town plans, and housing development.
- Consulting with businesses regarding preferred locations for solar development during town and regional energy planning.
- Supporting biomass development to enhance the viability of Vermont's forestry industry.
- Water quality, especially stormwater permits for development over three acres.
- Cooperative education and workforce development ventures as an economic development tool.

Local Energy Planning

CVRPC is encouraging municipal officials to participate in its the energy standards training scheduled for December 14 in Northfield. Regardless of whether a municipality is interested in obtaining substantial deference in the Certificate of Good process, the training will include information about town-specific data and maps that will be available to all municipalities by April 30, 2017. Contact Eric (Vorwald@cvregion.com) or Marian (wolz@cvregion.com) for information.



Central Vermont Regional Planning Commission

REGIONAL ENERGY COMMITTEE

RULES OF PROCEDURE

December 13, 2016

PURPOSE: The Regional Energy Committee (REC) serves in an advisory capacity to the CVRPC Board of Commissioners during the development of the Central Vermont Regional Energy Plan. The Committee oversees the Central Vermont Regional Planning Commission's (CVRPC) comprehensive regional energy planning initiatives; provides input on goals, policies, and specific energy resources within the Central Vermont Region; and provides a diverse spectrum of opinions on important local and regional energy planning issues. Upon approval and adoption of the Central Vermont Regional Energy Plan by the Board of Commissioners, the REC may be dissolved or the purpose and membership may be reassigned to meet the future needs of the CVRPC.

GENERAL ACTIVITIES:

- ◆ Provide guidance on regional energy planning needs including possible constraints to consider for future siting locations.
- ◆ Develop a Regional Energy Plan for consideration by the Board of Commissioners and for subsequent submission to the Department of Public Service.
- ◆ Develop and oversee implementation of a public outreach plan to ensure a diverse spectrum of opinions and input is solicited during this process.
- ◆ Provide input and policy recommendations to the Board of Commissioners regarding pertinent regional energy issues, including evaluation of renewable energy resources for compatibility with municipal regulations and existing utility infrastructure.
- ◆ Provide guidance to staff regarding amendments or changes to the draft regional energy plan based on public comments received during the planning process, at committee meetings or during the public comment period.

ADVISORY ROLE: The REC shall be advisory to the Board of Commissioners. The REC will offer advice, input, and opinions to successfully develop a regional energy plan that meets the standards developed by the Department of Public Service for consistency with Act 174 of 2015, provided it is compatible with plans, policies, positions or resolutions adopted by the Board of Commissioners. New or amended plans, policies, positions or resolutions shall be ratified/approved by the Board of Commissioners.

MEMBERSHIP: The REC shall consist of no more than five (5) representatives of the Board of Commissioners and 12 members representing various sectors, interests, and viewpoints. Participation will be solicited from the following sectors, interests, and viewpoints.

- Public Utilities
- Economic Development Interests
- Transportation and Transit
- State Agencies (ANR, DPS, VTrans, etc.)
- Municipal Energy Committee representatives
- Renewable energy developers
- Municipal Representatives
- Other parties as identified by the REC

Membership term shall be for the duration of the regional energy planning project, anticipated to continue until March 1, 2018.

OFFICERS/ELECTIONS: The REC will elect a Chairperson and Vice-Chairperson at the first meeting of the committee. The Chair will be responsible for running meetings, setting agendas in conjunction with staff, reviewing and signing correspondence on behalf of the REC, and representing the REC at various meetings as needed. The Vice-Chair will provide support to the Chair as needed. If the Chair or Vice-Chair should resign before his/her term is expired, an interim election shall be held within two meetings.

ATTENDANCE AND QUORUMS: A quorum shall consist of a majority of members. Members are encouraged to attend all regular meetings and special meetings as they arise.

COMMUNICATION AND COORDINATION:

- ◆ Meetings shall be noticed and held in accordance with Vermont Open Meeting Law.
- ◆ Draft policies and resolutions shall be forwarded to REC members and interested/affected parties for comment before action by the REC, or final action/approval by the Board of Commissioners.
- ◆ Minutes of all regular and special meetings will be prepared by staff, distributed to REC members and interested parties, and made available to the public in accordance with open meeting and public records law described in 1 VSA.
- ◆ REC members are encouraged to serve as liaisons to their respective organizations or interest groups they are representing by facilitating communication and coordination on a regular basis.
- ◆ REC members are encouraged to offer input on all matters before the REC, and are encouraged to bring up items of local or regional concern for REC consideration.

CONFLICT OF INTEREST: In the event any REC member has a personal or financial interest with any individual, partnership, firm or corporation seeking to contract with the CVRPC, or to provide materials or labor thereto, or has a personal or financial interest in any project being considered by the REC, the member shall state on the record the nature of his or her interest. If the member is uncertain whether he/she should participate in the discussion or decision, the REC shall determine by vote whether the member should participate.

The REC may also make a determination of conflict of interest and disallow participation and voting by a member if the majority of voting REC members in attendance at the meeting determine a conflict of interest exists.

ADOPTION OF ORGANIZATIONAL PROCEDURES: The REC may, at any time, vote to amend these procedures, in accordance with quorum requirements noted above. Proposed amendments will be forwarded to REC members before consideration at a regular REC meeting. Amendments will then be forwarded to the Board of Commissioners for ratification.

The REC is not a standing or special committee of the Regional Planning Commission, and is therefore not subject to the Commission's bylaws. These Rules of Procedure, combined with Robert's Rules of Order, provide procedural and administrative guidance for the REC.

Adopted by the Board of Commissioners: _____ / _____ / 2016

Byron Atwood, Chair
CVRPC Board of Commissioners



Central Vermont Regional Planning Commission

MEMO

Date: December 13, 2016

To: Board of Regional Commissioners

From: Dan Currier, Program Manager

Re: Draft CVRPC Energy Planning Maps

Staff requests Commissioners familiarize themselves with Central Vermont's DRAFT Regional Energy Planning Maps. Six maps are under review. They include:

- Known Constraints,
- Possible Constraints,
- Solar Resources,
- Wind Resources,
- Hydroelectric Resources, and
- Woody Biomass Resources.

Commissioners should be prepared to provide input on other Regional constraints not yet included on the maps and potential areas for the development and siting of renewable energy resources.

Some areas for consideration as potential areas for the development and siting of renewable energy resources include: sand/gravel pits, stone quarries, brownfields sites, and landfills.

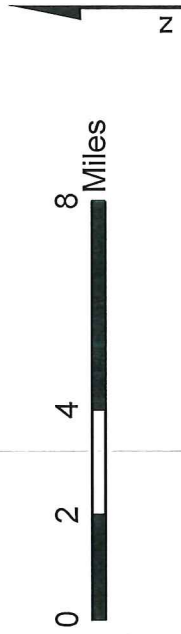
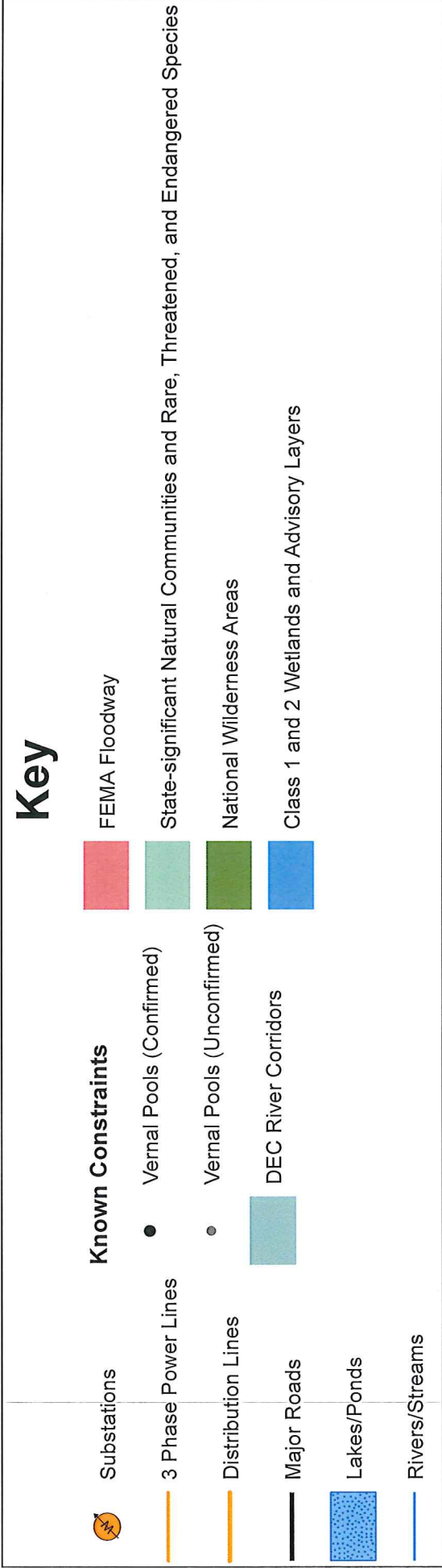
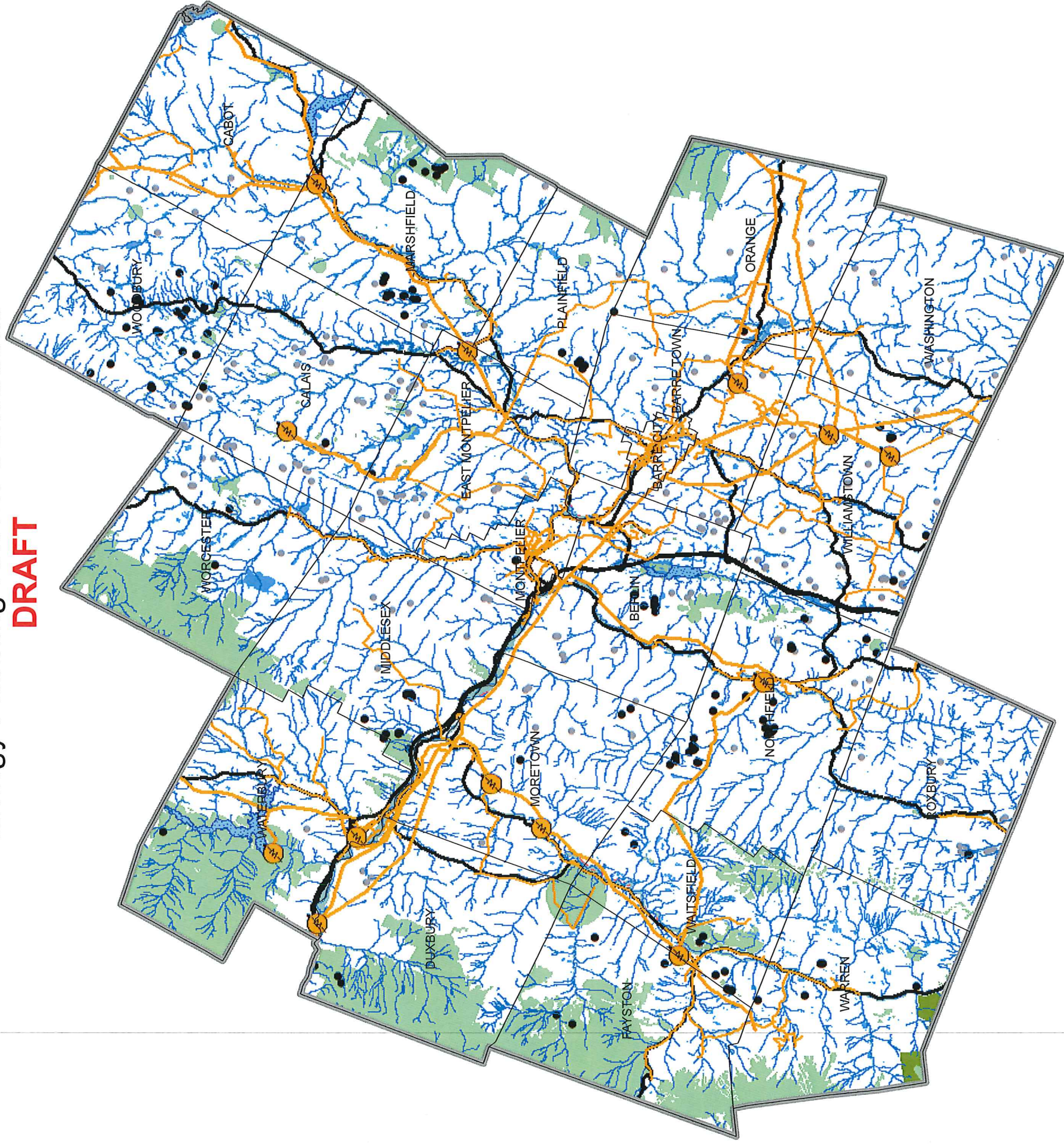
ACT 174's Energy Planning Standards state *"The mapping standards lay out a sequence of steps for planners to examine existing renewable resource and to identify potential (and preferred) areas for renewable energy developed and to identify likely unsuitable areas for development."*

Staff are following these standards, which starts on page 9, for the draft maps. A link to those standards is below:

http://publicservice.vermont.gov/sites/dps/files/documents/Pubs_Plans_Reports/Act_174/Regional%20Determination%20Standards_Final.pdf.

Central Vermont Regional Planning Commission Energy Planning Known Constraints

DRAFT



Known Constraints

These constraints signal likely, though not absolute, unsuitability for development based on statewide or local regulation or designated critical resources.

Link to Data -
<http://vcgi.vermont.gov/opendata/act174>

Known Constraints
Vernal Pools including confirmed and unconfirmed - Vermont Fish and Wildlife
DEC River Corridors - DEC WSMD Rivers Program 1/2/15
FEMA Floodway included in Zones AE - FEMA Map Service Center
State-significant Natural Communities and Rare, Threatened, and
Endangered Species - Vermont Fish and Wildlife, Natural Heritage Inventory
National Wilderness Areas - USDA Forest Service
Class 1 and Class 2 Wetlands (VSWI) and Advisory Layers - VT Watershed
Management Division

This map was created as part of a Regional Energy Planning Initiative
being conducted by the Bennington County Regional Commission,
and the Vermont Public Service Department.

Created: December 2016 by CVRPC GIS.














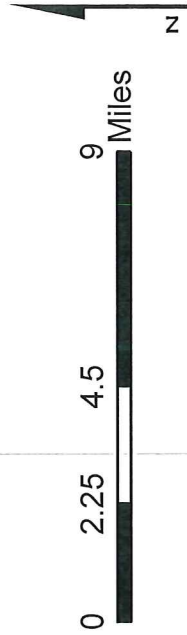
Central Vermont Regional Planning Commission Energy Planning Possible Constraints

DRAFT



Key

Possible Constraints		Vermont Conservation Design			
	Substations		Agricultural Soils		Highest Priority Forest Blocks (Connectivity)
	3 Phase Power Lines		FEMA Special Flood Hazard Areas		Highest Priority Forest Blocks (Interior)
	Distribution Lines		Protected Lands		Highest Priority Forest Blocks (Physical Landscape Diversity)
	Major Roads		ACT 250 Ag Mitigation Parcel		Hydric Soils
	Lakes/Ponds		Deer Wintering Areas		
	Rivers/Streams				



Possible Constraints

These constraints signals conditions that would likely require mitigation, and which may prove a site unsuitable after site-specific study, based on statewide or regional/local policies that are currently adopted or in effect.

Possible Constraints Data Sources

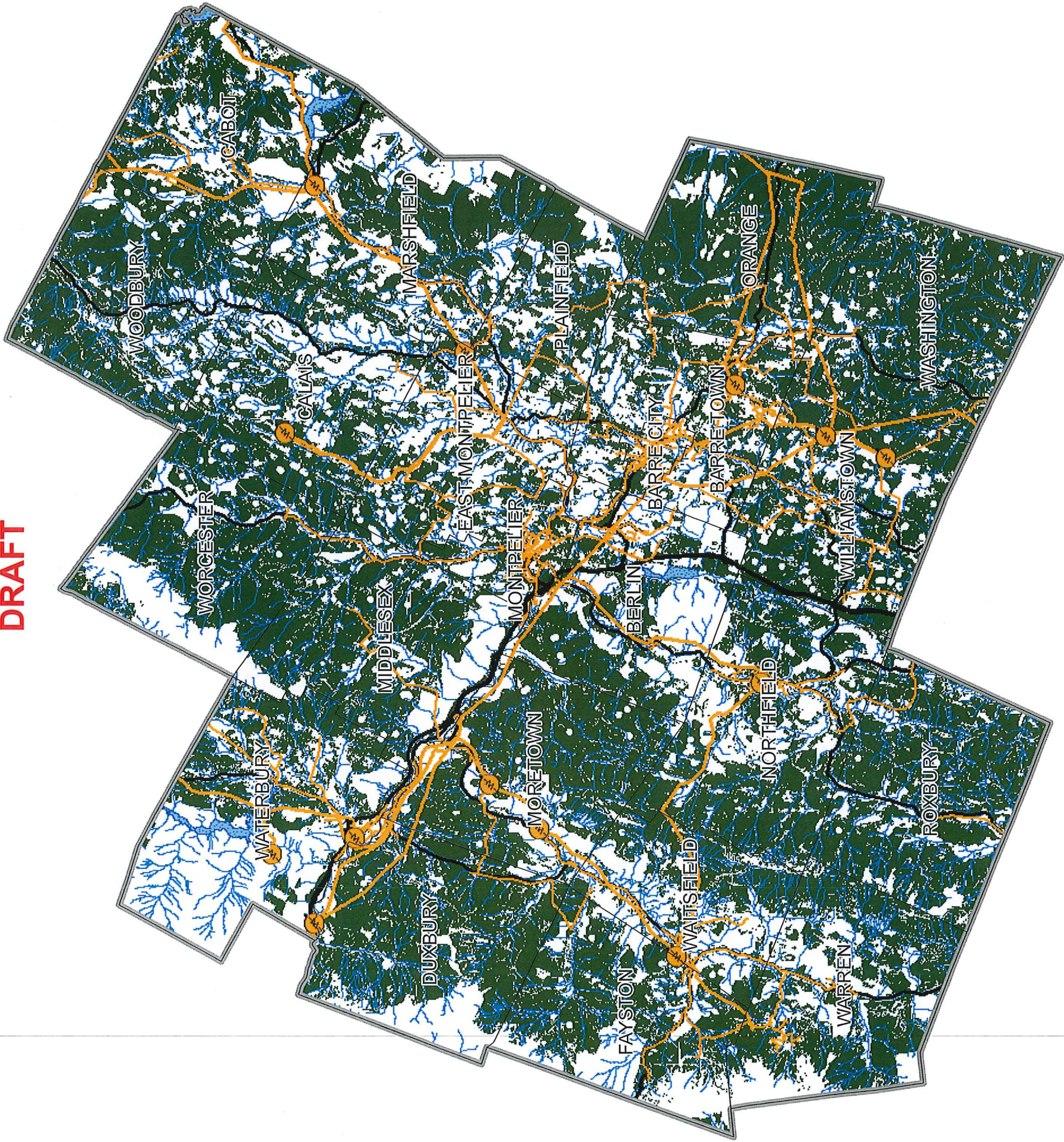
Agricultural Soils include local, prime and statewide classifications - NRCS
FEMA Special Flood Hazard Areas include Zones A and AE - FEMA
Map Service Center
Protected Lands - Include State fee lands and private conservation lands - VCGI
Act 250 Ag Mitigation Parcels include parcel as of 2006 - VT Dept. of Ag
Deer Wintering Areas - VT Fish and Wildlife
Vermont Conservation Design include the following Highest Priority Forest Blocks: Connectivity, Interior, and Physical Landscape Diversity) - VT Fish and Wildlife
Hydric Soils include soils that have hydric named components in the map unit - NRCS

This map was created as part of a Regional Energy Planning Initiative being conducted by the Bennington County Regional Commission, and the Vermont Public Service Department.

Link to Data - <http://vcgi.vermont.gov/opendata/act174>

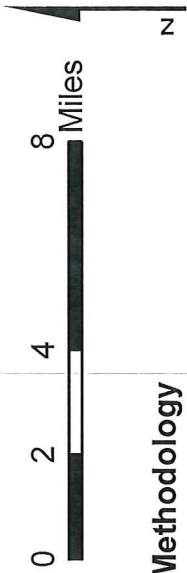
Created: December 2016 by CVRPC GIS.

Central Vermont Regional Planning Commission
Energy Planning Potential: WOODY BIOMASS
DRAFT



Key

	Substations		Major Roads		Woody Biomass
	3 Phase Power Lines		Lakes/Ponds		
	Distribution Lines		Rivers/Streams		

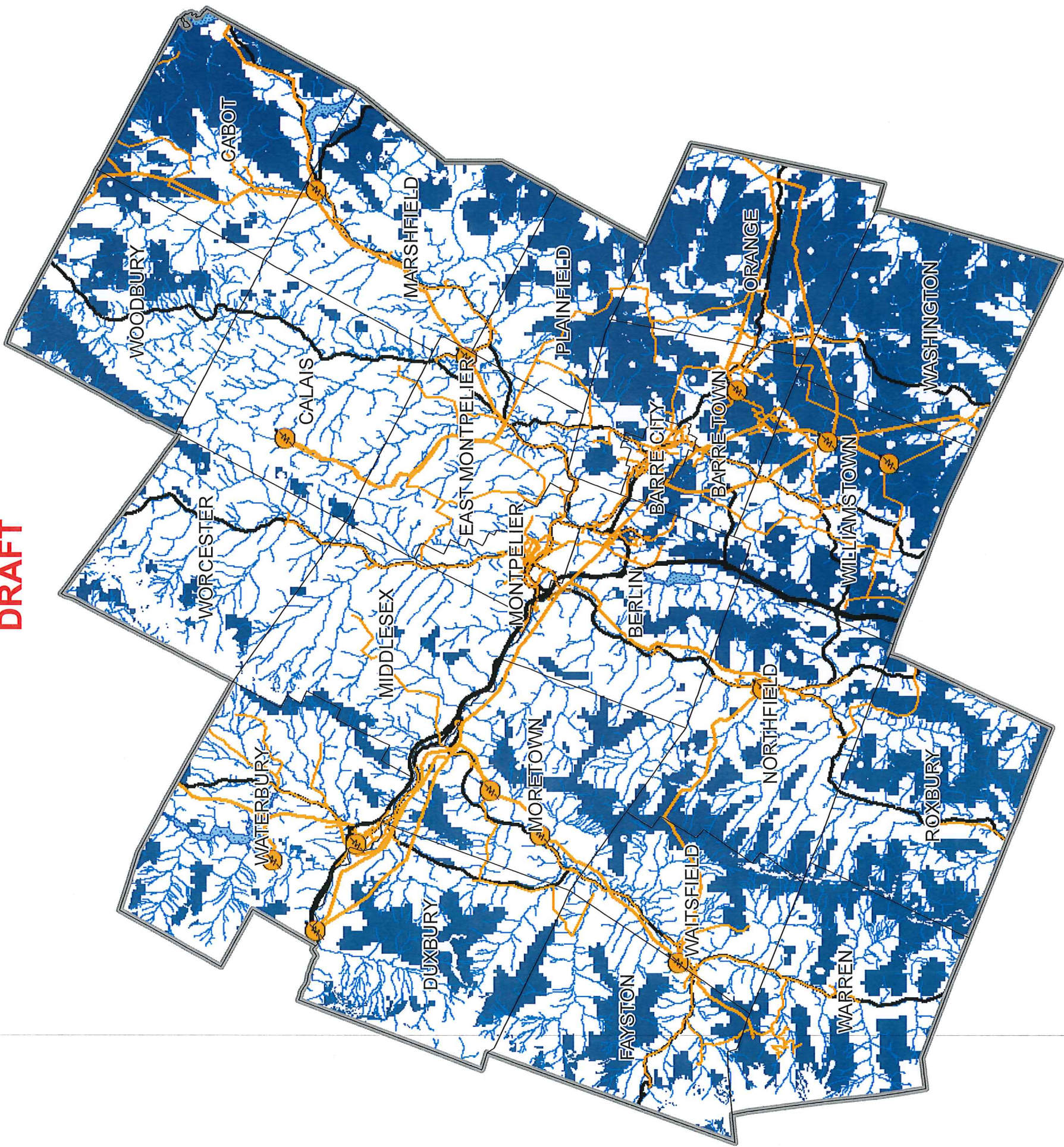


Methodology







This map shows areas of resource potential for woody biomass, i.e., locations where forested areas are. This map also considers various other conditions, such as ecological zones, that may impact the feasibility of renewable energy/alternative heating source. These conditions are referred to as constraints. This map does not include areas where other types of biomass, such as biomass from agricultural residue, could be grown/harvested.

Central Vermont Regional Planning Commission Energy Planning Potential: WIND

DRAFT



Key

	Substations		Major Roads		Wind Potential
	3 Phase Power Lines		Lakes/Ponds		Rivers/Streams
	Distribution Lines				



Methodology

This map shows areas of resource potential for renewable energy generation from wind, i.e. locations where renewable energy generation would likely be most feasible according to the natural conditions of an area. This map also considers various other conditions, such as ecological zones, that may impact the feasibility of renewable energy development. These conditions are referred to as constraints. Areas of prime wind potential exist where the natural conditions make development feasible and no constraints exist.

This map was created as part of a Regional Energy Planning Initiative being conducted by the Bennington County Regional Commission, and the Vermont Public Service Department.

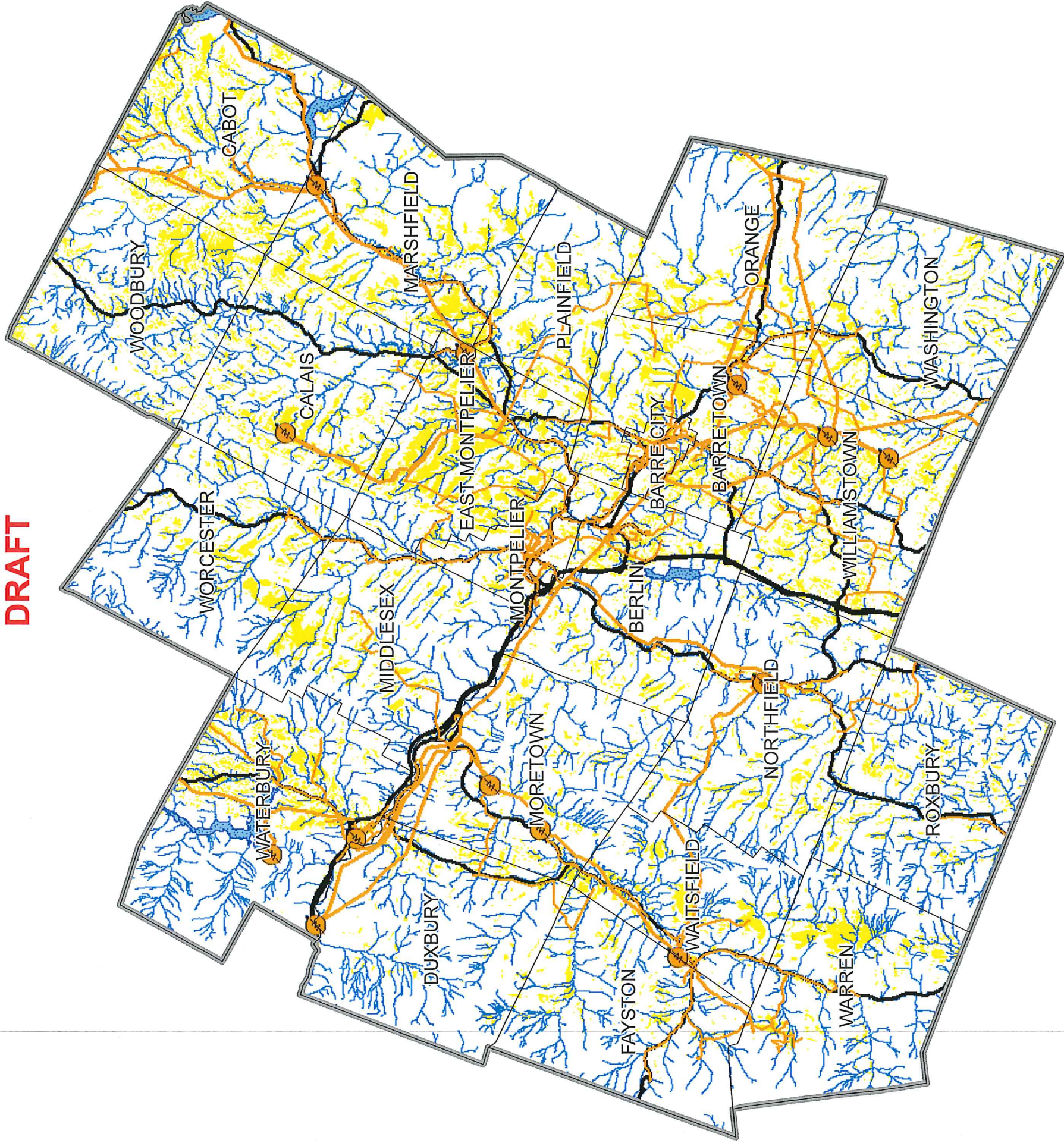
Created: December 2016 by CVRPC GIS.



Central Vermont Regional Planning Commission

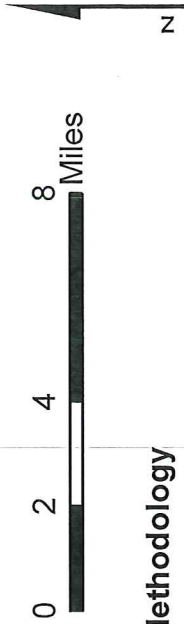
Energy Planning Potential: SOLAR

DRAFT



Key

	Substations		Major Roads		Solar Potential
	3 Phase Power Lines		Lakes/Ponds		
	Distribution Lines		Rivers/Streams		



Methodology

This map shows areas of resource potential for renewable energy generation from solar, i.e. locations where renewable energy generation would likely be most feasible according to the natural conditions of an area. This map also considers various other conditions, such as ecological zones, that may impact the feasibility of renewable energy development. These conditions are referred to as constraints. Areas of prime solar potential exist where the natural conditions make development feasible and no constraints exist.

This map was created as part of a Regional Energy Planning Initiative being conducted by the Bennington County Regional Commission, and the Vermont Public Service Department.

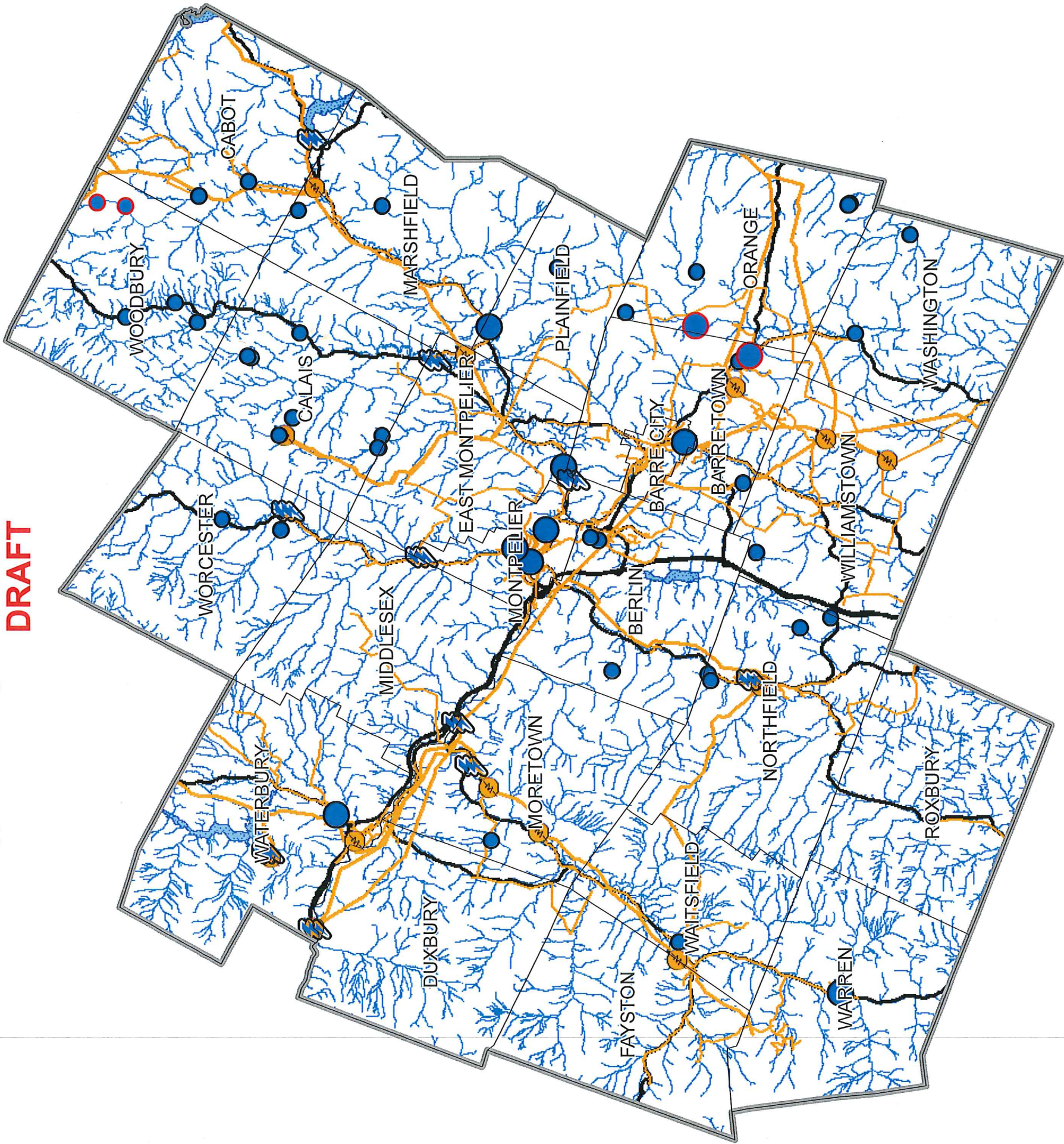
Created: December 2016 by CVRPC GIS.



Central Vermont Regional Planning Commission

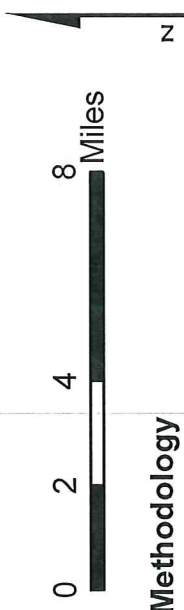
Energy Planning Potential: HYDROELECTRIC

DRAFT



Key

Operational Hydroelectric Facilities	Potential Hydroelectric Facilities
Substations	High Hazard with < 50 kW Capacity
3 Phase Power Lines	< 50 kW Capacity
Distribution Lines	High Hazard with > 50 kW Capacity
Major Roads	
Lakes/Ponds	
Rivers/Streams	



Methodology

This map shows areas of resource potential for renewable energy generation from hydroelectric, i.e., dams that could be converted in to hydroelectric facilities as well as active hydroelectric sites. Existing hydroelectric dam information was extracted from the Vermont Dam Inventory, while potential hydroelectric sites were derived from a study conducted by Community Hydro in 2007.1 Based on estimates conducted within the report, this map categorizes dams based on their potential hydroelectric generation capacity, and the downstream hazard risk that would be involved in hydroelectric production at each site.

High hazard potential dams are those where failure or mis-operation will probably cause loss of human life. The other rankings were grouped together and their failure or mis-operation results in no probable loss of human life, but could cause economic loss, environmental damage, disruption of lifeline facilities, or impact other concerns. These dams are often located in predominately rural or agricultural areas, but could be located in areas with population and significant infrastructure.

This map was created as part of a Regional Energy Planning Initiative being conducted by the Bennington County Regional Commission and the Vermont Public Service Department.

Created: December 2016 by CVRPC GIS.





Central Vermont Regional Planning Commission

Resolution on Complying with Vermont Open Meeting Law (1 V.S.A. § 312)

Whereas the Central Vermont Regional Planning Commission is a public body created in 1967 by the 20 municipalities in Washington County and the Towns of Orange, Washington, and Williamstown in Orange County and is, therefore, subject to Vermont Open Meeting Law; and

Whereas that Law requires that the time and place of all regular meetings subject to Vermont Open Meeting Law shall be clearly designated by statute, charter, regulation, ordinance, bylaw, resolution, or other determining authority of the public body; now, therefore, be it

Resolved, that the Central Vermont Regional Planning Commission (CVRPC):

1. Adopts the time and location of the CVRPC Board of Commissioner regular meeting as the second Tuesday of the month, 7:00 pm, at the Central Vermont Chamber of Commerce, 33 Stewart Road, Berlin, Vermont;
2. adopts the following times and locations for regular meeting of its committees:
 - a. Executive Committee: the Monday one week prior to the Board of Commissioners meeting, 4:00 pm, at the CVRPC office, 29 Main Street, Suite 4, Montpelier, Vermont;
 - b. Project Review Committee: as needed, the first or 4th Thursday of the month, 4:00 pm, at the CVRPC office, 29 Main Street, Suite 4, Montpelier, Vermont;
 - c. Town Plan Review Committee: as needed, the first Thursday of the month, 4:00 pm, at the CVRPC office, 29 Main Street, Suite 4, Montpelier, Vermont;
 - d. Transportation Advisory Committee: the fourth Tuesday of the month, 7:00 pm, at the CVRPC office, 29 Main Street, Suite 4, Montpelier, Vermont; and
 - e. Brownfields Advisory Committee: the third Monday of the month, 4:00 pm, at the CVRPC office, 29 Main Street, Suite 4, Montpelier, Vermont; and

3. names the following locations for posting of meeting notices and agendas:
- a. CVRPC website: www.centralvtplanning.org;
 - b. CVPRC office, 29 Main Street, Suite 4, Montpelier, Vermont;
 - c. Waterbury Municipal Offices, 28 North Main Street, Waterbury, Vermont; and
 - d. Barre City Hall, 6 North Main Street, Barre, Vermont.

Adopted by the Board of Commissioners: 12 / 13 / 2016

Byron Atwood, Chair
CVRPC Board of Commissioners

14 Seminary Street
Middlebury, VT 05753

Tel (802) 388-314
FAX (802) 388-0031

INFORMATIONAL
ONLY

December 1, 2016

Tim Lueders-Dumont
Policy Director
Office of the State Treasurer
109 State Street, 4th Floor
Montpelier, VT 05609-6901

RE: Long-Term Water Quality Funding Recommendations

Dear Tim,

Thank you and team in the State Treasurer's Office, Department of Environmental Conservation, Tax Department, and the Administration on your efforts to develop sustainable revenue to implement the water quality requirements statewide. Please consider the following comments on behalf of VAPDA as the State Treasurer develops her recommendations to the Legislature.

- It is important that this conversation have a state-wide perspective and not just focus on Lake Champlain.
- There are significant funding gaps for municipalities and other regulated entities to achieve compliance. These compliance efforts will be most assisted by meeting a significant portion of the cost through statewide revenues. For municipalities, it would be helpful, as with many other funding programs like transportation, if the State could invest 80% in these efforts. This will allow for equal revenue raising statewide and decrease the amount of inequity amongst municipalities participating in raising sufficient revenue to implement what needs to be done.
- Raising the majority of needed funding statewide will allow the State to best manage investments that have the "biggest bang for the buck." This is important to most cost effectively meet our Clean Water objectives.
- Please keep in mind that any municipal costs that are not covered by the State will still be borne by taxpayers at the municipal level, but probably in very unequal ways as some towns move fully ahead and some lag behind.
- Most of these same issues apply to farmers and large landowners as we work to protect the unique landscape qualities of Vermont.
- While we haven't had full deliberation on the individual potential revenues, we see the value in all property owners participating in this effort and in additional revenues that come from users.

Thank you very much for your consideration.

Best regards,



Charlie Baker
Natural Resource Committee Chair

Strengthening the capability of governments...