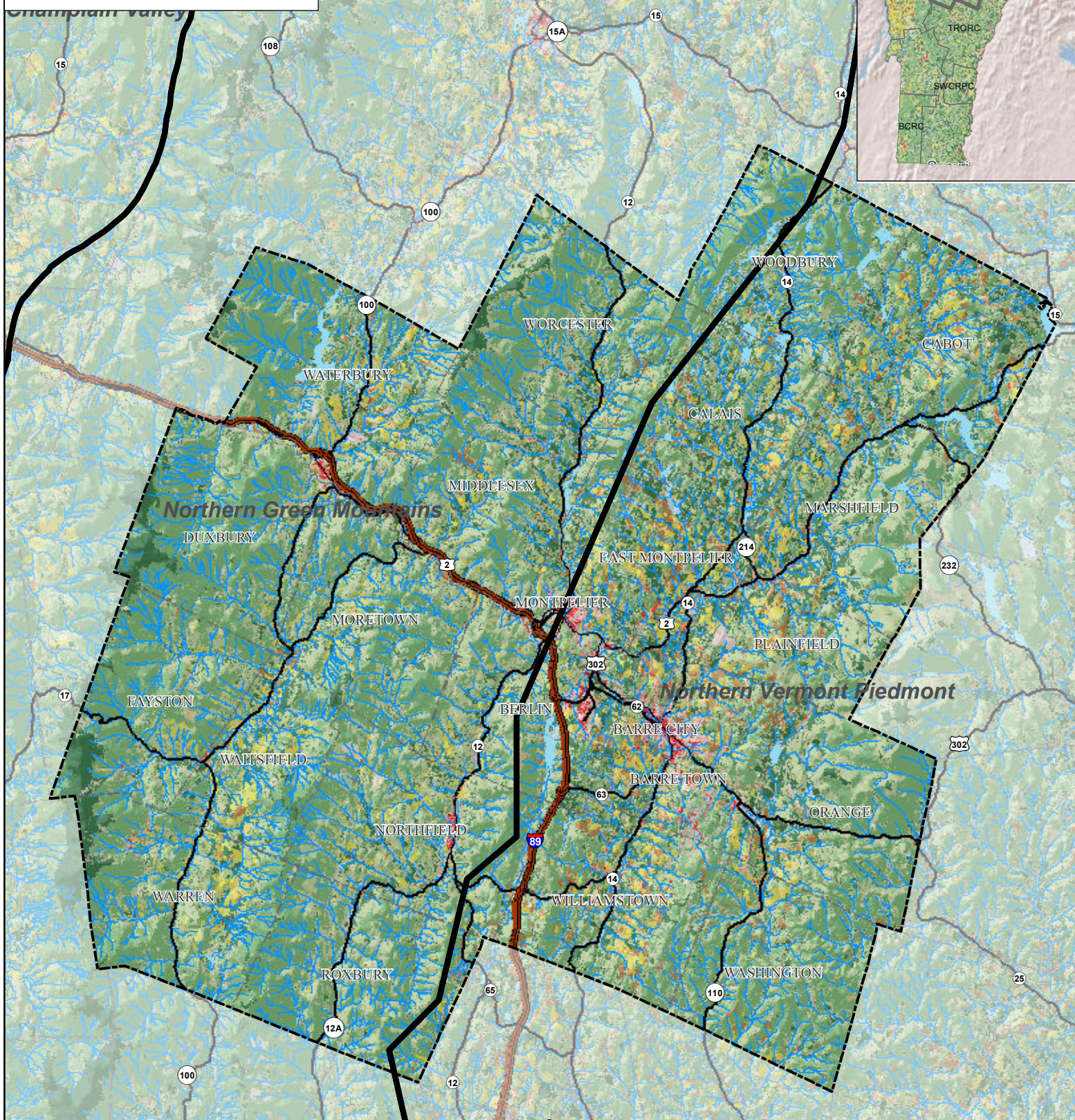


# Forest Stewardship

Central Vermont Region

## Biophysical Regions with Land Cover



### Land Cover

- Open Water
- Developed, Open Space
- Developed, Low Intensity
- Developed, Medium Intensity
- Developed, High Intensity

### Barren Land

- Deciduous Forest
- Evergreen Forest
- Mixed Forest
- Shrub/Scrub
- Grassland/Herbaceous

### Pasture Hay

- Cultivated Crops
- Woody Wetlands
- Emergent Herbaceous Wetlands
- Biophysical Region

### DATA SOURCES:

LAND COVER: USGS, 2006.  
BIOPHYSICAL REGIONS: Vermont Biodiversity  
Project, UVM Spatial Analysis Lab, 2000.

0 2 4 6 8 10 Miles

N