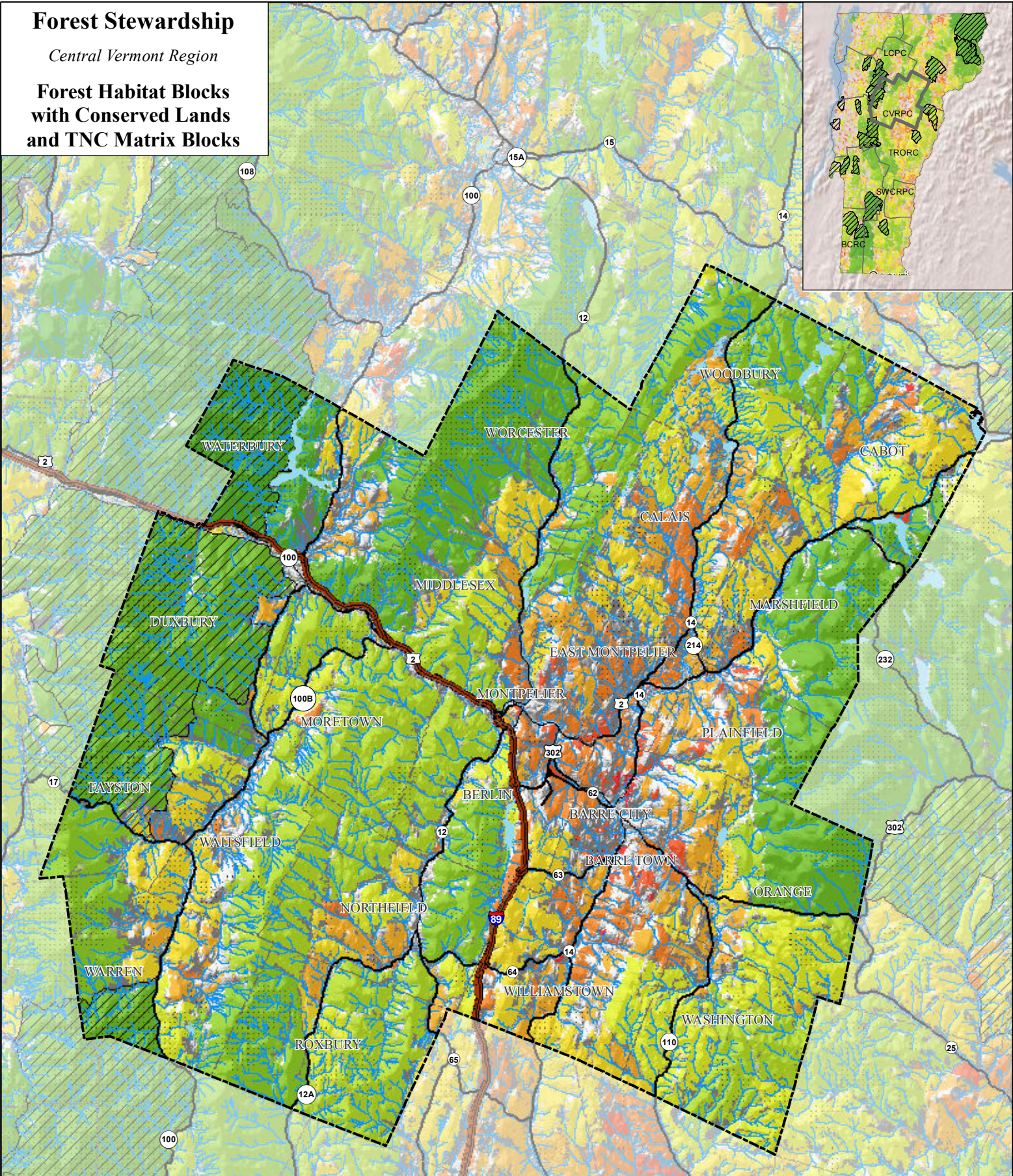


Forest Stewardship

Central Vermont Region

Forest Habitat Blocks with Conserved Lands and TNC Matrix Blocks



Priority Forest Blocks

- High Rank
- Medium Rank
- Low Rank

- TNC Matrix Blocks
- Conserved Lands

0 2 4 6 8 10 Miles



DATA SOURCES:

CONSERVED LANDS: Jon Osborne, Vermont Land Trust, 2009, from Vermont Department of Forests, Parks and Recreation.

HABITAT BLOCKS and TNC MATRIX BLOCKS: Jens Hilke, Vermont Department of Fish and Wildlife; Eric Sorenson, Vermont Agency of Natural Resources; Jon Osborne, Vermont Land Trust. Quality ranking based on several weighted factors including cost distance to core areas, ELU weighted acreage, element occurrence count, percent core, block size, road density, percent ponds, percent wetlands, exemplary aquatic features, density of rivers and streams, and percent of block within a TNC matrix block.