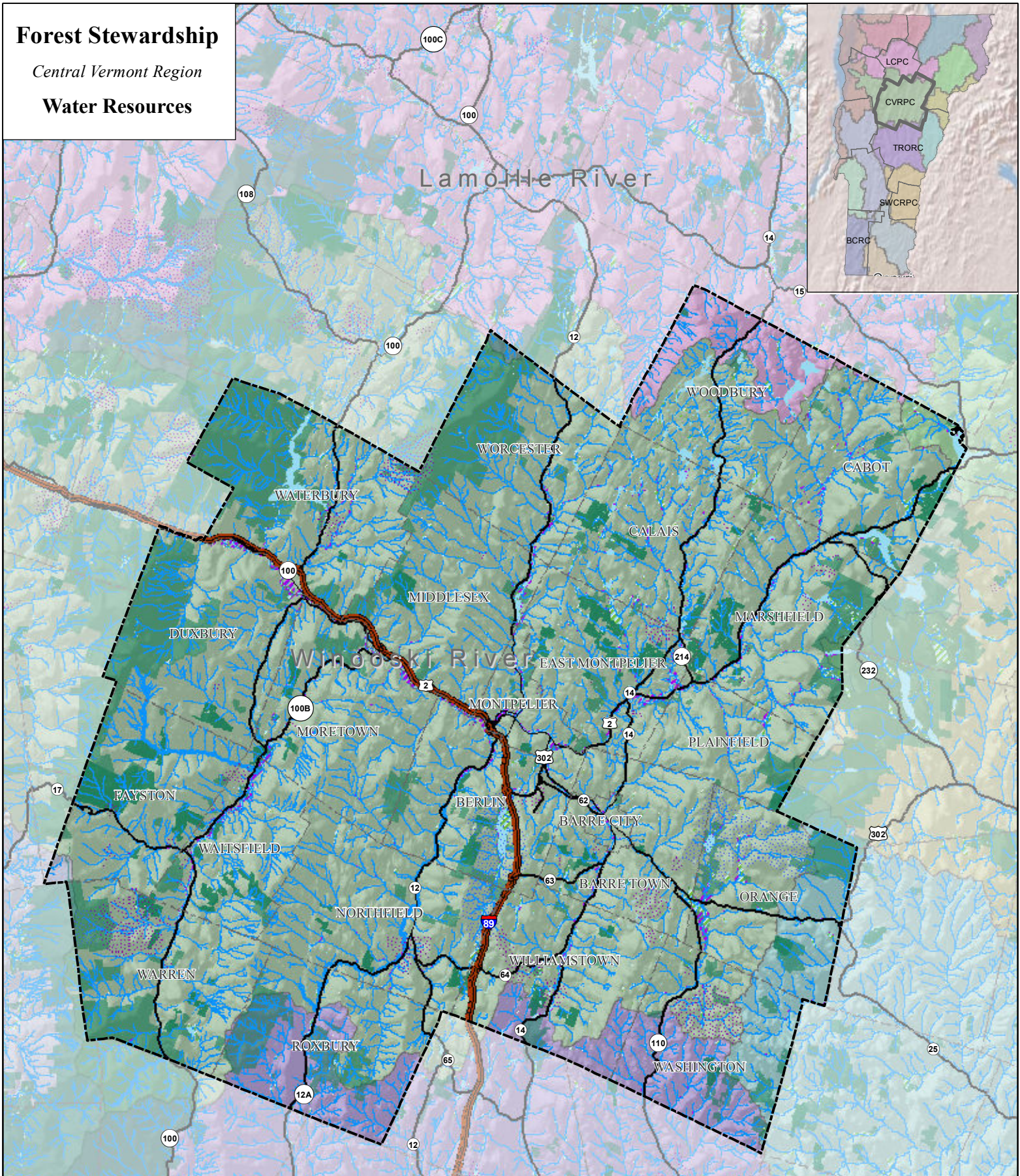


# Forest Stewardship

Central Vermont Region

## Water Resources



- Groundwater Source Protection Area
- Surface Water Source Protection Area
- Priority Aquatic Features**
- Streams
- Lakes/Ponds
- Wetlands
- Flood and fluvial erosion hazard area
- Conserved Lands

- Major Watersheds**
- Connecticut-Johns River to Waits River. New Hampshire, Vermont.
  - Connecticut-Waits River to White River. New Hampshire, Vermont.
  - Lamoille River
  - Otter Creek
  - Passumpsic. Vermont.
  - White River
  - Winooski River

**DATA SOURCES:**  
**PRIORITY AQUATIC FEATURES:** Vermont Department of Fish and Wildlife.  
**SOURCE PROTECTION AREAS:** Vermont Department of Environmental Conservation, Water Quality Division, 2010.  
**FLOOD HAZARD AREAS:** Digitized from FEMA Flood Insurance Rate Maps. DEC, Water Quality Division, 1983.  
**FLUVIAL EROSION HAZARD AREAS:** VT ANR River Management, 2010.  
**CONSERVED LANDS:** University of Vermont Spatial Analysis Laboratory.

