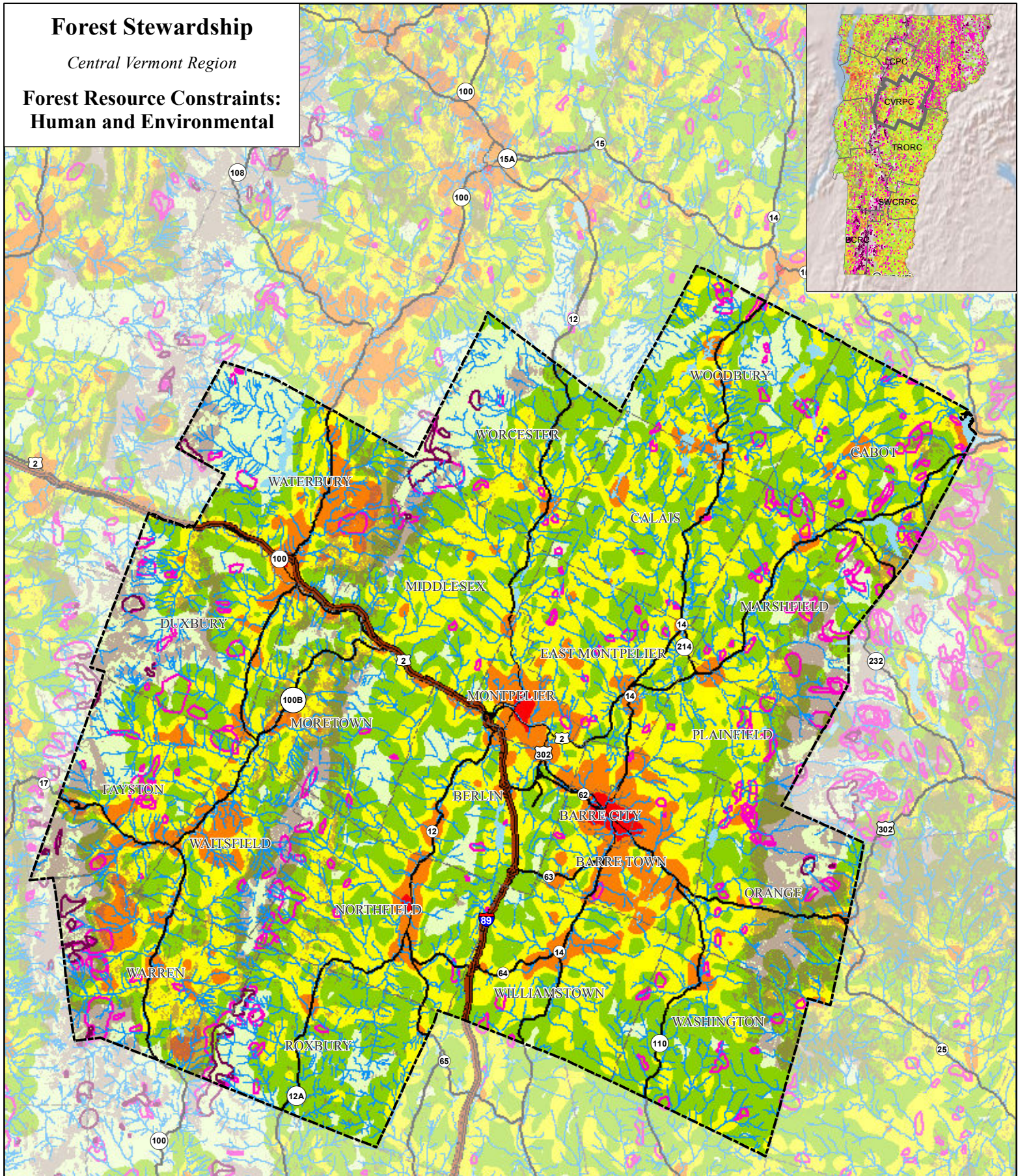


Forest Stewardship

Central Vermont Region

Forest Resource Constraints: Human and Environmental



Areas of Forest Decline
 Declines Above 2500'
 All Declines
 High Sensitivity
 to Acid Deposition

Housing Density
 Undeveloped (0 units/acre)
 Rural (0 - 0.025 units/acre)
 Exurban (0.025 - 0.1 units/acre)
 Suburban (0.1 - 1 units/acre)
 Urban (1+ units/acre)

DATA SOURCES:

SENSITIVITY TO DEPOSITION: Engstrom & Wilmot, VANR, 2010; Eric Miller, Ecosystems-Research, Inc., 2005; from Vermont Department of Parks, Forests and Recreation, 2010.

AREAS OF FOREST DECLINE: Engstrom, ANR, 2010; Barbara Burns, ANR, 2008; from Vermont Department of Parks, Forests and Recreation, 2010.

HOUSING DENSITY: Kevin Behm, ACRPC, 2011.

0 2 4 6 8 10 Miles

N