



Shaping
Our Region
From the Ground Up



The Central Vermont Regional Planning Commission (CVRPC)

began to update the Regional Plan during the fall of 2013. The 2016 Regional Plan, Plan Central Vermont, will address a variety of relevant topics, challenges, and trends in order to build a more resilient and engaged region. In addition to data gathering, CVRPC anticipates involving a broad and diverse population in the development of a long term vision for Central Vermont, as well as in the identification of goals and priorities for each topic area for implementation. Your participation in the process will provide valuable input to ensure that a wide variety of opinions are included in the development of the Regional Plan. CVRPC will be utilizing traditional and non-traditional methods to share and gather information from all populations. Methods will incorporate a variety of different activities, including community gatherings, surveys, service-learning projects in partnerships with local schools, and more. The end result will be an engaged, more sustainable Central Vermont region with a plan that continues to put economic and natural resource health on the same footing as transportation and land use. Please e-mail smith@cvregion.com if you're interested in joining one of our working groups!

What topics will the Regional Plan cover?

- Economic Development
- Environment and Natural Resources
- Safe and Affordable Housing
- Energy
- Utilities and Facilities
- History and Culture
- Community
- Health
- Transportation
- Land Use

Working Groups

- Public Outreach and Engagement
- Strong and Diverse Economy
- Environment and Natural Resources
- Safe and Affordable Housing
- Energy Efficiency and Development
- Community Resources, Utilities, and Facilities
- Transportation

The **vision** for the future of Central Vermont is to be a place that reflects the best of what the Green Mountain state has to offer—

- a place where opportunity and commerce thrive and residents innovate, using their land, skills, knowledge and strong work ethic to be prosperous;
- a place where all residents are healthy and connected to their community because their surroundings and transportation systems encourage interaction, recreation and access to housing, services and jobs; and
- a place where the strong connection between the health of our natural environment and our quality of life is grounded in our ethic and reflected by our ability to use energy efficiently, grow sustainably, and adapt our built environment for resilience in a changing landscape.



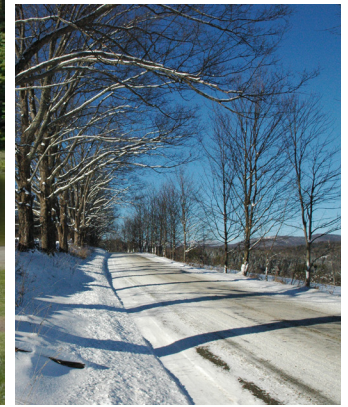
Central Vermont Regional Planning Commission

29 Main Street Suite 4 | Montpelier, VT 05602

802-229-0389 | CVRCP@cvregion.com | www.centralvtplanning.org



**Get involved
in the future
of your region!**



Guiding Principles

This plan will be designed to create or preserve the following:

- A strong culture of cooperative planning with residents working together to find solutions to sustaining the vitality of our communities and high quality of life enjoyed in our Region;
- A prosperous and adaptable economy that will provide full employment in a broad range of occupations at a livable wage;
- Preservation of an economically viable working landscape of farms and forests, with increased local food production and access to healthy food;
- Well-protected natural systems and sustainably managed natural resources including wildlife, habitat and water resources;
- Minimized contribution to climate change and preparedness for the challenges and opportunities of a changing climate and increased natural hazards;
- A good range of housing choices that are high quality, safe and attractive, including varying housing types offered and ample affordable options available for all residents;
- Availability of reliable and affordable energy supplies, increased energy efficiency, and diverse renewable energy resources and facilities;
- Preservation of rural character and diverse historic settlements with thriving downtown and village centers serving as cultural and economic hubs;
- Reduced solid waste and cost-effective infrastructure that supports desired growth patterns, public health and environmental sustainability;
- A healthy, active and connected population in communities that work for all residents;
- An integrated, regional transportation system that encourages various modes of travel.

Why do we plan regionally?

By planning regionally, we can align economic, social and environmental issues in order to guide investments to meet the future needs of the Region's residents. This plan is intended to provide a framework to address issues interrelated to **HOW WE CONNECT** to our communities; **HOW WE STEWARD** our natural, cultural and historic resources; **HOW WE WORK** and build on our Region's assets to create a prosperous economy; and **HOW WE GROW** as a region.

It aims to be a useful part of the ongoing dialogue about the future of our communities and to stimulate informed and collaborative actions based on collective goals and priorities.

Stay in the loop!

Visit our website:

www.plancentralvermont.org

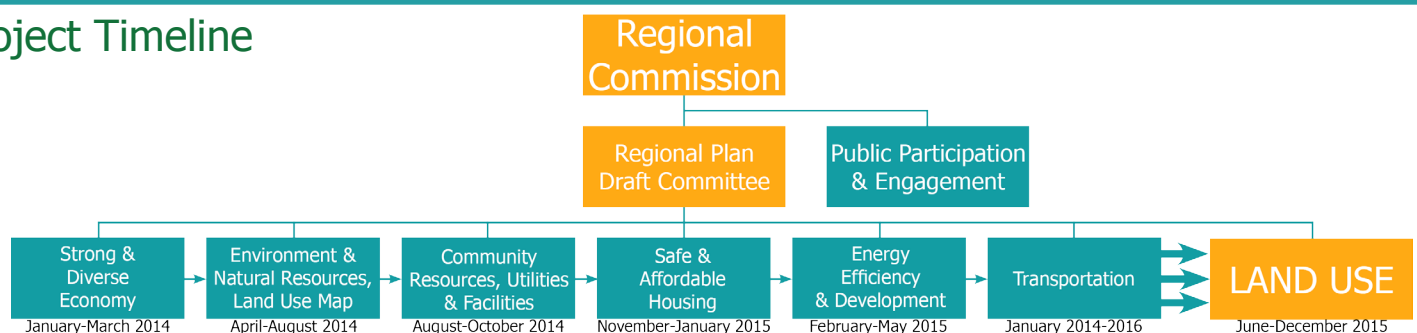
Comment on the Community Input Map:

www.plancentralvermont.org/participate/community-input-map/

Like us on Facebook: **Central Vermont Regional Planning Commission**

Follow us on Twitter: **@CentralVTPlan**

Project Timeline



For more information, please visit WWW.PLANCENTRALVERMONT.ORG.