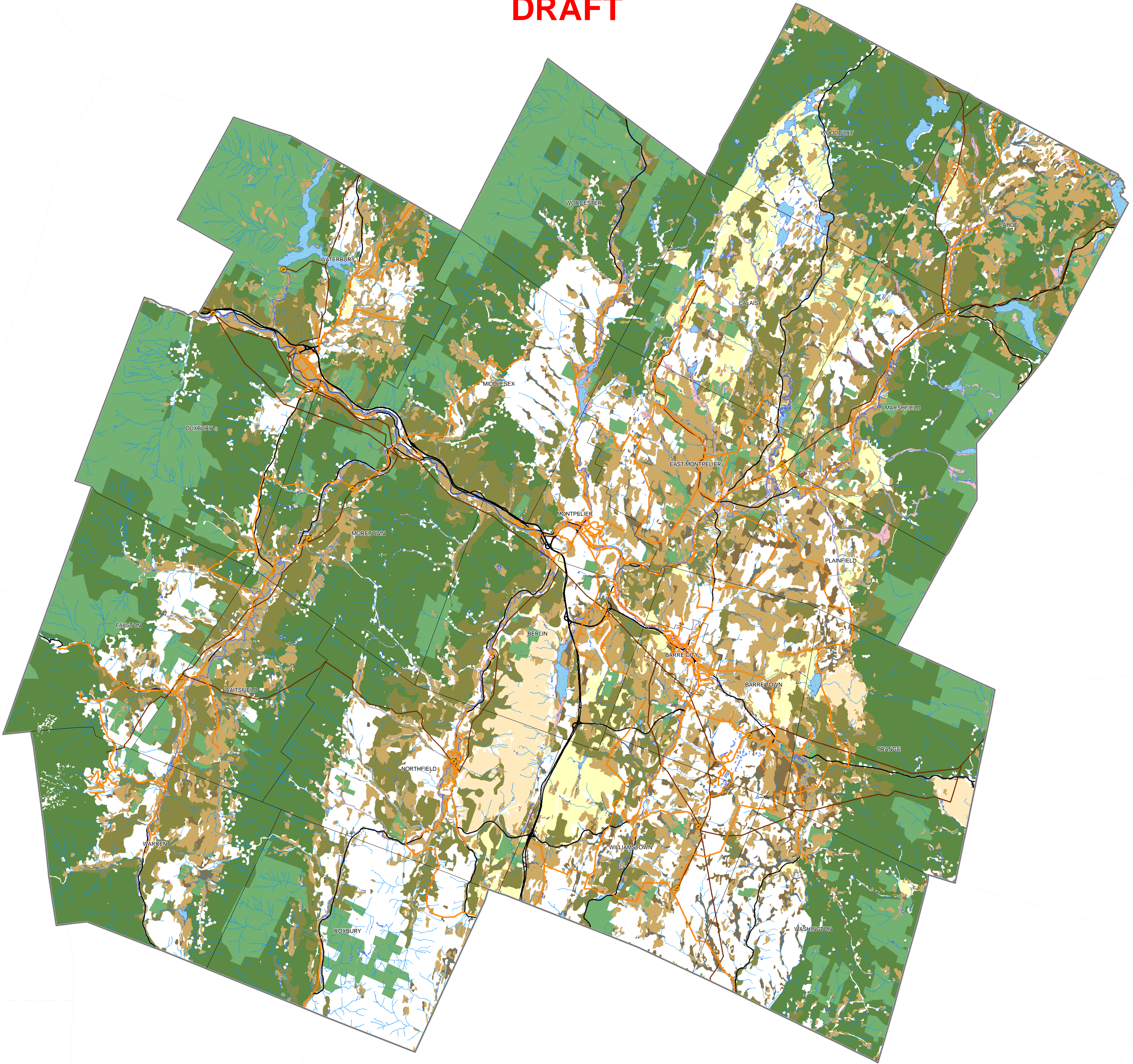


# Central Vermont Regional Planning Commission

## Energy Planning Possible Constraints

### DRAFT



#### Possible Constraints

These constraints signals conditions that would likely require mitigation, and which may prove a site unsuitable after site-specific study, based on statewide or regional/local policies that are currently adopted or in effect.

Link to Data - <http://vcgi.vermont.gov/opendata/act174>

### Key

Substations

3 Phase Power Lines

Transmission Lines

Major Roads

Lakes/Ponds

Rivers/Streams

#### Possible Constraints

Agricultural Soils

FEMA Special Flood Hazard Areas

Protected Lands

ACT 250 Ag Mitigation Parcel

Deer Wintering Areas

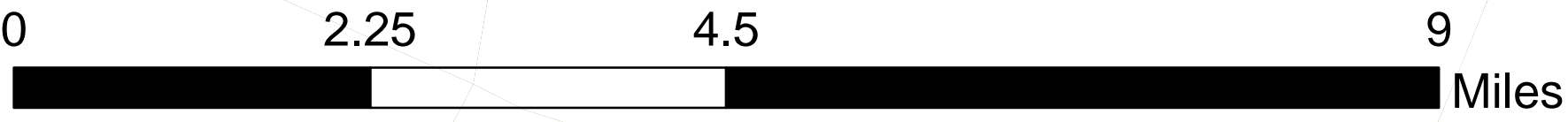
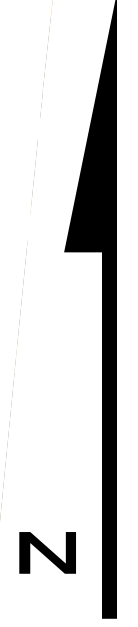
#### Vermont Conservation Design

Highest Priority Forest Blocks (Connectivity)

Highest Priority Forest Blocks (Interior)

Highest Priority Forest Blocks (Physical Landscape Diversity)

Hydric Soils



Possible Constraints Data Sources  
Agricultural Soils include local, prime and statewide classifications - NRCS  
FEMA Special Flood Hazard Areas include Zones A and AE - FEMA Map Service Center  
Protected Lands - Include State fee lands and private conservation lands - VCGLI  
Act 250 Ag Mitigation Parcels include parcel as of 2006 - VT Dept. of Ag  
Deer Wintering Areas - VT Fish and Wildlife  
Vermont Conservation Design include the following Highest Priority Forest Blocks: Connectivity, Interior, and Physical Landscape Diversity) - VT Fish and Wildlife  
Hydric Soils include soils that have hydric named components in the map unit - NRCS

This map was created as part of a Regional Energy Planning Initiative being conducted by the Bennington County Regional Commission, and the Vermont Public Service Department.

Created: December 2016 by CVRPC GIS.

