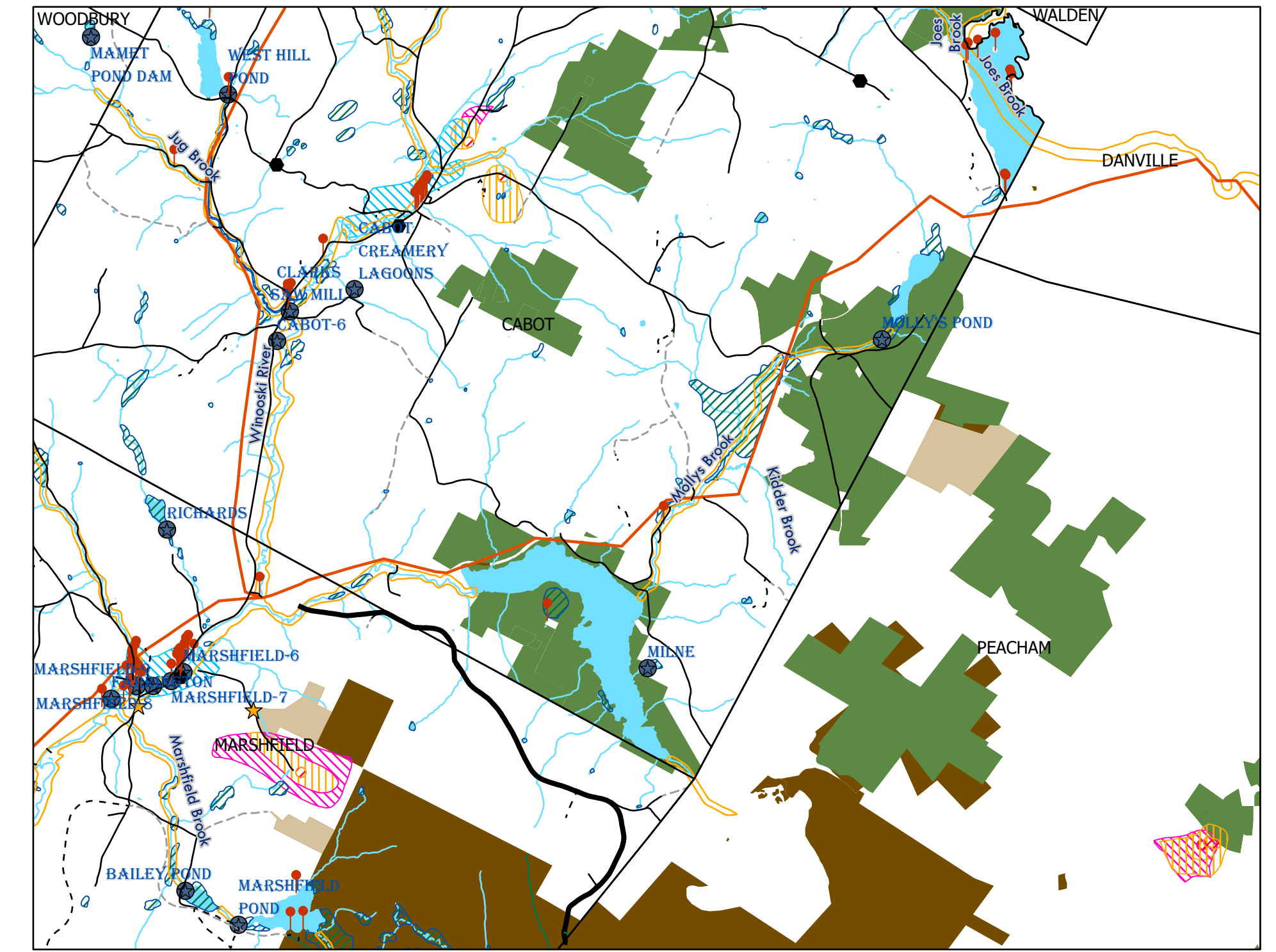
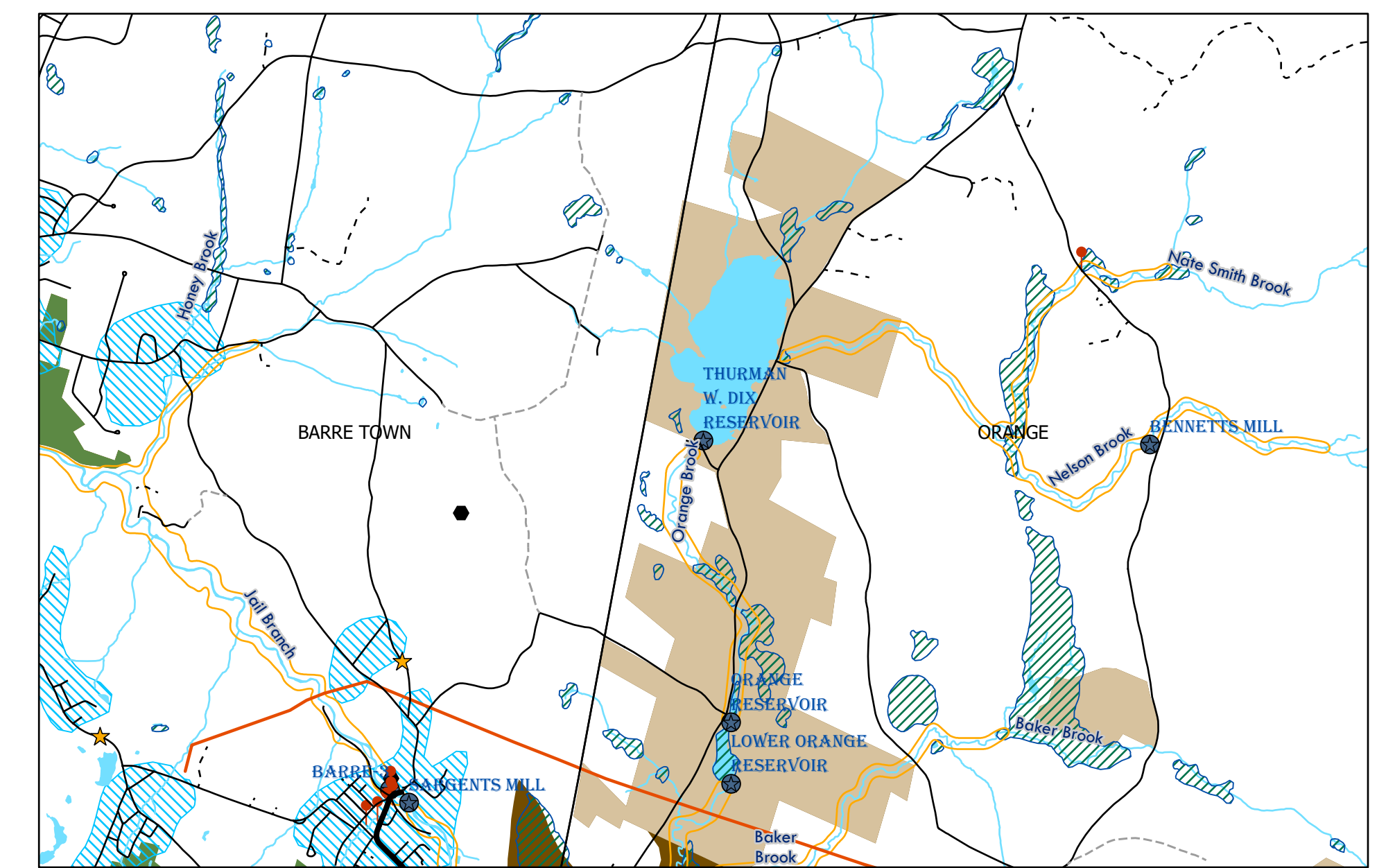


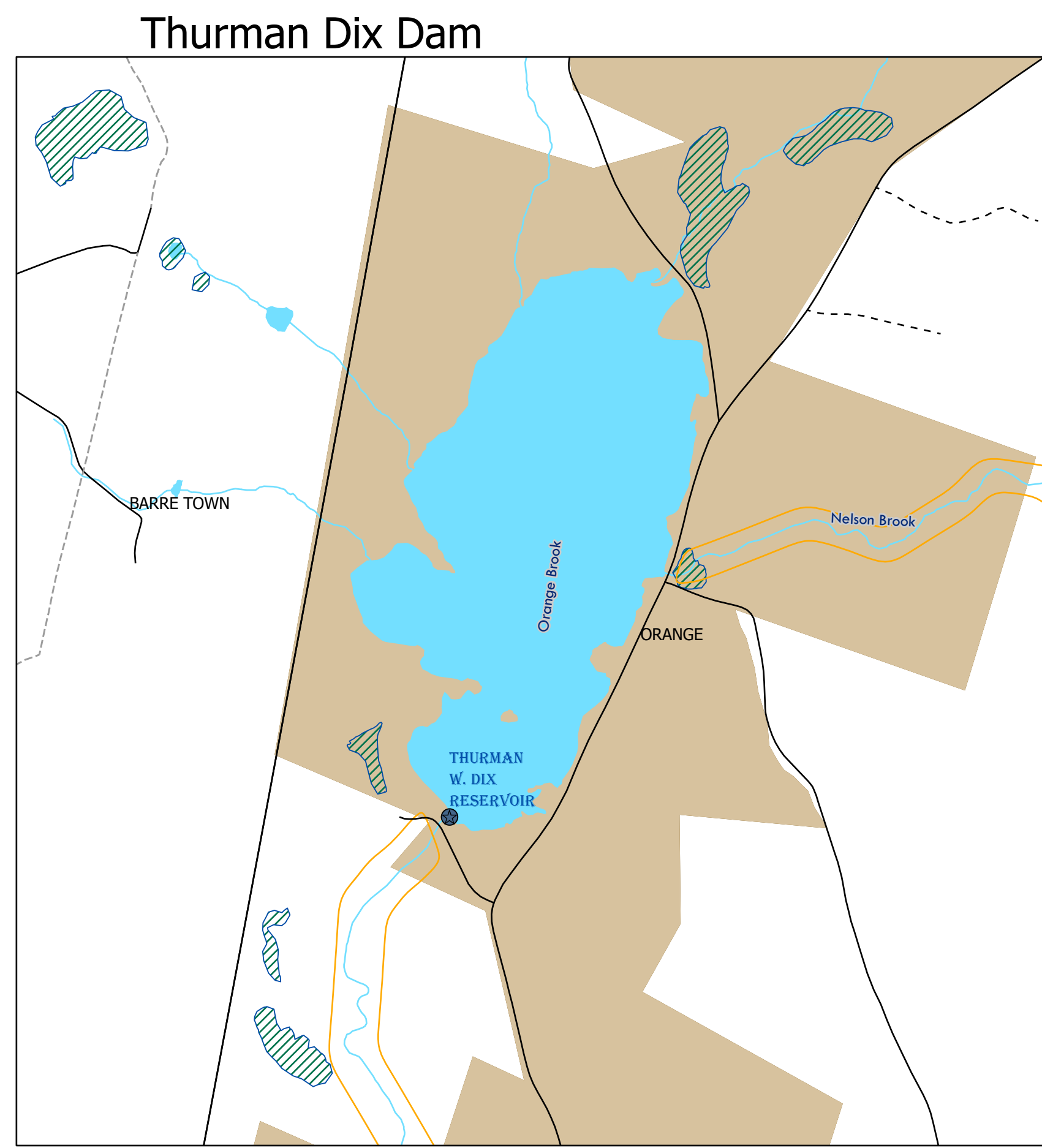
City of Montpelier Areas of Concern Map 2021



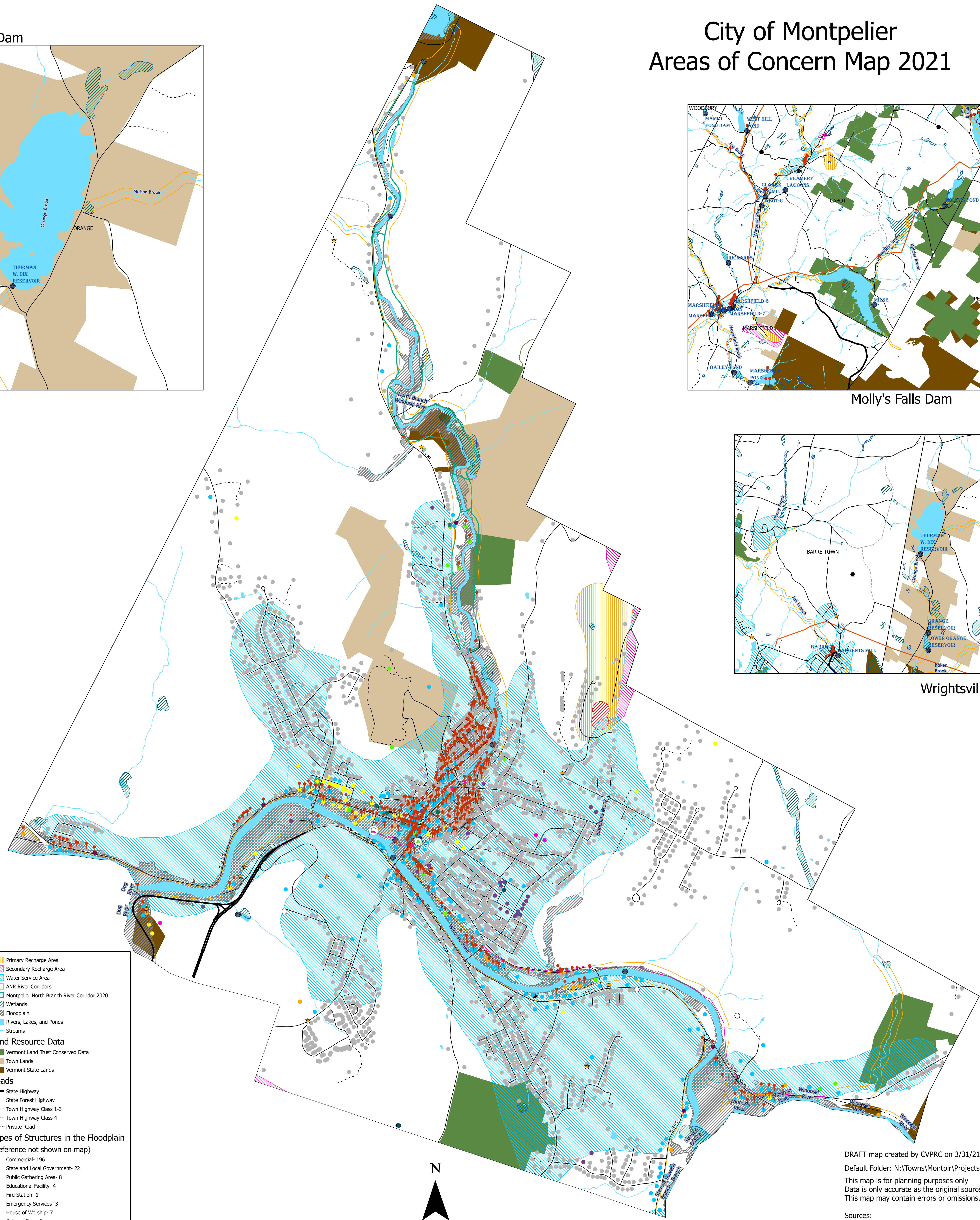
Molly's Falls Dam



Wrightsville Dam



Thurman Dix Dam



Infrastructure

- Electric Transmission Lines
- Confirmed Solar Sites
- Municipal Hydrant (Pressurized)
- Dry Hydrant (Unpressurized)
- Bike Path
- Dams
- Tier II Facility
- Structures in the Flood Plain

Building Type

- Utilities
- Commercial
- State and Local Government
- Public Gathering Area
- Educational Facility
- Fire Station
- Emergency Services
- House of Worship
- Cultural Sites
- Power Generation Site
- Landfill/ Transfer Station
- Law Enforcement
- Residential
- Public Water Supply Area
- Industrial
- Cemetery
- Communication Tower
- Communication
- Montpelier Transit Center
- Emergency Shelter

Water Resource Data

- Wellhead Protection Areas
- Isolation Zone

Land Resource Data

- Primary Recharge Area
- Secondary Recharge Area
- Water Service Area
- ANR River Corridors
- Montpelier North Branch River Corridor 2020
- Wetlands
- Floodplain
- Rivers, Lakes, and Ponds
- Streams
- Vermont Land Trust Conserved Data
- Town Lands
- Vermont State Lands

Roads

- State Highway
- State Forest Highway
- Town Highway Class 1-3
- Town Highway Class 4
- Private Road

Types of Structures in the Floodplain
(Reference not shown on map)

- Commercial- 196
- State and Local Government- 22
- Public Gathering Area- 8
- Educational Facility- 4
- Fire Station- 1
- Emergency Services- 3
- House of Worship- 7
- Cultural Sites- 2
- Law Enforcement- 1
- Residential- 251
- Public Water Supply Area- 4
- Industrial- 8

DRAFT map created by CVPRC on 3/31/21
 Default Folder: N:\Towns\Montplr\Projects 2021\Montpelier LHMP Maps
 This map is for planning purposes only
 Data is only accurate as the original sources.
 This map may contain errors or omissions.

Sources:
 Structures in the Flood Plain: E911 and CVPRC 2019
 Utility Lines: VCGI
 Building Locations: E911 2019
 Fire Hydrant Data: E911 2020
 Tier II Facilities: CVPRC 2020
 Dam, Floodplains, and River Corridors: ANR