

A serene landscape featuring a calm lake that perfectly reflects the surrounding forested hills. The sky is a soft, hazy blue, and the overall scene is peaceful and natural. The text is centered over the middle of the image.

# Lake Wise Assessment on Sabin Pond and Forest Lake

# 2024 Lake Wise Assessments



- Woodbury Lake also known as Sabin Pond
- Forest Lake also known as Nelson Pond
- June- August 2024
- The assessment will be completed by trained professionals of Fluid State Consulting and Just Water Consulting

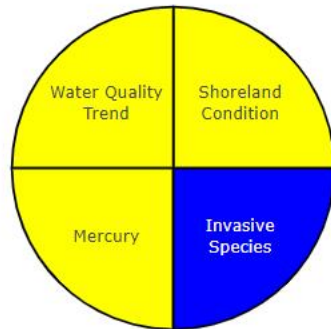


# Sabin Pond (Woodbury Lake)



## Vermont Lake Score Card Sabin Pond (Woodbury Lake)

- Scores
- Water Quality Data
- Lake Information



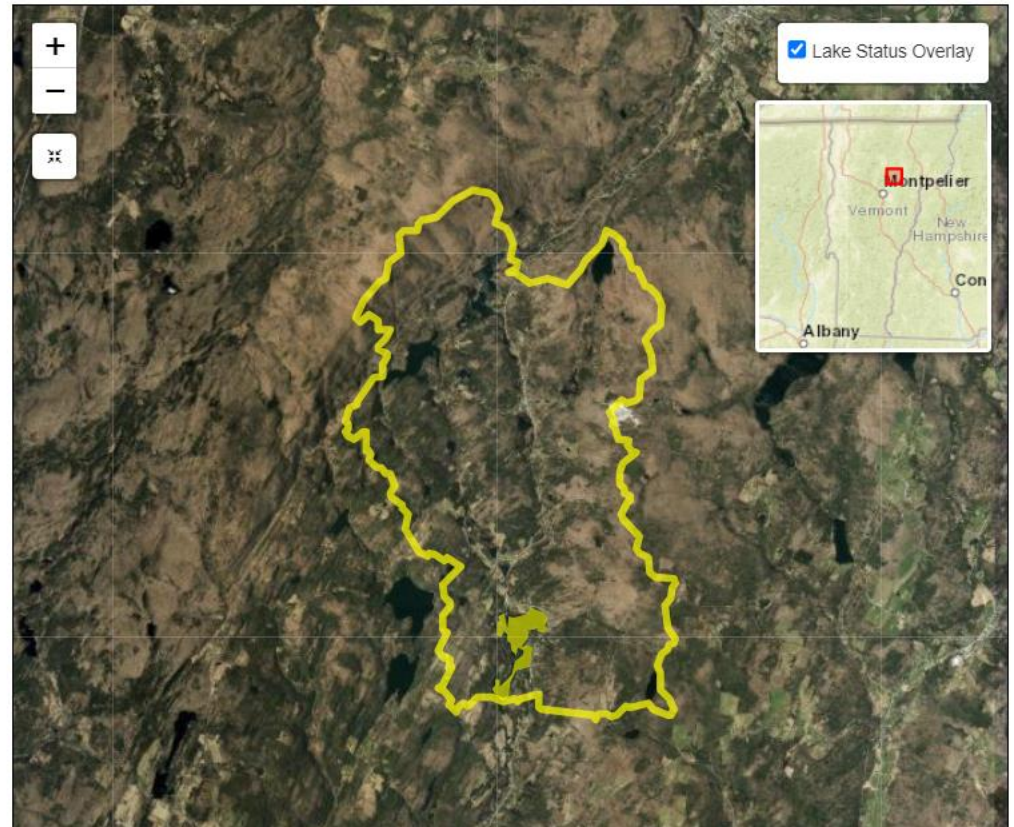
Watershed: **Moderately Disturbed**

WQ Standards: **Stressed**

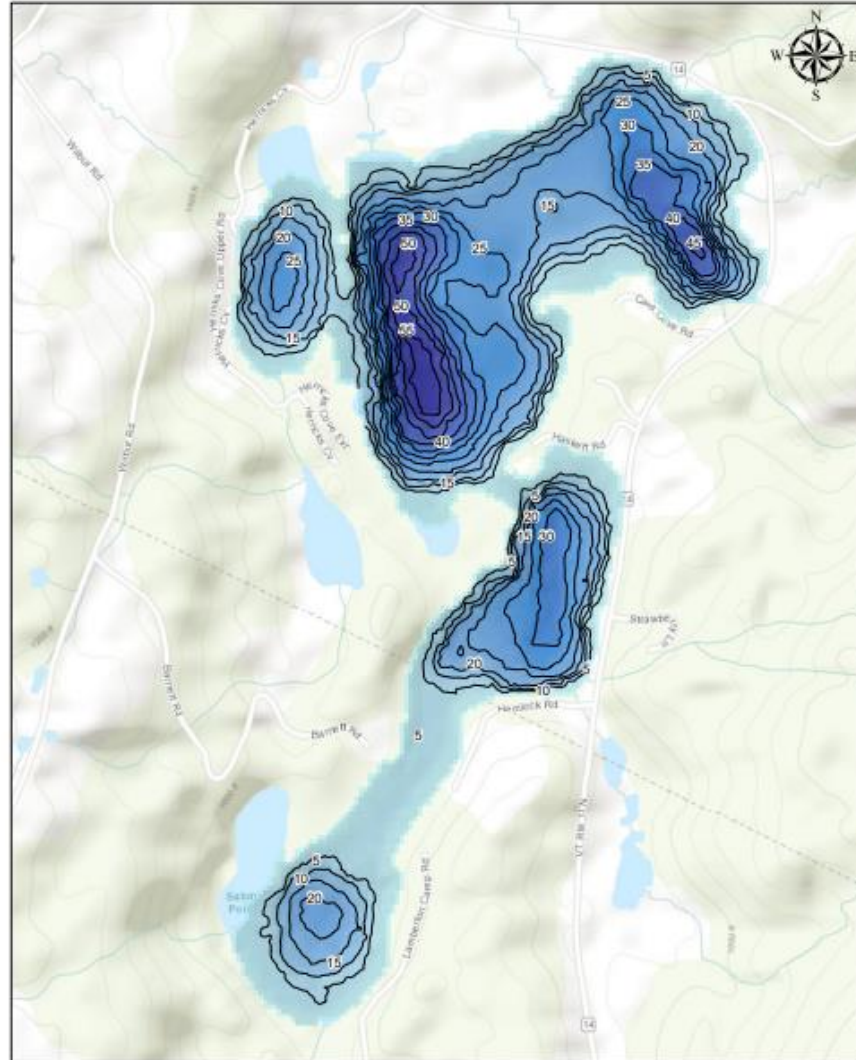
WQ Standards Details

Stressed – Organic Enrichment - DO

- Color Scoring System
- Good Conditions (Blue)
  - Fair Conditions (Yellow)
  - Poor Conditions (Red)
  - Insufficient Data (White)



# Sabin Pond, Woodbury, VT



## Legend

Depth (ft.)

High : 0

Low : 57

— Depth Contour (5 ft.)

0 0.05 0.1 0.2 Miles

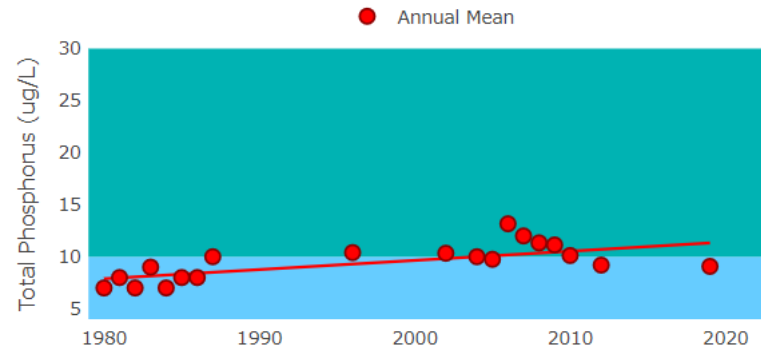


Source data collected: 7/6/2018

# Long Term Trends of Sabin Pond

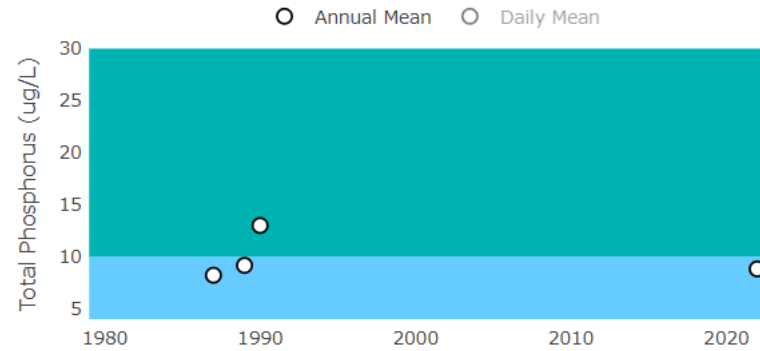
### Spring Phosphorus

Trend: Highly Significantly Increasing (p-value = 0.0093)



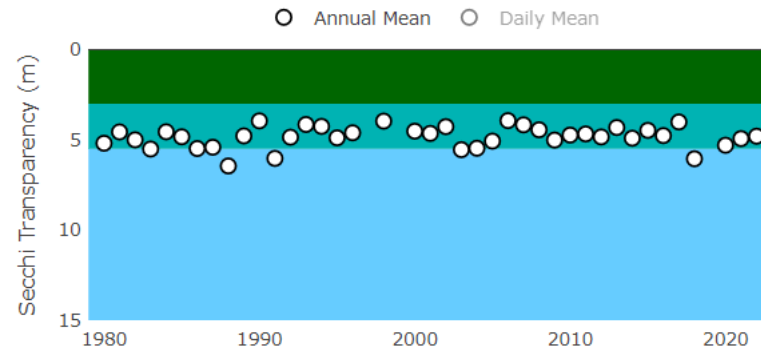
### Summer Phosphorus

Trend: Insufficient Data



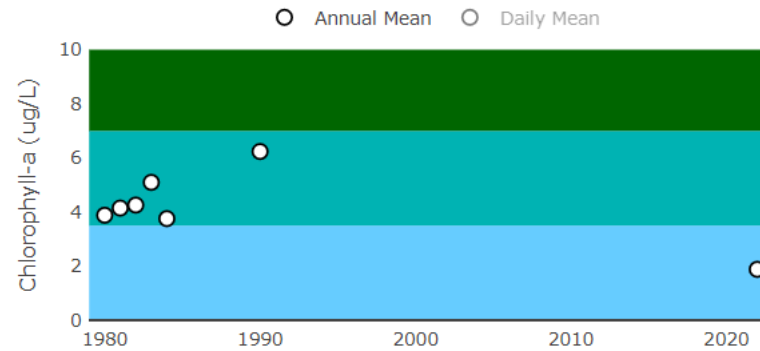
### Summer Secchi

Trend: Stable (p-value = 0.8705)



### Summer Chlorophyll-a

Trend: Stable (p-value = 0.1885)



# Forest Lake (Nelson Pond)

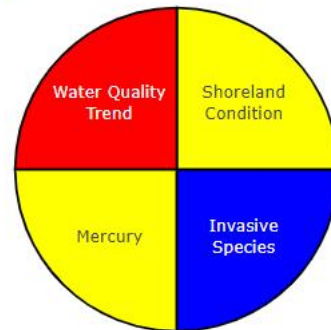


## Vermont Lake Score Card Forest Lake (Nelson Pond)

Scores

Water Quality Data

Lake Information



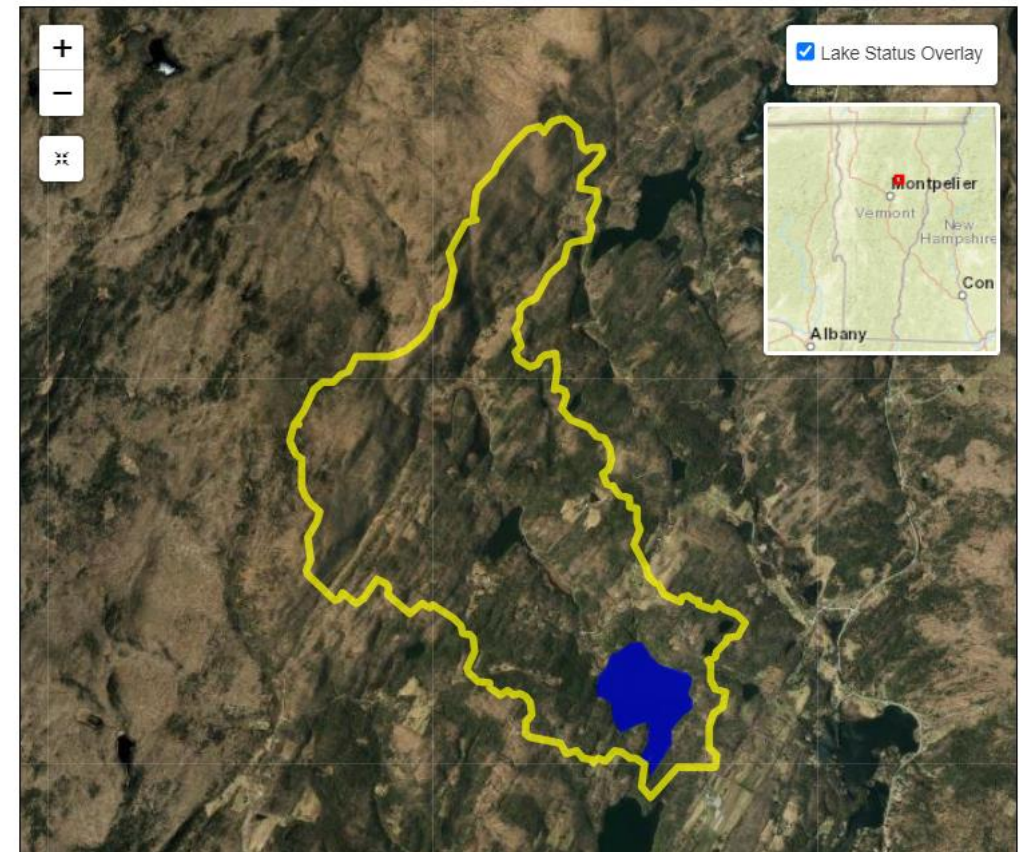
Watershed: **Moderately Disturbed**

WQ Standards: **Meets Standards**

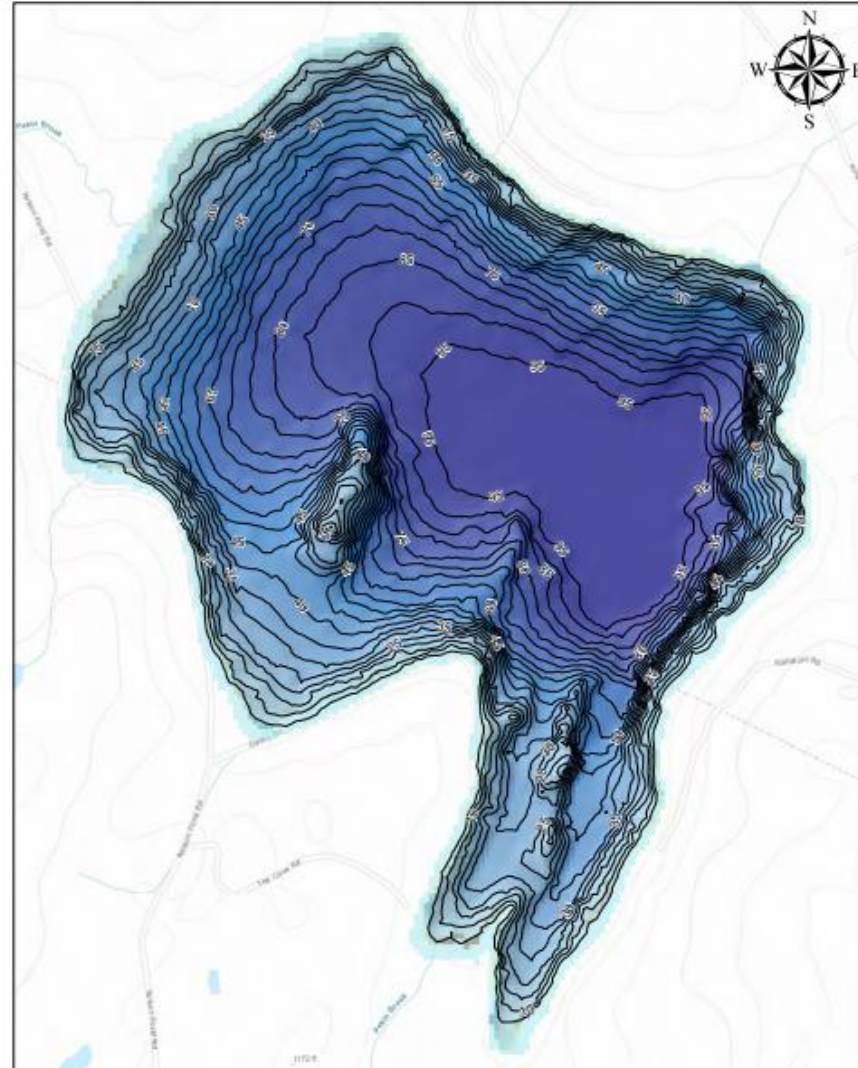
Color Scoring System

- Good Conditions
- Fair Conditions
- Poor Conditions
- Insufficient Data

[Learn How Lakes Are Scored](#)



# Forest Lake, Calais, VT



## Legend

Depth (ft.)

High : 0

Low : 98

— Depth Contour (5 ft.)

0 0.05 0.1 0.2 Miles

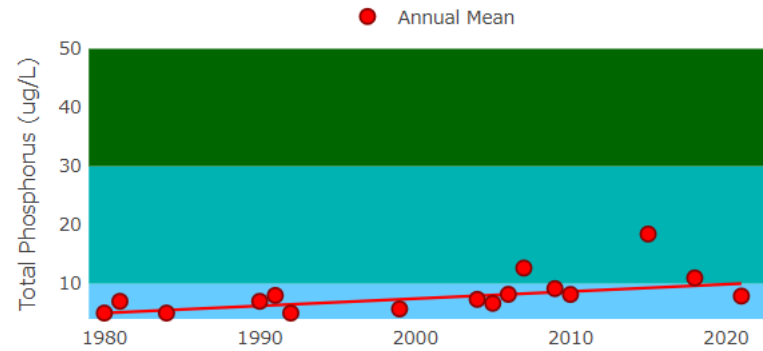


Source data collected: 6/14/2018

# Long Term Trends of Forest Lake

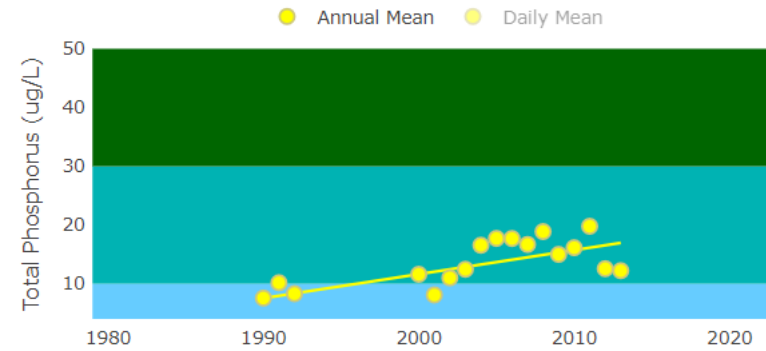
## Spring Phosphorus

Trend: Highly Significantly Increasing (p-value = 0.0028)



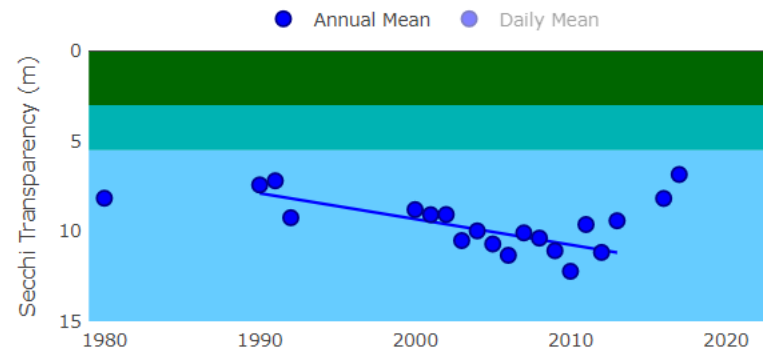
## Summer Phosphorus

Trend: Significantly Increasing (p-value = 0.0192)



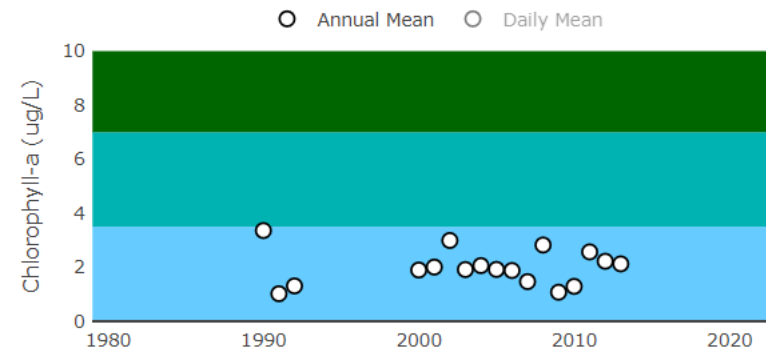
## Summer Secchi

Trend: Significantly Increasing (p-value = 0.0117)



## Summer Chlorophyll-a

Trend: Stable (p-value = 0.7187)





# 2024 Lake Wise Assessments

Lake Wise aims to inform, teach, and encourage change in current lakeshore development practices to ones that are more lake friendly.



# Sabin Pond - Forest Lake - Lake Wise Assessments Map

## ForestLake Lakeshore Parcels

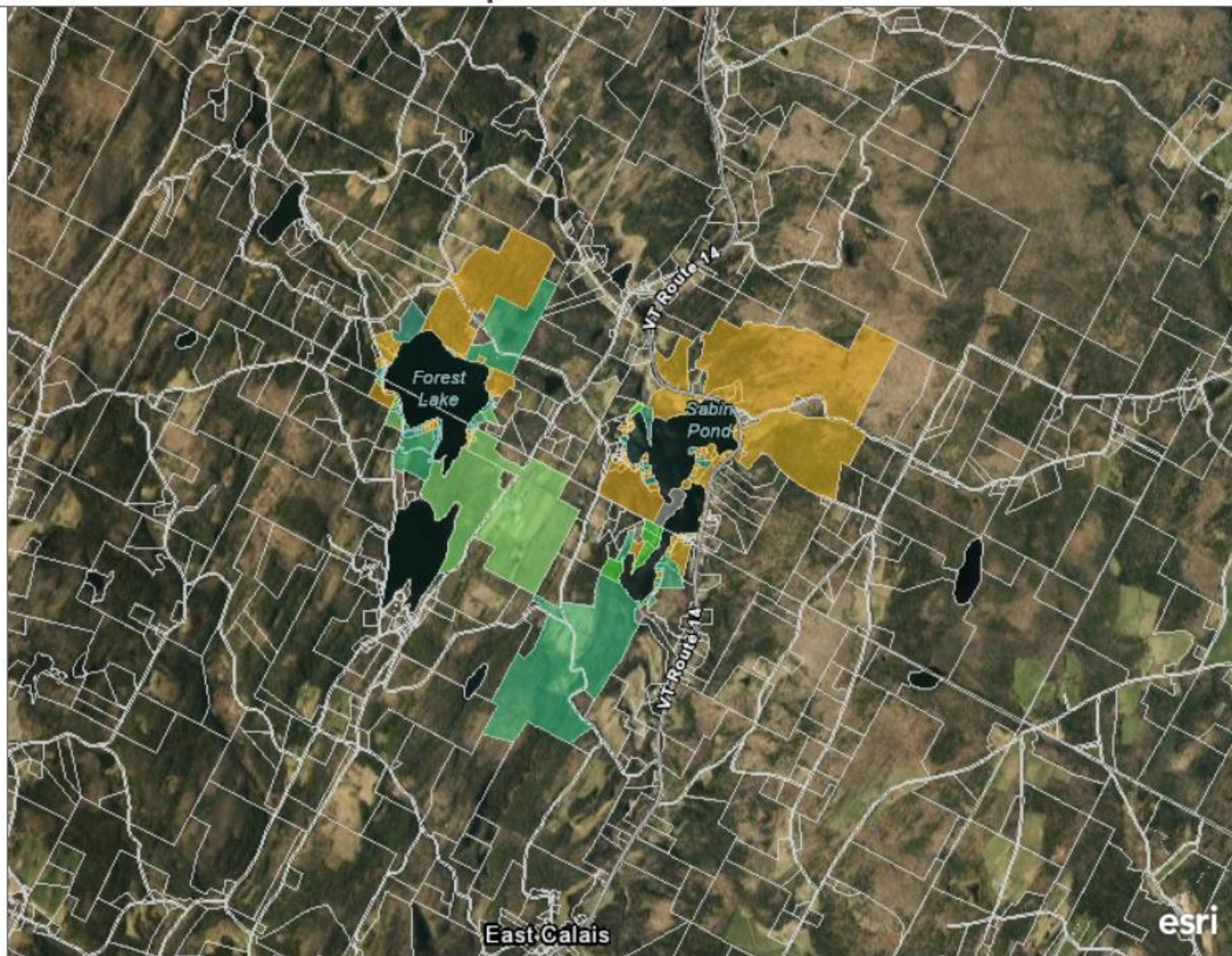
### New expression

- Award Potential , Seasonal
- Award Potential , Residential
- Award Potential , Farm / Miscellaneous
- Uplift Potential , Seasonal
- Uplift Potential , Residential
- Uplift Potential , Miscellaneous

## SabinPond Lakeshore Parcels

### New expression

- Award Potential , Seasonal
- Award Potential , Residential
- Award Potential , Miscellaneous
- Uplift Potential , Seasonal
- Uplift Potential , Residential
- Uplift Potential , Miscellaneous
- Other



esri

1mi



# Outreach efforts will include:

- Fliers
- Press releases
- Social media posts
- Word of mouth
- Door -to -Door advertisement on Memorial Day weekend
- Coordination with and promotion by the towns of Woodbury and Calais and Woodbury conservation commissions and Calais Lakes and Streams Committee



## Are you Lake Wise?

### Free Lake Wise Assessments for Woodbury Lake and and Nelson Pond

Lake Wise aims to inform, teach, and encourage change in current lakeshore development practices to ones that are more lake friendly.



Space is limited, scan the QR code to sign up today!



# PRIORITIZATION CRITERIA

LWAP Guidance	Unified Criteria for SWMP	Elmore LWAP - Non-Unified Criteria	Caspian Criteria
Sediment Loading	Sediment Reduction (lbs.)	Sediment Reduction	Sediment Reduction (lbs.) and/or Erosion Mitigation (volume)
Phosphorus Loading	P Reduction (lbs.)	P Reduction	P Reduction (lbs.)
Water Quality Benefits (sediment & nutrient reduction effectiveness)	Impervious managed (ac)	Drainage Area (size)	Drainage Area (size)
Costs, including BMP unit costs & adjustments	% WQv / CPv	Impervious Area (size)	Impervious managed (ac)
Landowner Support	% Rev met	Hydrologic Connection	Hydrologic Connection
Location (access)	Erosion Mitigation (volume)	Landowner Support	Landowner Support
Hydrological Connectivity	GI Opportunity	O&M Requirements	Cost
Enhances Natural Buffers	Landowner Support	Cost & Constructability	Efficiency (\$ / lbs P removed)
Wildlife Benefits	Complexity (permit/project)	Additional Benefits (see codes)	O&M Requirements
Project Feasibility	Infrastructure conflicts	<b>Additional Benefits</b>	Geomorphic Benefits
Maintenance Requirements	Cost	Chronic Problem	<b>Additional Benefits</b>
Public Demonstration Site	Efficiency (\$ / lbs P removed)	Flooding	Chronic Problem
Protects Other Restoration Efforts	O&M / Access	Educational	Flooding
Constructability	Educational / Recreational Benefits	Infrastructure conflicts	Educational - Public Demonstration
	Habitat Creation	Drains to connected stormwater infrastructure	Infrastructure conflicts
	Infrastructure improvement	Improves existing BMP performance	Reduces thermal pollution
	Outfall erosion control	High visibility	Peak flow reduction
	Hydrologic connection	Reduces thermal pollution	Enhances/Creates natural habitat
	Flood mitigation	Peak flow reduction	Easy Access for Construction
	Local Concerns	Enhances natural habitat	

# Funding sources for identified projects:

- DEC Enhancement
- Lake Champlain Basin(LCBP)
- Clean Water Service Provider (CWSP)
- Water Infrastructure Sponsorship program (WISPr)
- Watershed United Vermont (WUV)

# Thank you!

**Adelaide Dumm-Winooski** Natural Resources Conservation District  
[|Adelaide@winooskinrcd.org|](mailto:Adelaide@winooskinrcd.org) (802) 828-4493 extension 3178 (Primary Contact)

**Dana Allen** – Fluid State Consulting | [dana@fluidstateconsulting.com](mailto:dana@fluidstateconsulting.com) | 802.999.9762

**Becky Tharp** – Just Water Consulting | [becky@justwaterconsulting.com](mailto:becky@justwaterconsulting.com) | 802.578.8592