



HEALTHY LAND. CLEAN WATER.  
VIBRANT COMMUNITY.

Our mission is to steward the Mad River Valley's healthy land and clean water for our community and for future generations.

We bring people together to:

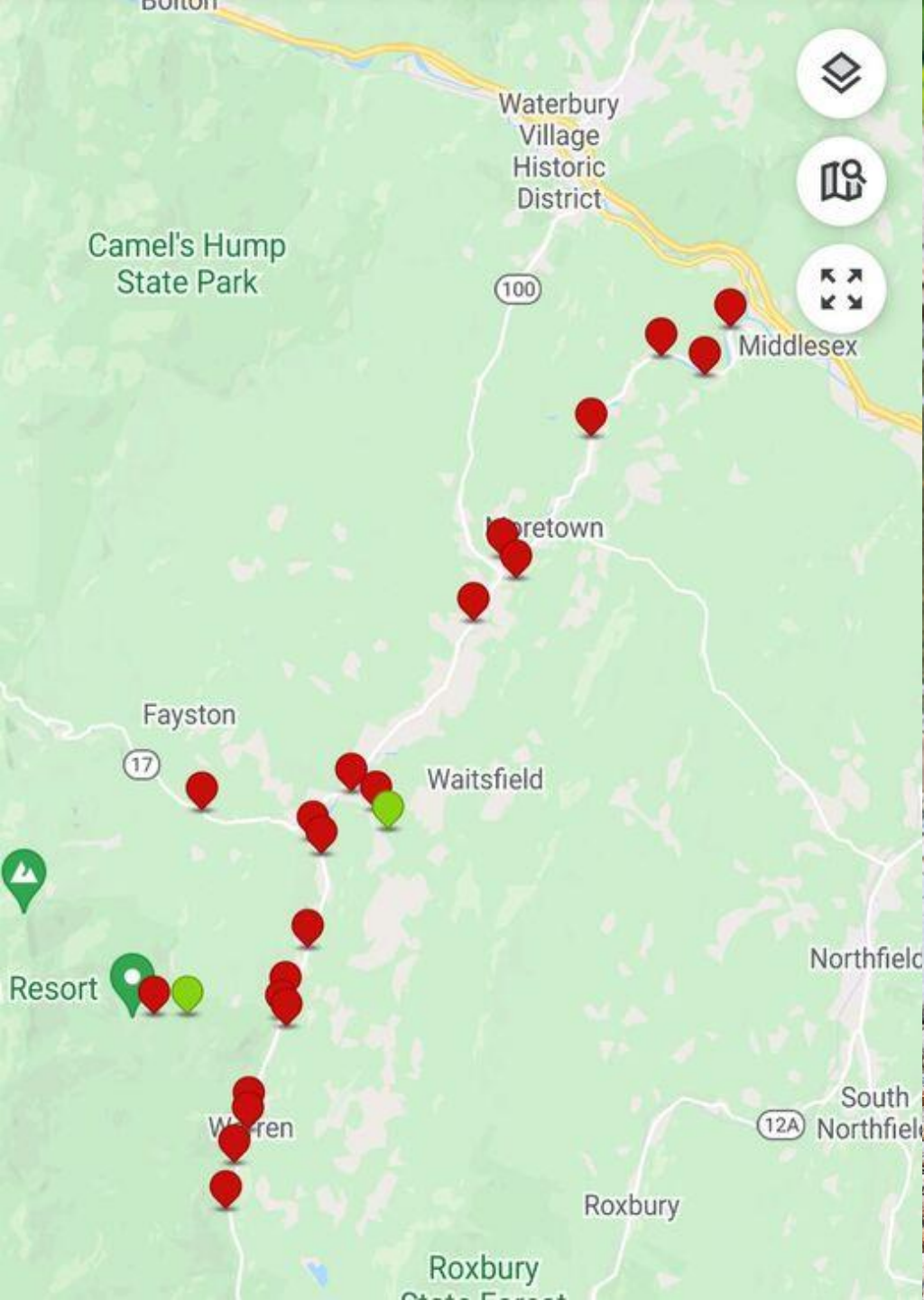
- **Learn** about the health of the land and water;
- **Conserve** our valued natural resources; and
- **Celebrate** this special place.

# Summer Work

- **Mad River Watch** water quality monitoring
- **Community Engagement** celebrating & exploring our watershed
  - Expert Series, Book Club
- **Voice for the Watershed**
  - Conservation & Recreation Vision Project
- **River Restoration** floodplain forest & wildlife habitat
  - Project scoping, MRV Conservation Commission Partnership, Site Stewardship
- **Storm Smart & Streamwise** building resilience one property at a time
- **Ridge to River** Coalition for Climate Resilience

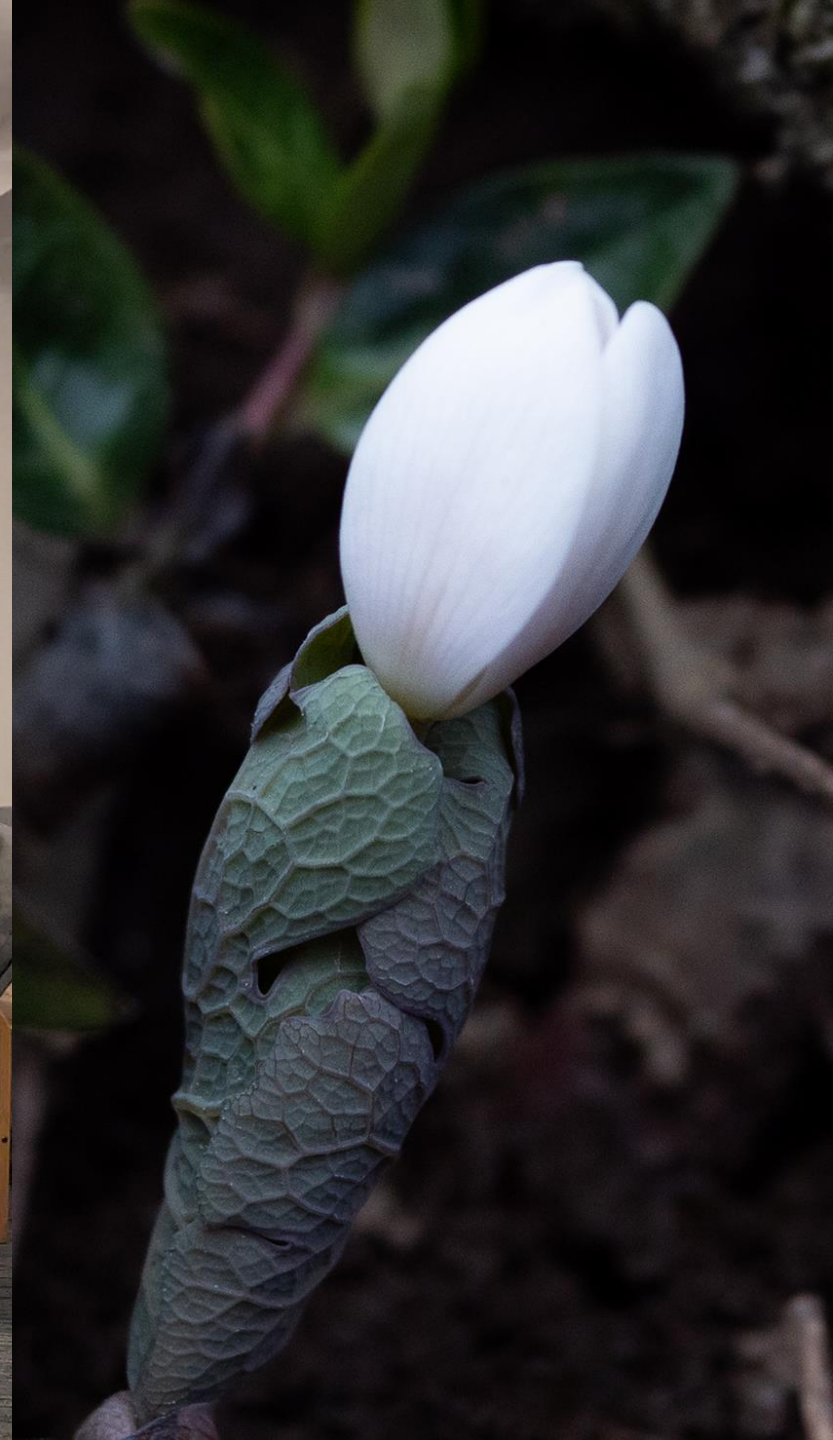


**Mad River Watch** water quality monitoring

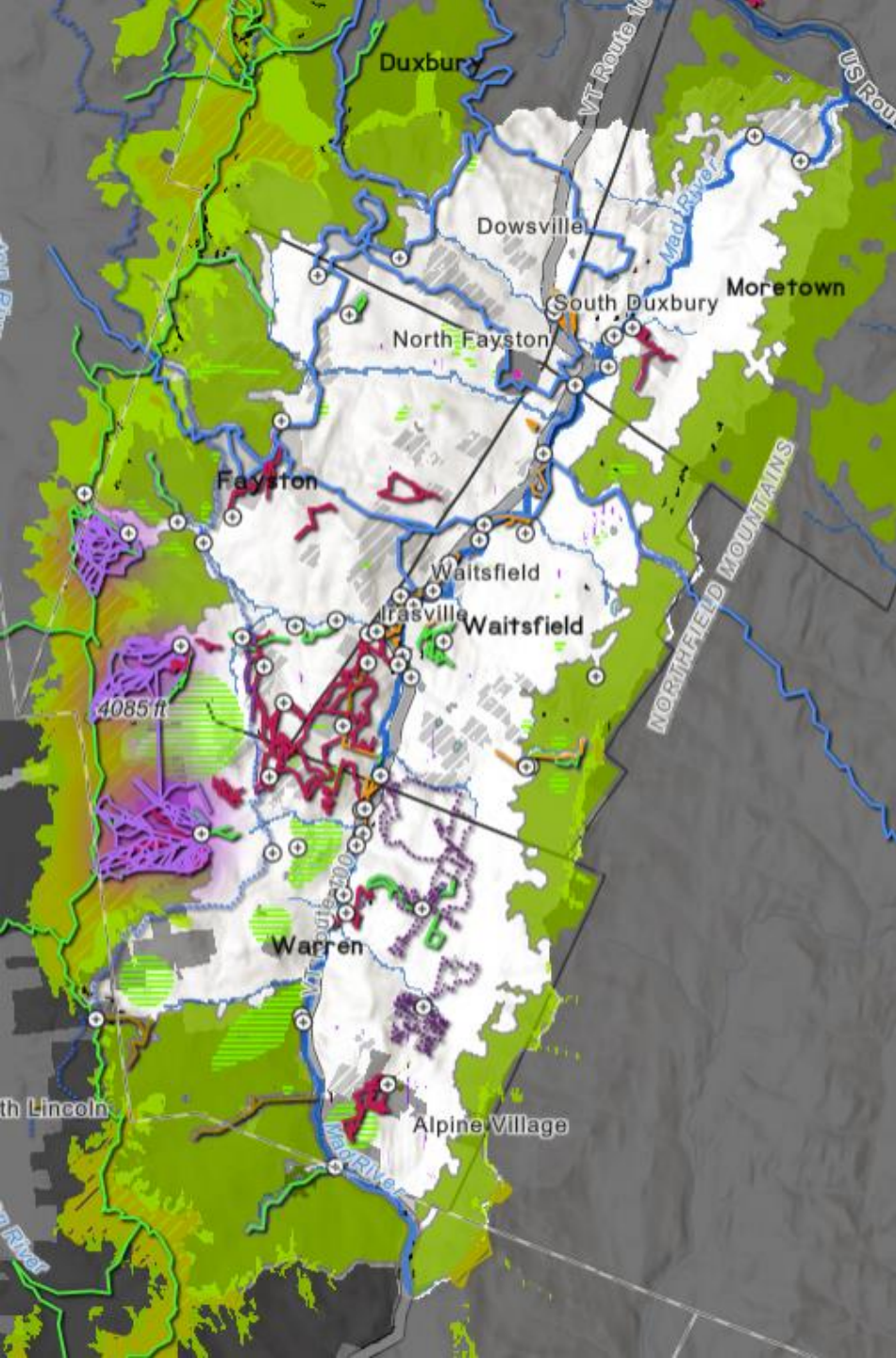


# **Community Engagement**

celebrating & exploring our watershed



# **Voice for the Watershed**



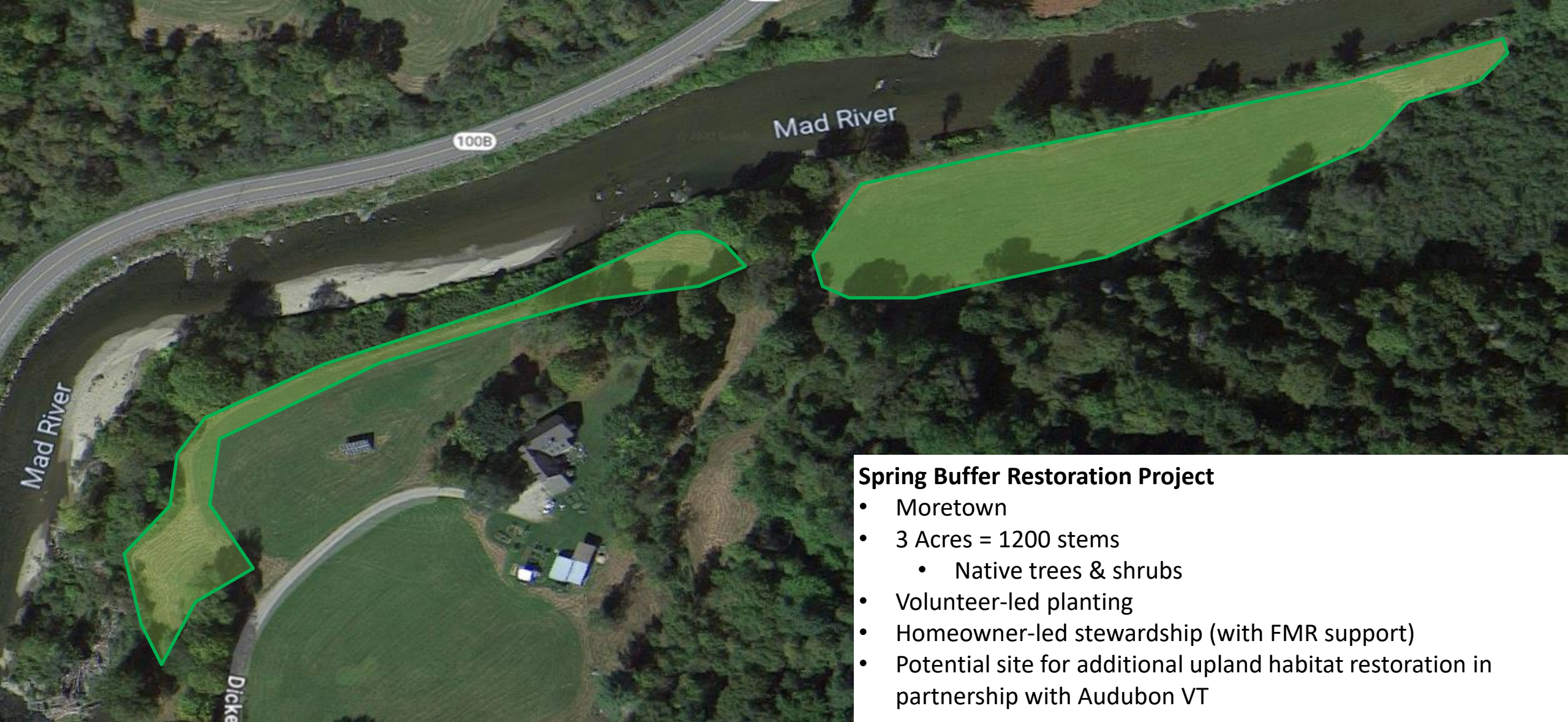
# Conservation & Recreation Visioning Project

- Duxbury Rep/Duxbury Land Trust**
- Fayston Conservation Commission**
- Friends of the Mad River**
- Mad Dog Trout Unlimited**
- Mad River Path**
- Mad River Riders**
- Mad River Ridge Runners**
- Moretown Rec Committee, Stark Mountain Foundation &**
- MRV Bear Initiative**
- MRV Backcountry Coalition**
- MRV Chamber of Commerce**
- MRV Planning District**
- MRV Recreation District**
- Sugarbush Resort**
- Waitsfield Conservation Commission**
- Warren Conservation Commission**



# **River Restoration**

floodplain forest & wildlife habitat



### **Spring Buffer Restoration Project**

- Moretown
- 3 Acres = 1200 stems
  - Native trees & shrubs
- Volunteer-led planting
- Homeowner-led stewardship (with FMR support)
- Potential site for additional upland habitat restoration in partnership with Audubon VT

### **Summer Stewardship**

- Mowed buffer to manage knotweed
- Weed whack around stems
- Monitor live stake willow in knotweed patch



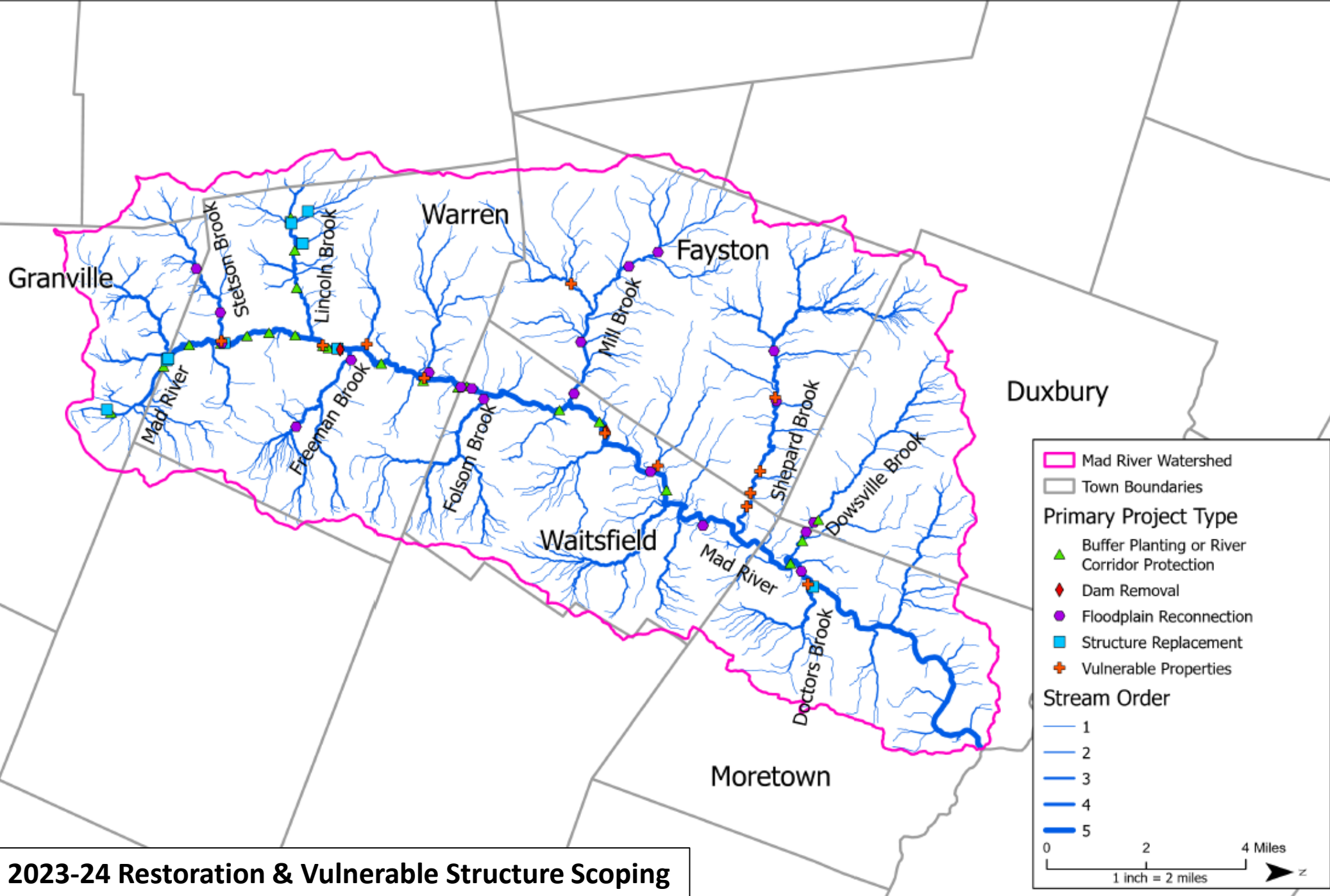
### **2022 Buffer Restoration Site**

This site was planted in 2022. Damages (erosion) occurred in Dec 2023, we are now considering options for this site that include: more planting, willow stakes & fascines, installed rootwads, river corridor easement



## Welcome Center Riparian Buffer Restoration

- Work with Harwood students to ID existing species
- Volunteer invasive plant removal
- Prep for fall planting



**2023-24 Restoration & Vulnerable Structure Scoping**

Fitzgerald Environmental Associates, LLC  
 164 Main Street, Suite 2  
 Colchester, VT 05446  
 Telephone: 802.876.7778  
[www.fitzgeraldenvironmental.com](http://www.fitzgeraldenvironmental.com)

Notes:

Mad River Watershed Potential Projects

JWC	EPF
MAP BY	CHECKED

SCALE: 1 inch = 2 miles

DATE: July 14, 2023

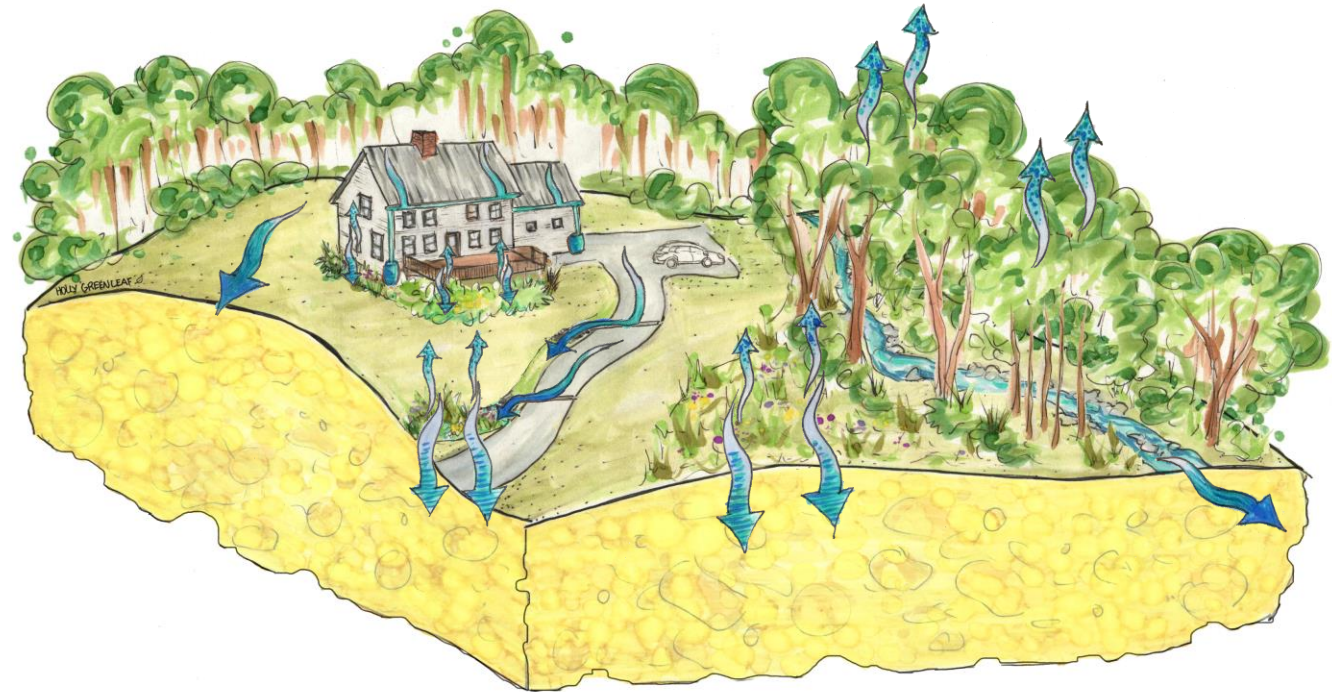
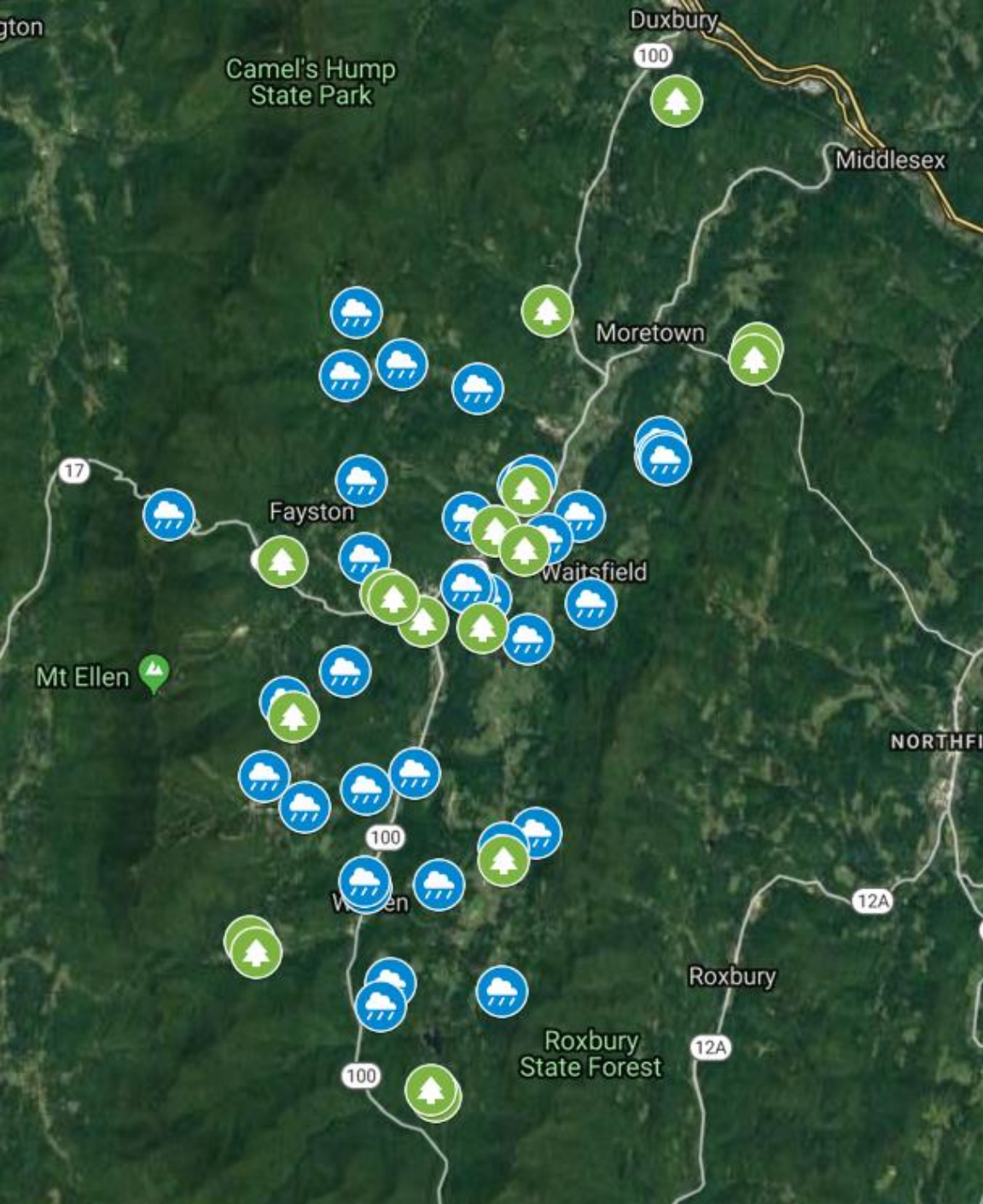
**SHEET 1**

# Conservation Commission Partnership



# **Storm Smart & Stream Wise**

building resilience one property at a time



Slow It, Spread It, And Sink It



# **Ridge to River**

Coalition for Climate Resilience

# Smart Growth

Impact → High

## Quick Wins

- Outreach to second home
- Involving second home owners in understanding challenges of managing property
- Co-develop systems for second home
- Update to local/regional non-attached plans
- Ways to park, multi-use, mixed-use plans
- Local climate action progress tracking
- Promote Nature Based Solutions for Climate Resilience - Build a Project Pipeline
- Local climate action progress tracking
- Need to tie energy efficiency, renewable energy, resilience into same conversation
- Carbon tax state wide country wide local incentives for low carbon living
- Identify waste high capture opportunities (communities)
- Group electric demand in making some plans (like Home Loan - electricity systems)

## 11- Ins

- Not electronic recently in fact from Cooper with the work in capital becoming that great
- More building needs to be concentrated
- Less need of More all the options
- Co-develop systems/avoid heat of WW infrastructure install
- More access to green bank funding
- MAKE sure investment in infrastructure social investment
- Also Drainage needs Roads
- Smaller than

Low → Effort → High

