

When Municipalities and Businesses Come Together

A Story of the American Rescue Plan Act

Ashley Hellman
January 9, 2025

Overview

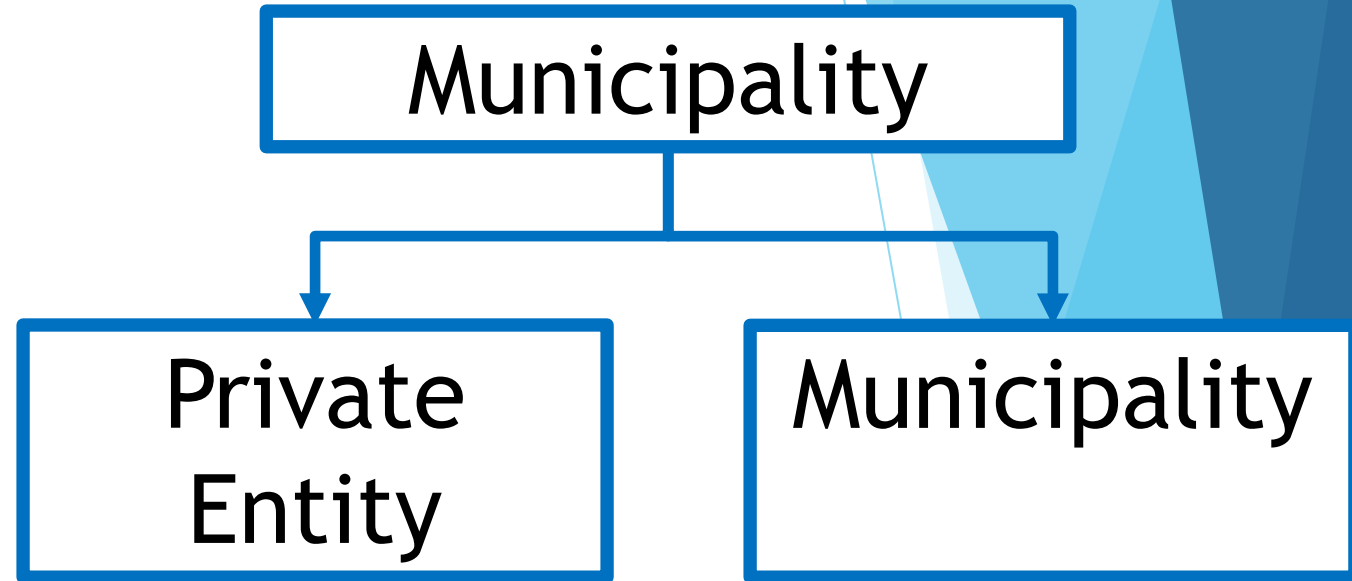
- ▶ Definitions
- ▶ How it started
- ▶ Information-based projects
- ▶ Equipment-based projects
- ▶ Outreach-based projects
- ▶ Take-Home messages
- ▶ Questions

Definitions

- ▶ **Municipality** - a village, town, or city that's usually governed by a mayor and/or council/select board
- ▶ **Private entity** - a business/company
- ▶ **WWTF** - wastewater treatment facility
- ▶ **POTW** - publicly owned treatment works (WWTF + collection system)
- ▶ **BOD** - Biochemical Oxygen Demand - a measure of the amount of oxygen required to remove organic matter from water in the process of decomposition by aerobic bacteria
- ▶ **TSS** - Total Suspended Solids - materials in water that are not soluble - also particles that are large enough to be held back by a filter
- ▶ **Side streaming** - collecting high-strength, concentrated wastes at the source and setting them aside for disposal (pre-drain)

The Gist

- ▶ Municipalities applied for grant funds
 - ▶ On behalf of themselves
 - ▶ Industrial User Surveys
 - ▶ Local Limits
 - ▶ Sewer Use Ordinances
 - ▶ On behalf of private entities
 - ▶ Design and installation/construction of a pretreatment system
 - ▶ Discharge from a business to a VT municipal WWTF
 - ▶ Side streaming



Landfill Leachate

- ▶ City of Montpelier/New England Waste Services of Vermont
- ▶ Reduction of Per- and Polyfluoroalkyl Substances (PFAS)
 - ▶ “Forever chemicals”
- ▶ Foam Fractionation

▶ ANR.WSMDWastewater@vermont.gov



Industrial User Surveys, Local Limits, and Sewer Use Ordinances

- ▶ City of Burlington (\$183,188)
- ▶ City of South Burlington (\$199,000)

- ▶ Gathering information about industrial users of a municipality's POTW, including **Significant Industrial Users (SIUs)**
- ▶ Setting **Local Limits** - wastewater limitations that apply to industrial facilities that discharge to a POTW
- ▶ Revising a **Sewer Use Ordinance** - updating the document that governs which pollutants and in what quantities they may be discharged to a collection system



South Burlington WWTF

Beer

- ▶ Morrisville Water & Light/Rock Art Brewery
- ▶ Side streaming
- ▶ \$50,000

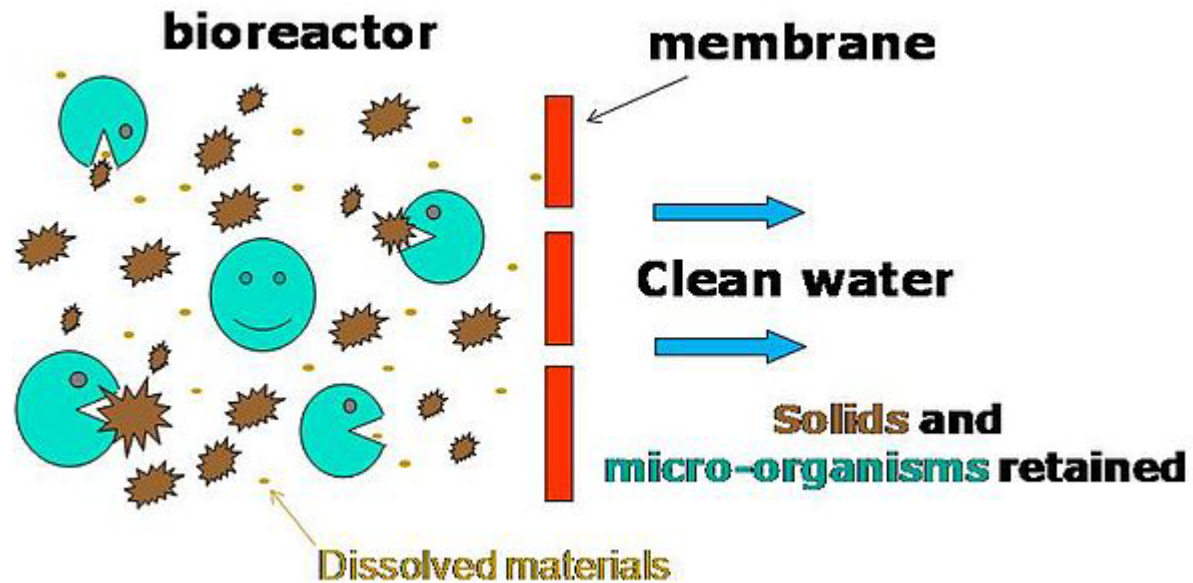


shutterstock.com • 1803639097



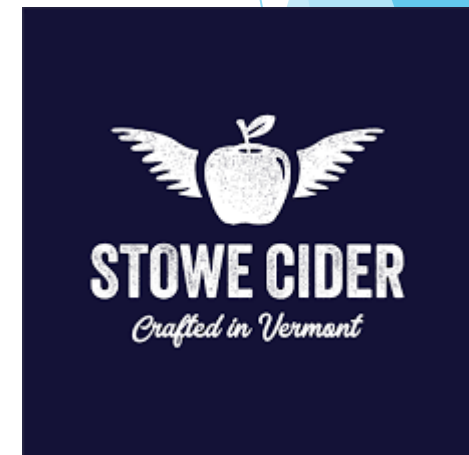
Beer Continued

- ▶ Town of Williston/Burlington Beer Company
- ▶ Membrane Bioreactor
- ▶ \$850,000

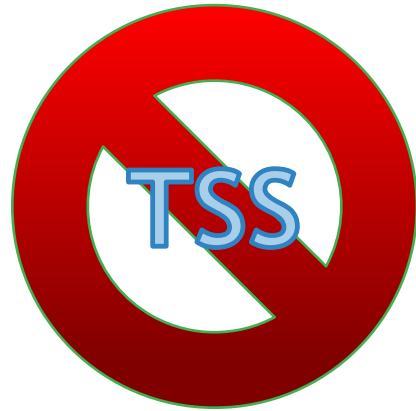


Other Beverages

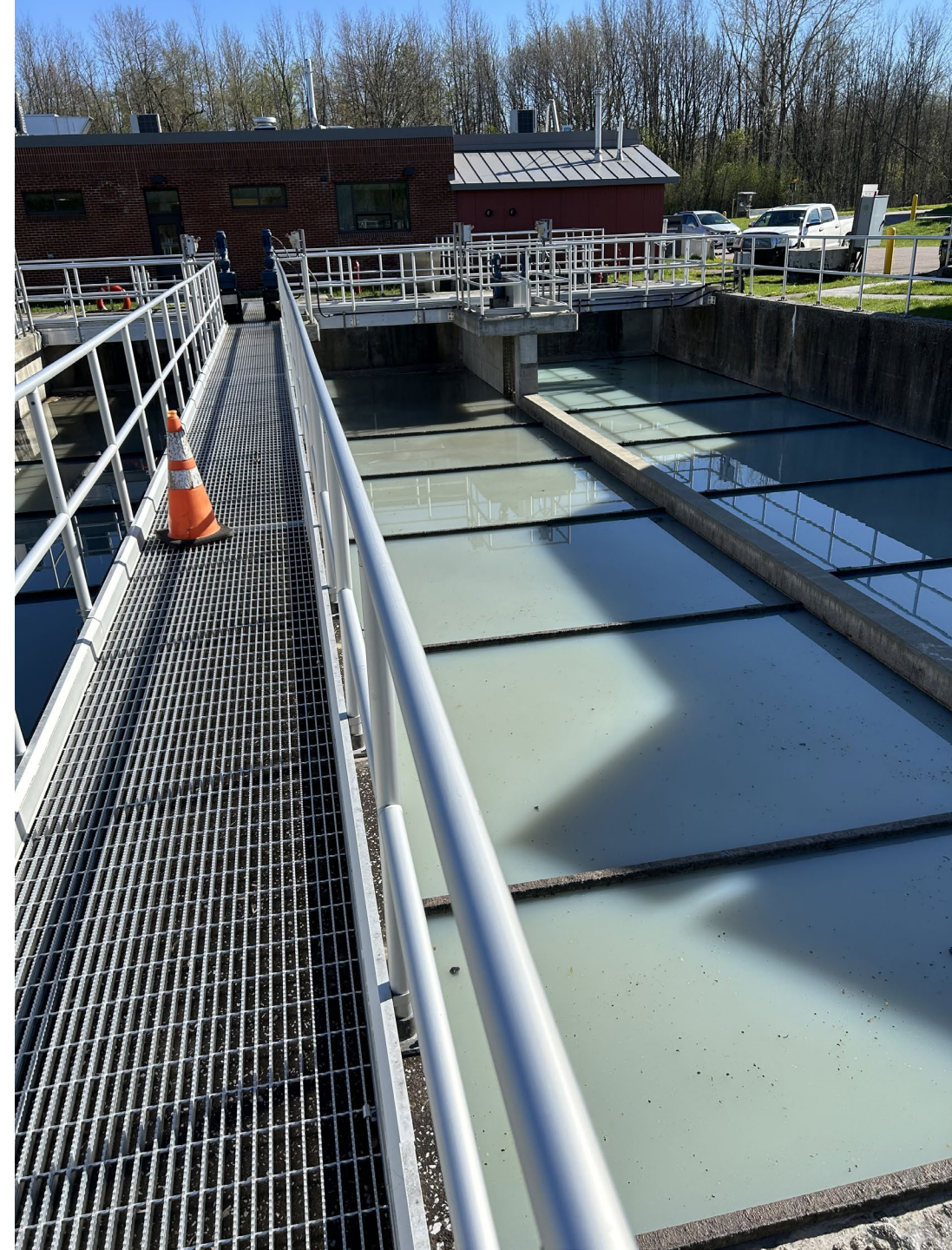
- ▶ Town of Lyndon/Milou LLC (Mead, hard cider, vinegar, cold brew, coffee and kombucha)
 - ▶ \$502,889
- ▶ Town of Middlebury/WhistlePig Whiskey (Whiskey)
 - ▶ \$130,645
- ▶ Town of Stowe/Stowe Cider (Hard cider)
 - ▶ \$408,595



Food



- ▶ Town of Brattleboro/Commonwealth Dairy
 - ▶ \$250,000
- ▶ Town of Middlebury/Agri-Mark, Inc.
 - ▶ \$623,288



Old Unit vs New Unit



Metals

- ▶ Town of Randolph/New England Precision, Inc.
 - ▶ Cu, Pb, Cr, Ni, Zn
 - ▶ \$332,000
- ▶ City of Burlington/Edlund Company
 - ▶ Ni, Cr, Cu, Pb, Cd, Ag, Zn
 - ▶ \$342,125.00
- ▶ City of Vergennes/Collins Aerospace
 - ▶ Ag, Cd, Cu, Cn, Pb, Al, Cr, Ni, Zn
 - ▶ \$921,566



Outreach

- ▶ Model Sewer Use Ordinance
- ▶ Classes on IUSs, Local Limits, and SUOs
- ▶ \$40,000



Take-Home Messages

- ▶ Industries produce wastewater with pollutants as part of their operations.
- ▶ Pretreatment addresses these pollutants at their sources (on the company's premises).
- ▶ ARPA funds have allowed businesses to install new or replace aged pretreatment equipment when they otherwise would not.
- ▶ Municipalities benefit because those industrial pollutants are no longer flowing to their WWTFs, thus removing the burden of treatment and freeing up capacity.
- ▶ This leads to cleaner Vermont lakes and rivers.
- ▶ \$7 million will lead to significant improvements.
- ▶ Everybody wins!

Questions

