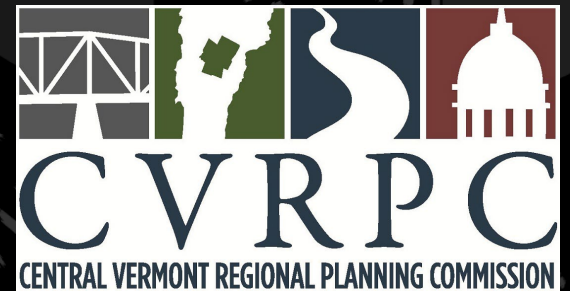


Hot Weather Preparedness Planning Wrap-Up Summary

Sam Lash- Climate & Energy Planner

Keith Cubbon-Emergency Management Planner



Regional & Municipal Heat Vulnerability

6

THEMES



Population



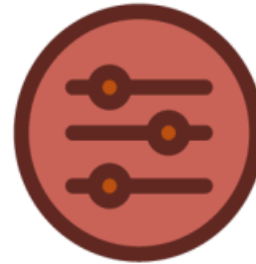
Socioeconomic



Health



Environmental



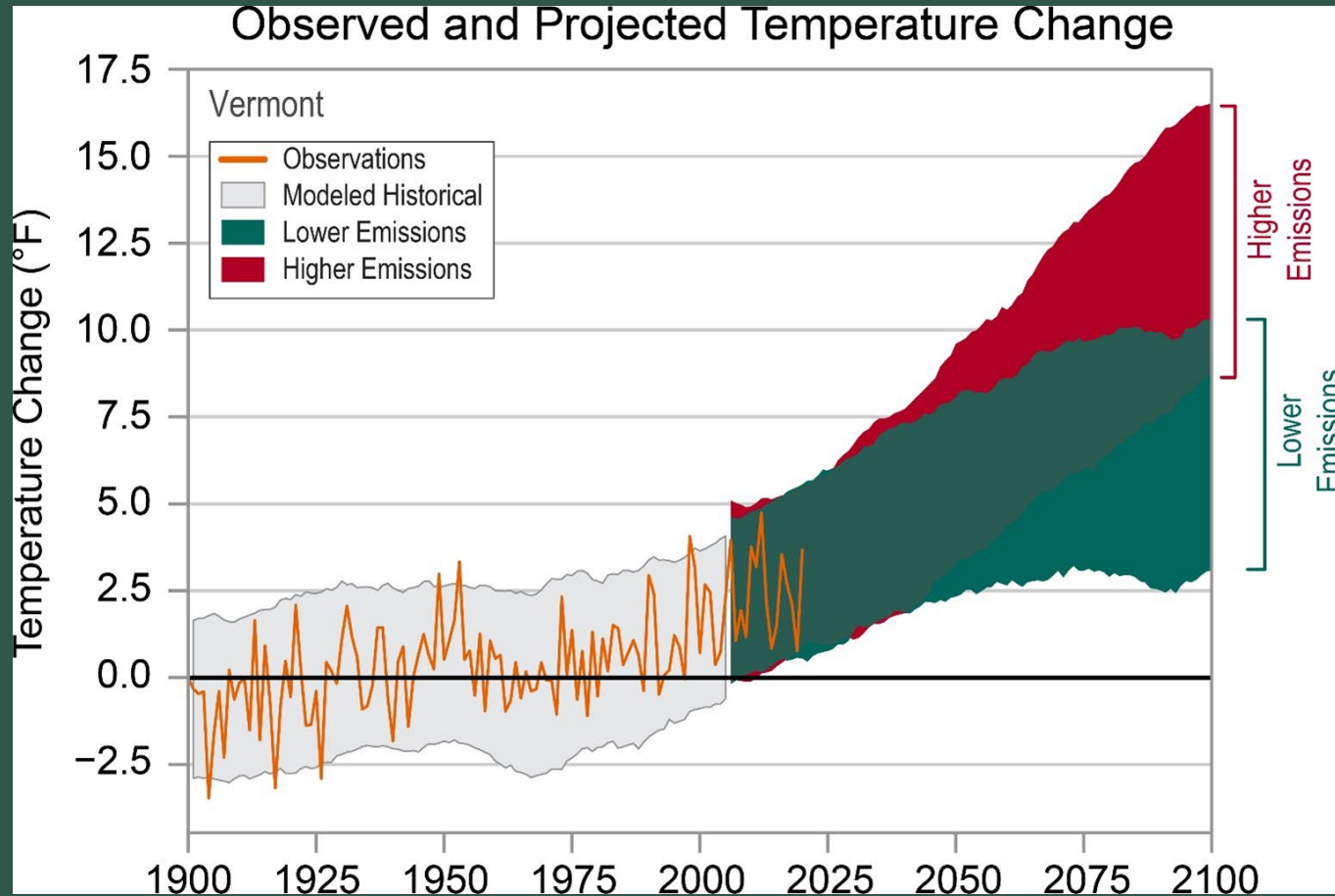
Acclimatization



Heat Emergency

https://drive.google.com/file/d/1zndvZkV8DUB3NqwHYhPLvNEjtBXogimF/view?usp=drive_link

We can expect more frequent and severe hot weather in the future



Action Planning: Template for hot weather emergency planning

Designed to guide hot weather emergency response planning

Used to describe **key actions** to take during a hot weather event, **when** to take them, and **who** is responsible for each action

Can be adopted as an annex to the Local Emergency Management Plan.

Examples: Barre City, Cabot, Montpelier, Moretown, Warren

Planning

- Pre-Planning
 - Do existing plans already address extreme temperatures? How are they working/can be improved?
 - What are you already doing?
- Community Asset Inventory: people, facilities, communication systems, financial resources
- Potential Partners
 - Emergency services
 - Municipal staff & officials
 - Organizations that provide emergency assistance/wrap around services (THRIVE)
 - Businesses/organizations serving folks at risk during hot weather (schools, libraries, large/recreation sites, etc)
 - Businesses/organizations that could offer cooling and/or warming sites to the public
 - Local energy committees and energy efficiency/weatherization organizations
 - Animal shelters, boarders, hospitals, that could shelter pets in an emergency

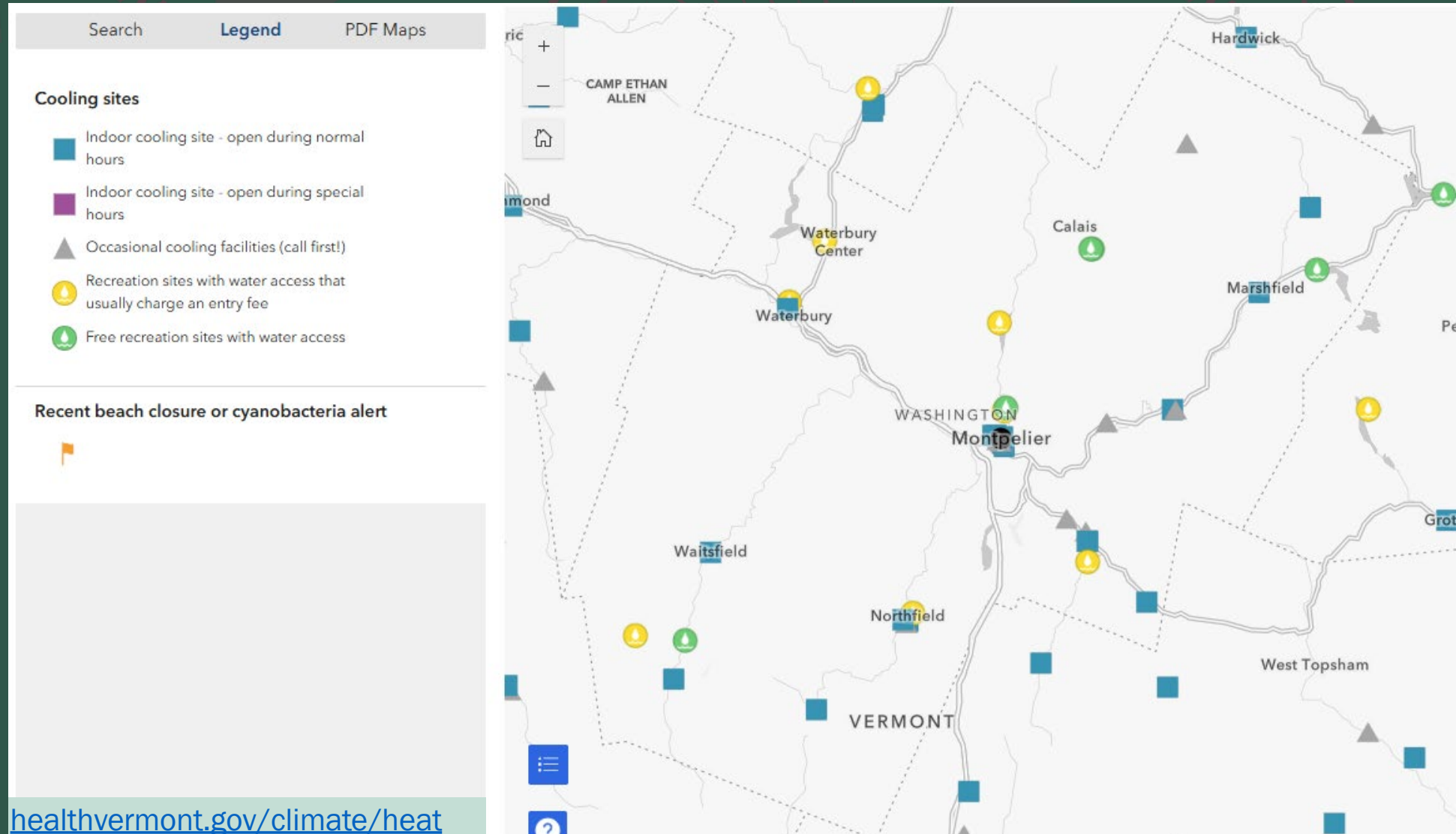
Typical Actions of a local hot weather plan

Action	Notes
Public outreach about heat warnings and actions to take to protect health	See page 6 for more guidance
Activate or direct residents to a call line to address questions about hot weather	Most Vermonters should call 2-1-1 for non-emergency assistance during hot weather
Open cooling facilities for people without access to air conditioning	See page 7 for more guidance
Mobilize support networks to check in on and assist older adults, people experiencing homelessness, and other people at high risk	See page 8 for more guidance
Modify or cancel outdoor activities related to work, school, athletic, or recreational events	See page 9 for more guidance.
Mobilize extra emergency response and medical personnel	Response personnel can help with proactive safety checks or for emergency response
Coordinate with utilities to ensure continuous service throughout a heat event	Some utilities have policies to restore service or avoid cutting service during hot weather

Cooling site map: 42 sites in Central Vermont

14 Libraries
13 Pools/Swimming
Access/Parks&Rec
3 Community/Public
Health
5 Municipal Buildings
(Fire, Police, City Hall,
Other)
3 Other
2 Senior Centers
2 Faith Spaces

Many without formalized
plans e.g. extended hour
policies, additional
resources/staff/offerings



Lessons Learned / Recommendations

Planning

- All-hazards plans were mostly insufficient
- Local & Community Partners are key
- More attention to longer-term adaptation

Communications

- Increase “push” notifications to phones
- Focus on highest risk groups

Cooling centers

- Expand coverage, arrange transportation
- Allow Pets
- Extend hours, including overnight shelters
- Capital Planning: Municipal Buildings

Home-based assistance

- Need home cooling assistance programs
 - Provide safety checks for high-risk people at their homes
-

Next Steps

- Contact Keith or Sam if you'd like support with a plan

Have A Plan:

- Integrate into Existing Plans:
 - Review with Town Leadership and stakeholders and append to your [Local Emergency Management Plan](#)
 - Local Hazard Mitigation Plan
 - Town Plan & Capital Planning
 - Health Equity, Green Infrastructure, Climate & Energy goals, Municipal Buildings & Facilities
 - Think about Adaptation:
 - Land Use (conservation, shade trees, building orientations, impervious surface, standards)
 - Building Designs, Weatherization, & HVAC
 - Seasonal community engagement outreach
- Exercise & Evaluate your plan
- Ongoing: partner and community engagement
- Share Best Practices

Resources:

- Regional Heat Vulnerability Summary*
- Extreme Temperature Plan Template*
- VT Department of Health Resources:
 - **Hot Weather Planning Guide***
 - Landing Page: <https://www.healthvermont.gov/environment/climate-health/hot-weather>
 - School/Childcare*
 - Community Cooling Center*
 - Hot Weather Media Toolkit*
 - More resources: <https://www.healthvermont.gov/environment/climate-health/resources-community-partners>
- Cooling your home without air conditions (Henry Amistadi, Duxbury)*
- Tools:
 - Explore Climate and Health Data (Heat & Cold): <https://www.healthvermont.gov/environment/tracking/climate-and-health#heat>
 - VT Heat Vulnerability Index: <https://www.healthvermont.gov/environment/tracking/tools-community-planners#heat>
 - Vermont Environmental Disparity Index:
<https://uvm.maps.arcgis.com/apps/webappviewer/index.html?id=68a9290bde0c42529460e1b8deee8368>
 - Municipal Climate Change Vulnerability Indicators Tool: <https://climatechange.vermont.gov/mvi>
 - Transportation Resilience Tool: <https://vtrans.vermont.gov/climate/trpt>

*https://drive.google.com/drive/folders/10UrXjX8ohCHL5n86M3mX7SeEYKa2-pyP?usp=drive_link