



Central Vermont Regional Planning Commission

TRANSPORTATION ADVISORY COMMITTEE

Tuesday October 28, 2025, 6:30 p.m.

In-Person: 29 Main St, Suite 4, Montpelier VT, 05062

Join Zoom Meeting via Computer, Tablet or Smartphone:

<https://us02web.zoom.us/j/86220375669?pwd=aXFEYkNaOVYeTBORmlhd2tZV3VKdz09>

Meeting ID: 862 2037 5669- **Passcode:** 692202

Dial in via Phone: +1 929 436 2866

Find your local number: <https://us02web.zoom.us/u/kbEE5qK91g>

Download Zoom here: <https://zoom.us/download>

Agenda

- 6:30 1) Meeting Commencement
 - a) Roll Call
 - b) Adjustments to the Agenda
 - c) Public Comment
 - d) Staff Announcement
- 6:40 2) Approval of September 2025 TAC Meeting Minutes (*Enclosed; Action*)
- 6:45 3) Discussion: Regional Safety Action Plan
- 7:10 4) Discussion: FFY 26 Town Study Proposals
- 7:20 5) TAC Member Round Table
 - a) Local concerns including project updates and other issues
- 7:30 6) Adjourn

Next Meeting November 25, 2025

Persons with disabilities who require assistance or alternate arrangements to participate in programs or activities are encouraged to contact Nancy Chartrand at 802-229-0389 or chartrand@cvregion.com at least 3 business days prior to the meeting for which services are requested.

29 Main Street Suite 4 Montpelier Vermont 05602
802-229-0389 E Mail: CVRPC@CVRegion.com



Central Vermont Regional Planning Commission
Transportation Advisory Committee (TAC)

Minutes

Tuesday, September 23, 2025

Attendees:					
	Barre City			Northfield	Thomas Davis
X	Barre Town	Phil Cecchini			Jeff Schulz, Alt
X	Berlin	Robert Wernecke	X	Orange	Lee Cattaneo
	Cabot	John Cookson	X	Plainfield	Bob Atchinson (Chair)
X	Calais	David Ellenbogen	X	Roxbury	Gerry D'Amico
		Karin McNeill, Alt	X	Waitsfield	Don LaHaye
X	Duxbury	Alan Quackenbush	X		Alice Peal, Alt
				Warren	Jim Crafts
X	E. Montpelier	Adam Stanforth		Washington	Peter Carbee
		Jen Devine, Alt			
	Fayston		X	Waterbury	Mike Hedges (Vice Chair)
	Marshfield	Todd Eaton			Doug Greason, Alt
X	Middlesex	Ronald Krauth	X	Williamstown	Richard Turner
X	Montpelier	Dona Bate	X	Woodbury	Michael Gray
	Moretown	John Lynch			
			X	Worcester	Bill Arrand
Staff: Reuben MacMartin, Keith Cubbon					
Guests: Faith Dall (VTrans), Marcella Dent (VTrans), Stephen Whitaker (Public)					

Bob A. brought the meeting to order at 6:33 PM.

Roll Call

- Roll was called and a quorum was present.

Adjustments to the Agenda

- None

Public Comments

- Stephen Whitaker raised concerns about the lack of consultation between the Municipal Plan Review Committee and the Transportation Advisory Committee, particularly regarding the Country Club Road development and its impact on hospital access. He also highlighted a VHB-designed project to raise Route 2 and mitigate a railroad elevation

bottleneck, which the committee should consider. Whitaker suggested applying for CDBG DR money for planning to address potential disaster resilience issues and emergency dispatch relocation.

Staff Announcements

- CVRPC Staff provided updates on ongoing projects, including a pedestrian study in the Mad River Valley, bridge design applications for Waitsfield Meadow Road and Cabot's Bridge B7, and a new community-supported bike share model. Staff also announced the hiring of a new planner with strong technical and community development experience, who is expected to start in early October.

Approval of July 2025 Minutes and June 2025 Notes

- July Minutes were approved without modification.

Approval TPI FFY 26 Workplan

- Workplan and budget was approved following clarification of process for estimating required funding levels.
- Robert W requested that staff prepare year-on-year comparisons and expenditure tracking by program area for October meeting.
 - Staff will prepare these for TAC review.

Discussion: VTrans Better Connections Grant Program

- Faith D, the program manager for the Better Connections grant program, presented details about the joint grant initiative between three state agencies. She explained that the program supports local master planning projects to inform policy decisions and guide future investments, with funding available for multimodal connectivity, active transportation, and stormwater management projects. Faith highlighted that the grant provides up to \$67,500 in funding with a low 10% local match, and she shared examples of previous successful projects in Springfield and Fairlee. She encouraged interested communities to discuss the grant with their select boards and emphasized that the program includes significant state involvement and support.

Discussion: FFY 26 Town Study Proposals

- Staff explained that no formal proposals were available but outlined the process for selecting and funding town transportation studies. Staff proposed that the TAC establish a funding cap and selection process for projects.
 - Alice P inquired about the scope of town studies, which Staff clarified could cover a wide range of transportation issues. The group discussed the challenges

1 of securing contractors for smaller projects, with Staff noting that in-house
2 capacity was now available to conduct these studies.

- 3 ○ Alan Q requested more information for the next meeting to facilitate further
4 discussion or action items.
- 5 ○ Robert W shared historical experience of similar projects, suggesting that
6 candidate projects may be of sufficient scale to attract consultant interest. He
7 further proposed that Staff solicit proposals from towns and that the TAC
8 determine funding based on submissions.
 - 9 ▪ Staff agreed to pursue this course of action.
- 10 ○ Mike H suggested using the funds for bridge feasibility studies, similar to the
11 Stowe Street Bridge project, which Staff supported as being within the intended
12 scope.
 - 13 ▪ Alan Q expressed concerns about the high costs of bridge design and
14 construction. Alan also requested adding the Mad River Valley Active
15 Transportation Corridor study to the committee's agenda for further
16 discussion.

17 18 **TAC Member Round Table**

- 19 • Alice P reported on planning projects in the Mad River Valley:
 - 20 ○ VHB recently completed a scoping/feasibility study of the proposed Active
21 Transportation Corridor (ATC) and Mad River Path (MRP) is seeking Bicycle and
22 Pedestrian Grant funding for engineering and design of a section from Warren
23 Village into Waitsfield. MRP recently requested matching funds at a Waitsfield
24 Select Board meeting, but the board indicated that they were focused on funding
25 critical projects and building reserve funds.
 - 26 ○ Alice reiterated the critical need for replacing the Meadow Road Bridge in
27 Waitsfield, which is currently under VTrans review, and mentioned a \$250,000
28 grant to fund a 90% engineering project for replacement.

29 **Adjourn**

- 30 • At 8:00 PM Alan Q moved to adjourn Philip C 2nd the motion.
 - 31 ○ Group voted; Motion passed.

32 **Action Items**

- 33 • Staff will reach out to Montpelier regarding plans for raising US-2 at Country Club Road
34 intersection and brief TAC at October meeting
- 35 • Staff will prepare year-on-year budget comparisons and expenditure by month by
36 program area breakdown for TPI FFY 25 for next TAC meeting.

- Staff will solicit study proposals from towns for discussion and potential selection at October TAC meeting.
- Staff will prepare a briefing on Mad River Valley ATC for October TAC meeting.

Respectfully submitted by:

Reuben MacMartin, Senior Transportation Planner

DRAFT

FFY 25 Expenditure by Area by Month and Comparison to FFY 26 Budget

EXPENDITURES BY TASK	AGREEMENT AMOUNT													September	FFY 26	
		October	November	December	January	February	March	April	May	June	July	August	(Preliminary)	Total Spend	Budget	
Task 1: Admin	\$ 56,392.23	\$ 2,242.82	\$ 2,386.08	\$ 841.06	\$ 2,389.96	\$ 3,507.43	\$ 5,685.47	\$ 2,313.77	\$ 2,122.07	\$ 5,067.27	\$ 3,748.02	\$ 2,283.32	\$ 11,391.94	\$ 43,979.21	\$ 40,705.50	
Task 2: Coordination	\$ 29,237.47	\$ 1,944.98	\$ 736.38	\$ 1,810.05	\$ 2,443.51	\$ 4,077.96	\$ 1,555.90	\$ 909.75	\$ 519.39	\$ 2,169.55	\$ 2,145.20	\$ 1,896.63	\$ 1,938.95	\$ 22,148.25	\$ 21,377.60	
Task 3: Planning	\$ 100,316.80	\$ 8,007.59	\$ 5,813.07	\$ 7,896.07	\$ 7,526.85	\$ 5,452.49	\$ 8,894.06	\$ 3,766.07	\$ 4,986.43	\$ 5,436.55	\$ 5,670.57	\$ 8,050.23	\$ 16,776.11	\$ 88,276.09	\$ 142,079.87	
Task 4: Data Collection+Mgmt	\$ 55,969.51	\$ 2,784.96	\$ 432.20	\$ 967.02	\$ 1,302.56	\$ 3,002.33	\$ 883.57	\$ 523.17	\$ 1,843.99	\$ 4,314.48	\$ 7,043.63	\$ 3,627.64	\$ 1,127.93	\$ 27,853.48	\$ 46,373.47	
Task 5: Project Development	\$ 5,586.33	\$ -	\$ -	\$ 31.35	\$ -	\$ -	\$ -	\$ -	\$ -	\$ -	\$ 266.55	\$ -	\$ -	\$ 297.90	\$ 4,284.17	
Task 6: MRGP	\$ 5,670.66	\$ 66.16	\$ 110.26	\$ 176.41	\$ 246.16	\$ 22.33	\$ 111.74	\$ 243.95	\$ 67.05	\$ 212.51	\$ 82.04	\$ 82.04	\$ 41.02	\$ 1461.67	\$ 2,254.39	
SubTotal: Tasks 1-6	\$ 253,173.00	\$ 15,046.51	\$ 9,477.99	\$ 11,721.96	\$ 13,909.04	\$ 16,062.54	\$ 17,130.74	\$ 7,756.71	\$ 9,538.93	\$ 17,200.36	\$ 18,956.01	\$ 15,939.86	\$ 31,275.95	\$ 184,016.60	\$ 257,075.00	
Task 7: Bike & Ped	\$ 28,919.33	\$ -	\$ -	\$ 132.30	\$ -	\$ -	\$ 87.52	\$ 201.14	\$ 1,946.80	\$ 828.94	\$ 1,597.69	\$ 4,124.54	\$ 2,437.91	\$ 11,356.84	\$ -	
Task 8: State Rail Trail	\$													\$ -	\$ -	
Task 9: Other	\$													\$ -	\$ -	
Total All Tasks	\$ 282,092.33	\$ 15,046.51	\$ 9,477.99	\$ 11,854.26	\$ 13,909.04	\$ 16,062.54	\$ 17,218.26	\$ 7,957.85	\$ 11,485.73	\$ 18,029.30	\$ 20,553.70	\$ 20,064.40	\$ 33,713.85	\$ 195,373.43	\$ 257,075.00	

FUNDS AVAILABLE	AGREEMENT AMOUNT	October	November	December	January	February	March	April	May	June	July	August	September (Preliminary)
Task 1: Admin	\$ 56,392.23	\$ 54,149.41	\$ 51,763.33	\$ 50,922.27	\$ 48,532.31	\$ 45,024.88	\$ 39,339.41	\$ 37,025.64	\$ 34,903.57	\$ 29,836.30	\$ 26,088.28	\$ 23,804.96	\$ 12,413.02
Task 2: Coordination	\$ 29,237.47	\$ 27,292.49	\$ 26,556.11	\$ 24,746.06	\$ 22,302.55	\$ 18,224.59	\$ 16,668.69	\$ 15,758.94	\$ 15,239.55	\$ 13,070.00	\$ 10,924.80	\$ 9,028.17	\$ 7,089.22
Task 3: Planning	\$ 100,316.80	\$ 92,309.21	\$ 86,496.14	\$ 78,600.07	\$ 71,073.22	\$ 65,620.73	\$ 56,726.67	\$ 52,960.60	\$ 47,974.17	\$ 42,537.62	\$ 36,867.05	\$ 28,816.82	\$ 12,040.71
Task 4: Data Collection+Mgmt	\$ 55,969.51	\$ 53,184.55	\$ 52,752.35	\$ 51,785.33	\$ 50,482.77	\$ 47,480.44	\$ 46,596.87	\$ 46,073.70	\$ 44,229.71	\$ 39,915.23	\$ 32,871.60	\$ 29,243.96	\$ 28,116.03
Task 5: Project Development	\$ 5,586.33	\$ 5,586.33	\$ 5,586.33	\$ 5,554.98	\$ 5,554.98	\$ 5,554.98	\$ 5,554.98	\$ 5,554.98	\$ 5,554.98	\$ 5,554.98	\$ 5,288.43	\$ 5,288.43	\$ 5,288.43
Task 6: MRGP	\$ 5,670.66	\$ 5604.50	\$ 5494.24	\$ 5317.83	\$ 5071.67	\$ 5049.34	\$ 4937.60	\$ 4693.65	\$ 4626.60	\$ 4414.09	\$ 4332.05	\$ 4250.01	\$ 4208.99
SubTotal: Tasks 1-6	\$ 253,173.00	\$ 238,126.49	\$ 228,648.50	\$ 216,926.54	\$ 203,017.50	\$ 186,954.96	\$ 169,824.22	\$ 162,067.51	\$ 152,528.58	\$ 135,328.22	\$ 116,372.21	\$ 100,432.35	\$ 69,156.40
Task 7: Bike & Ped	\$ 28,919.33	\$ 28,919.33	\$ 28,919.33	\$ 28,787.03	\$ 28,787.03	\$ 28,787.03	\$ 28,699.51	\$ 28,498.37	\$ 26,551.57	\$ 25,722.63	\$ 24,124.94	\$ 20,000.40	\$ 17,562.49
Task 8: State Rail Trail	\$												
Task 9: Other	\$												
Total All Tasks	\$ 282,092.33	\$ 267,045.82	\$ 257,567.83	\$ 245,713.57	\$ 231,804.53	\$ 215,741.99	\$ 198,523.73	\$ 190,565.88	\$ 179,080.15	\$ 161,050.85	\$ 140,497.15	\$ 120,432.75	\$ 86,718.90

Pct_REMAINING	AGREEMENT AMOUNT	October	November	December	January	February	March	April	May	June	July	August	September (Preliminary)
Task 1: Admin	\$ 56,392.23	96.0%	91.8%	90.3%	86.1%	79.8%	69.8%	65.7%	61.9%	52.9%	46.3%	42.2%	22.0%
Task 2: Coordination	\$ 29,237.47	93.3%	90.8%	84.6%	76.3%	62.3%	57.0%	53.9%	52.1%	44.7%	37.4%	30.9%	24.2%
Task 3: Planning	\$ 100,316.80	92.0%	86.2%	78.4%	70.8%	65.4%	56.5%	52.8%	47.8%	42.4%	36.8%	28.7%	12.0%
Task 4: Data Collection+Mgmt	\$ 55,969.51	95.0%	94.3%	92.5%	90.2%	84.8%	83.3%	82.3%	79.0%	71.3%	58.7%	52.2%	50.2%
Task 5: Project Development	\$ 5,586.33	100.0%	100.0%	99.4%	99.4%	99.4%	99.4%	99.4%	99.4%	99.4%	94.7%	94.7%	94.7%
Task 6: MRGP	\$ 5,670.66	98.8%	96.9%	93.8%	89.4%	89.0%	87.1%	82.8%	81.6%	77.8%	76.4%	74.9%	74.2%
SubTotal: Tasks 1-6	\$ 253,173.00	94.1%	90.3%	85.7%	80.2%	73.8%	67.1%	64.0%	60.2%	53.5%	46.0%	39.7%	27.3%
Task 7: Bike & Ped	\$ 28,919.33	100.0%	100.0%	99.5%	99.5%	99.5%	99.2%	98.5%	91.8%	88.9%	83.4%	69.2%	60.7%
Task 8: State Rail Trail	\$												
Task 9: Other	\$												
Total All Tasks	\$ 282,092.33	94.7%	91.3%	87.1%	82.2%	76.5%	70.4%	67.6%	63.5%	57.1%	49.8%	42.7%	30.7%

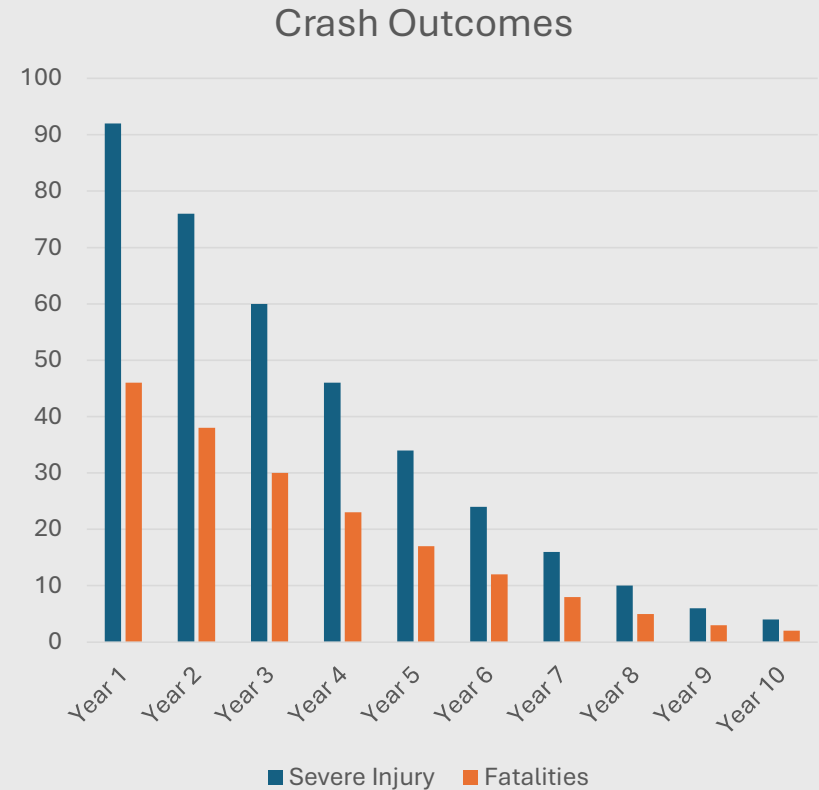
SS4A Regional Safety Action Plan and Low- Stress Network Analysis

CVRPC

28 October 2025

Objectives

- Safe town centers & rural roads
- Reduce fatalities and serious injuries
- Develop easily deployable low-cost interventions



Components

- Steering Body
- Vision Zero Commitment(s) from Leadership
- Safety Analysis
- Outreach & Participation
- Equity Considerations
- Policy & Process Interventions
- Strategy & Project Selections
- Tracking & Reporting Outcomes

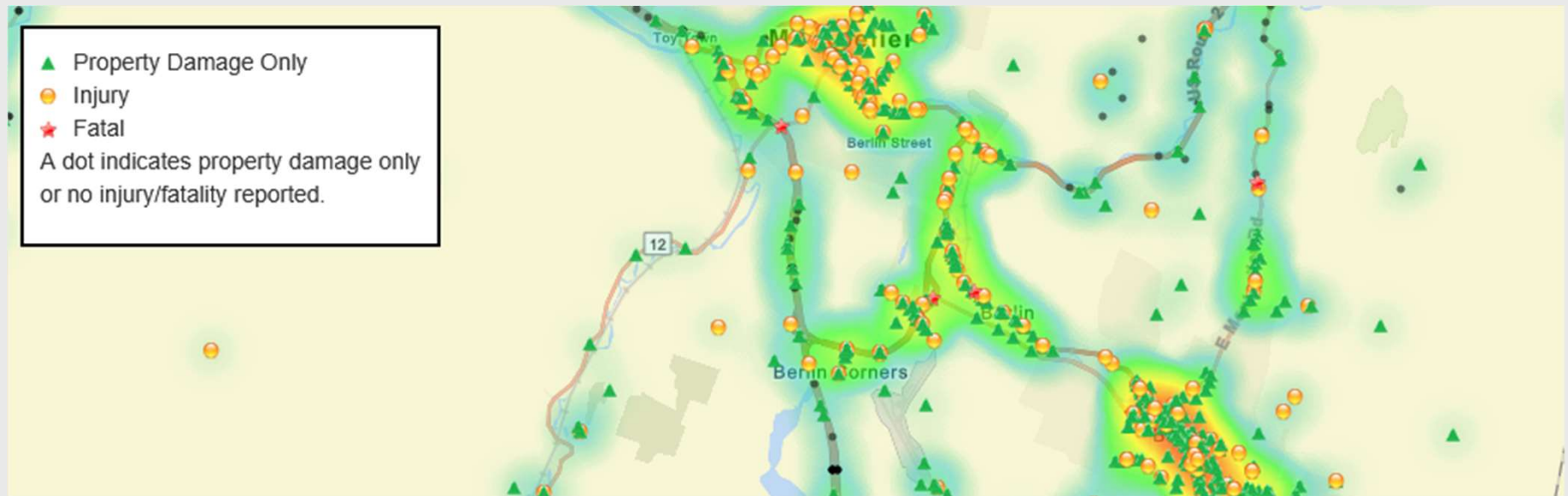


Deliverables

- Safety Action Plan Document
 - Documentation of Process and Methods
 - Regional Analysis – Synthesized from Data Work and Public Input
 - Maps, Tables, Charts, Data Appendices
 - Policy and Process Recommendations
 - Scale, Structure, Responsible Parties
 - Intersection Intervention Concept Designs
 - One per Town?
 - Exemplar/Model Designs and Where They Would be Appropriate?
 - Tracking Plan
 - Metrics, Methods, Responsible Parties

Analysis: KABCO/High-Injury Network

- State Crash Database: Location, Type, User Types, Severity, Factors



Source: Vtrans Public Crash Data Query Tool

Analysis: KABCO/High-Injury Network

- Location Scoring: $(\text{Frequency} \times \text{Severity}) / \text{Volumes} = \text{Index Score}$



Source: Seaway News (see notes for URL)

Deliverables

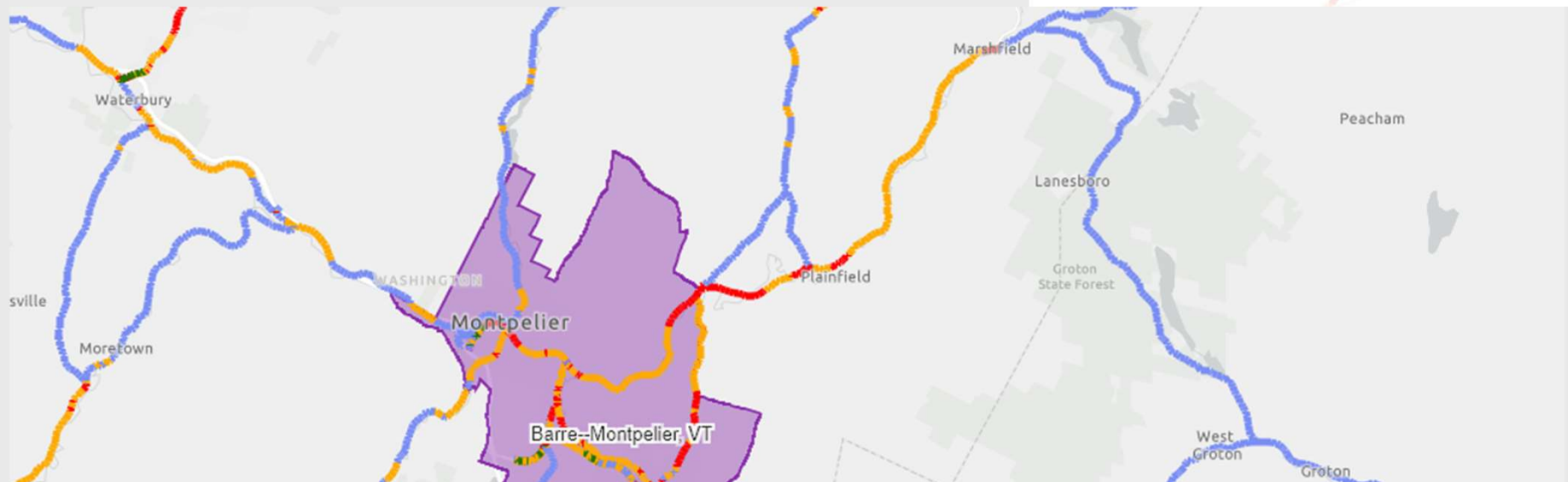
- Data & Visualization for Analyses
 - Segment Level-of-Stress and Facility Type
 - Crash Locations & Types with Heat Maps Based on Rates (ie – per 1,000 AADT)
 - Low-Stress Catchments for Destinations (eg – Eds, Meds, Gov, Groceries, etc.)
 - “Destinations Accessible From” Analysis
 - Identified Gaps with Access Premium Scores for Prioritization

Analysis: Low-Stress Network & Gaps

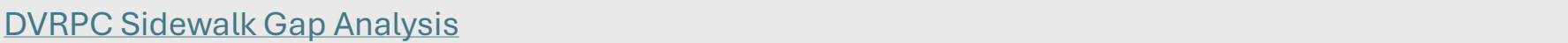
- Base Network: roads, rails, trails, utility ROWs

Bicycle Level of Comfort Scores (zoomed in)

- 1 - Welcoming to most bicyclists.
- 2 - Comfortable for most adult bicyclists.
- 3 - Comfortable for experienced and confident bicyclists.
- 4 - Uncomfortable for most bicyclists.

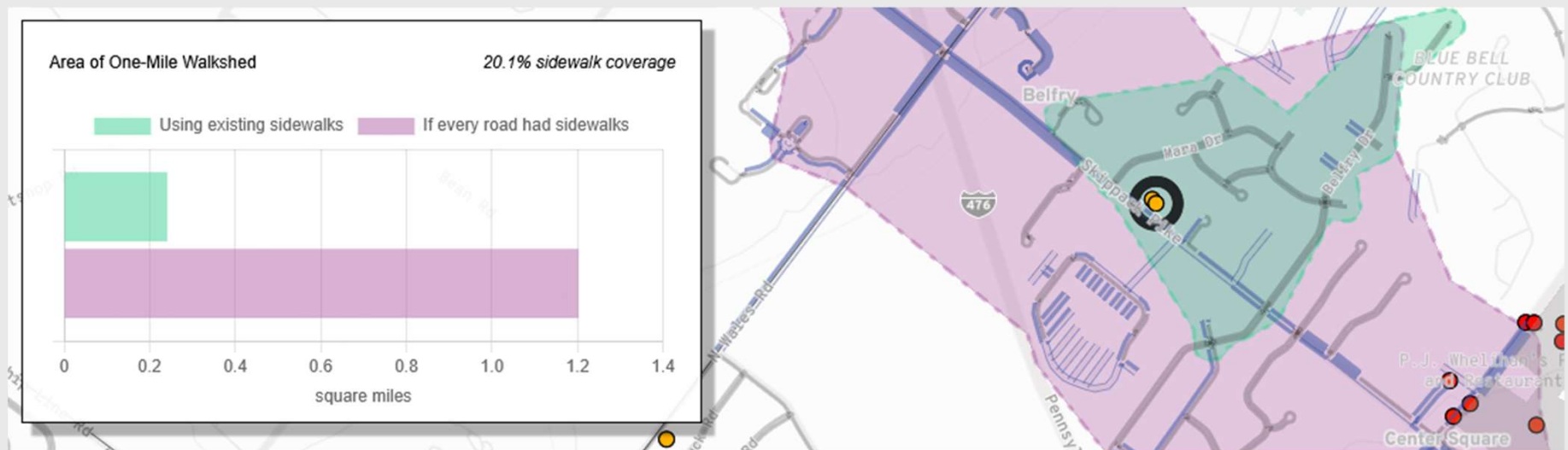


[VTrans 2018 Bicycle Level of Comfort Analysis](#)



Analysis: Low-Stress Network & Gaps

- Gap Analysis: access improvements from closing gaps



[Montgomery County Sidewalk Priorities Map](#)

Ongoing Work

- Building Town Profiles
 - Summary Tables of Existing Safety Priorities from Town Plans
 - Generating Town-Level Maps for KABCO/High Injury Network
 - Planning Town Feedback Sessions
- Working with Partners Organizations on Access Equity
 - Vtrans, VTSILC, GMT, Capstone, CVCOA, Cross-VT Trail
 - Refining and Distributing Survey Instrument
- Building Gap Prioritization Model
 - Beginning to Apply Upgraded Geospatial Analysis Tools to Network Data