

Winooski River Basin Water Quality Council Meeting

19 March 2026

Agenda

1:00 Call to order & Confirmation of Recording

1:02 Roll Call

1:05 Updates to agenda

1:10 Public Comment

1:15 Review & approve minutes from 19 February 2026 meeting (action)

1:20 Final Proposal Review (action)

- ◇ WNRCD – Basin 8 Riparian Planting O&M Adoptions – Project Development
- ◇ CVRPC – McCarty Road Culvert Replacement – Preliminary Design

1:45 Preliminary Proposal Review (discussion)

- ◇ CVRPC – Marshfield Road Stormwater Gully - Implementation

2:00 Announcements (discussion)

2:05 Adjourn

Agenda

1:00 Call to order & Confirmation of Recording

1:02 Roll Call

1:05 Updates to agenda

1:10 Public Comment

1:15 Review & approve minutes from 19 February 2026 meeting (action)

1:20 Final Proposal Review (action)

- ◇ WNRCD – Basin 8 Riparian Planting O&M Adoptions – Project Development
- ◇ CVRPC – McCarty Road Culvert Replacement – Preliminary Design

1:45 Preliminary Proposal Review (discussion)

- ◇ CVRPC – Marshfield Road Stormwater Gully - Implementation

2:00 Announcements (discussion)

2:05 Adjourn

Agenda

1:00 Call to order & Confirmation of Recording

1:02 Roll Call

1:05 Updates to agenda

1:10 Public Comment

1:15 Review & approve minutes from 19 February 2026 meeting (action)

1:20 Final Proposal Review (action)

- ◇ WNRCD – Basin 8 Riparian Planting O&M Adoptions – Project Development
- ◇ CVRPC – McCarty Road Culvert Replacement – Preliminary Design

1:45 Preliminary Proposal Review (discussion)

- ◇ CVRPC – Marshfield Road Stormwater Gully - Implementation

2:00 Announcements (discussion)

2:05 Adjourn

Agenda

1:00 Call to order & Confirmation of Recording

1:02 Roll Call

1:05 Updates to agenda

1:10 Public Comment

1:15 Review & approve minutes from 19 February 2026 meeting (action)

1:20 Final Proposal Review (action)

- ◇ WNRCD – Basin 8 Riparian Planting O&M Adoptions – Project Development
- ◇ CVRPC – McCarty Road Culvert Replacement – Preliminary Design

1:45 Preliminary Proposal Review (discussion)

- ◇ CVRPC – Marshfield Road Stormwater Gully - Implementation

2:00 Announcements (discussion)

2:05 Adjourn

Agenda

1:00 Call to order & Confirmation of Recording

1:02 Roll Call

1:05 Updates to agenda

1:10 Public Comment

1:15 Review & approve minutes from 19 February 2026 meeting (action)

1:20 Final Proposal Review (action)

- ◇ WNRCD – Basin 8 Riparian Planting O&M Adoptions – Project Development
- ◇ CVRPC – McCarty Road Culvert Replacement – Preliminary Design

1:45 Preliminary Proposal Review (discussion)

- ◇ CVRPC – Marshfield Road Stormwater Gully - Implementation

2:00 Announcements (discussion)

2:05 Adjourn

Agenda

1:00 Call to order & Confirmation of Recording

1:02 Roll Call

1:05 Updates to agenda

1:10 Public Comment

1:15 Review & approve minutes from 19 February 2026 meeting (action)

1:20 Final Proposal Review (action)

- ◇ WNRCD – Basin 8 Riparian Planting O&M Adoptions – Project Development
- ◇ CVRPC – McCarty Road Culvert Replacement – Preliminary Design

1:45 Preliminary Proposal Review (discussion)

- ◇ CVRPC – Marshfield Road Stormwater Gully - Implementation

2:00 Announcements (discussion)

2:05 Adjourn

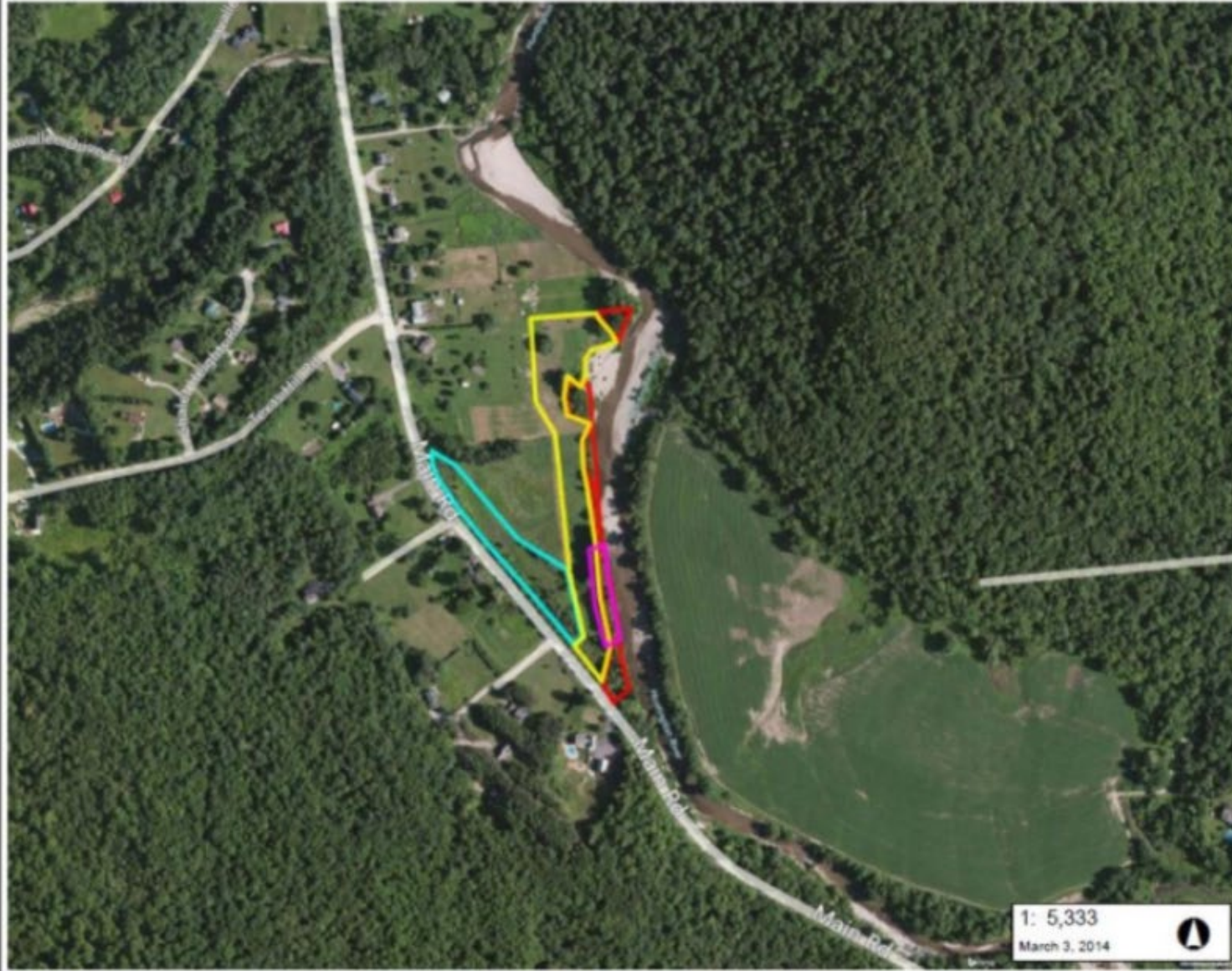
Final Proposal Review:

Riparian Buffer Planting Adoption – Project Development

- ◆ Primary Contact: Lucas Goldflus, WNRCD
- ◆ Project Type: Project Development
- ◆ Project Description: This proposal requests funding support to investigate riparian buffers planted by the WNRCD over the past decade. The sites will be reviewed for the p-reduction potential and O&M plans will be developed to extend the design life of each project.
- ◆ Project Deliverables:
 - ◆ Acres of floodplain restored: 14.25
 - ◆ P-reduction: +/- 24.6 kg / yr (p-reduction value from previous p-calculator)
- ◆ Project Budget:
 - ◆ Formula Grant: \$10,150 (no match)
 - ◆ Future Funds: TBD
- ◆ Staff Recommendation: Fund this proposal



1235 Huntington Road
 Huntington, VT



LEGEND

- Town Boundary
- Zone 1**
0.80 acres
- Zone 2**
1.35 acres
- Zone 3**
2.85 acres
- Beaver Protection Area**

NOTES

1235 Main Road, Huntington, VT 05462
 Map created using ANR's Natural Resources Atlas

271.0 0 136.00 271.0 Meters
 WGS_1984_Web_Mercator_Auxiliary_Sphere 1" = 444 Ft. 1cm = 53 Meters
 © Vermont Agency of Natural Resources THIS MAP IS NOT TO BE USED FOR NAVIGATION

DISCLAIMER: This map is for general reference only. Data layers that appear on this map may or may not be accurate, current, or otherwise reliable. ANR and the State of Vermont make no representations of any kind, including but not limited to, the warranties of merchantability, or fitness for a particular use, nor are any such warranties to be implied with respect to the data on this map.

1: 5,333
 March 3, 2014



LEGEND

Town Boundary

-  Zone 1
-  Zone 2
-  Wet area

NOTES

Map created using ANR's Natural Resources Atlas

810 Guptil Road
Waterbury, VT


1: 3,766
November 26, 2013 

191.0 0 96.00 191.0 Meters
WGS_1984_Web_Mercator_Auxiliary_Sphere 1" = 314 Ft. 1cm = 38 Meters
© Vermont Agency of Natural Resources THIS MAP IS NOT TO BE USED FOR NAVIGATION

DISCLAIMER: This map is for general reference only. Data layers that appear on this map may or may not be accurate, current, or otherwise reliable. ANR and the State of Vermont make no representations of any kind, including but not limited to, the warranties of merchantability, or fitness for a particular use, nor are any such warranties to be implied with respect to the data on this map.



LEGEND

-  Stream
-  Town Boundary

NOTES

Map created using ANR's Natural Resources Atlas
Reach ID: T2.03S1.01

445 Union Brook Road
Northfield, VT

89.0 0 44.00 89.0 Meters




WGS_1984_Web_Mercator_Auxiliary_Sphere 1" = 146 Ft. 1cm = 18 Meters
© Vermont Agency of Natural Resources THIS MAP IS NOT TO BE USED FOR NAVIGATION

DISCLAIMER: This map is for general reference only. Data layers that appear on this map may or may not be accurate, current, or otherwise reliable. ANR and the State of Vermont make no representations of any kind, including but not limited to, the warranties of merchantability, or fitness for a particular use, nor are any such warranties to be implied with respect to the data on this map.

1: 1,750
June 29, 2014 



LEGEND

-  Stream
-  Parcels (where available)
-  Town Boundary

NOTES

Map created using ANR's Natural Resources Atlas
 YELLOW=ZONE1
 PURPLE=ZONE2



1: 1,750
 October 2, 2014



89.0 0 44.00 89.0 Meters
 WGS_1984_Web_Mercator_Auxiliary_Sphere 1" = 146 Ft. 1cm = 18 Meters
 © Vermont Agency of Natural Resources THIS MAP IS NOT TO BE USED FOR NAVIGATION

DISCLAIMER: This map is for general reference only. Data layers that appear on this map may or may not be accurate, current, or otherwise reliable. ANR and the State of Vermont make no representations of any kind, including but not limited to, the warranties of merchantability, or fitness for a particular use, nor are any such warranties to be implied with respect to the data on this map.

445 Fernandez Road
 Northfield, VT



LEGEND

- Parcels (where available)
- Town Boundary

NOTES

Map created using ANR's Natural Resources Atlas



1: 1,750
 October 2, 2014



89.0 0 44.00 89.0 Meters
 WGS_1984_Web_Mercator_Auxiliary_Sphere 1" = 146 Ft 1cm = 18 Meters
 © Vermont Agency of Natural Resources THIS MAP IS NOT TO BE USED FOR NAVIGATION

DISCLAIMER: This map is for general reference only. Data layers that appear on this map may or may not be accurate, current, or otherwise reliable. ANR and the State of Vermont make no representations of any kind, including but not limited to, the warranties of merchantability, or fitness for a particular use, nor are any such warranties to be implied with respect to the data on this map.

1115 US 2
 Middlesex, VT

Agenda

1:00 Call to order & Confirmation of Recording

1:02 Roll Call

1:05 Updates to agenda

1:10 Public Comment

1:15 Review & approve minutes from 19 February 2026 meeting (action)

1:20 Final Proposal Review (action)

- ◇ WNRCD – Basin 8 Riparian Planting O&M Adoptions – Project Development
- ◇ CVRPC – McCarty Road Culvert Replacement – Preliminary Design

1:45 Preliminary Proposal Review (discussion)

- ◇ CVRPC – Marshfield Road Stormwater Gully - Implementation

2:00 Announcements (discussion)

2:05 Adjourn

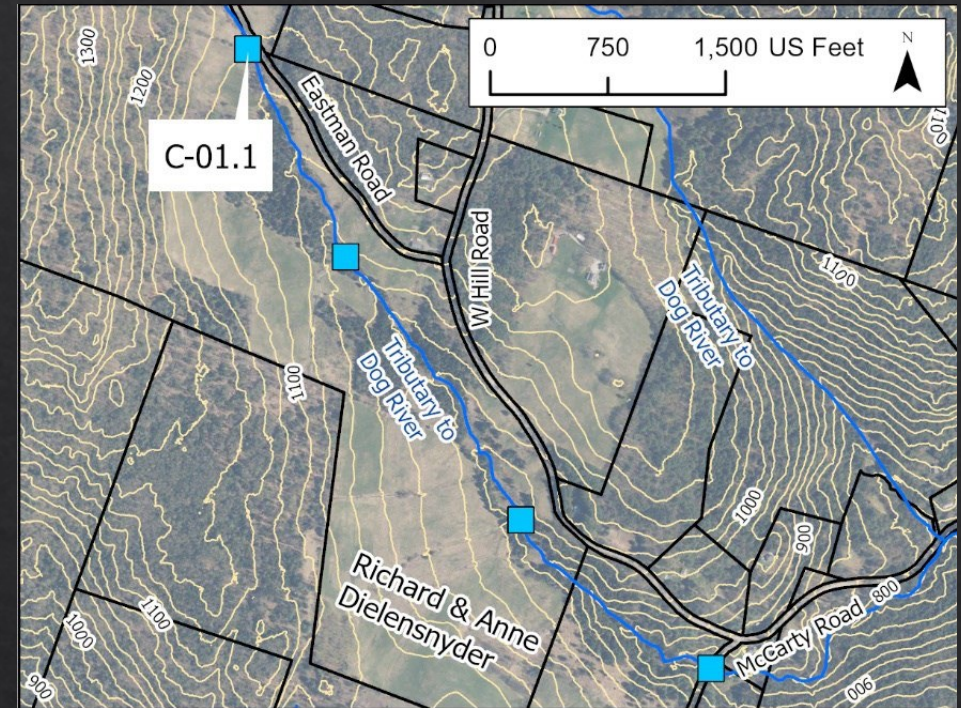
Preliminary Proposal Review: Culvert Replacement – Berlin McCarty Road

- ◆ Primary Contact: Brian Voigt, CVRPC
- ◆ Project Type: Floodplain / Stream Restoration – Preliminary Design
- ◆ Project Description: This project involves the replacement and removal of multiple stream-crossing structures along West Hill and McCarty Roads in Berlin on a headwater reach of the Dog River.
- ◆ Project Deliverables:
 - ◆ P-reduction: 16 kg / yr
- ◆ Project Budget:
 - ◆ Formula Grant: \$48,259.26 (no match)
 - ◆ Future Funds: \$400,000
- ◆ Staff Recommendation: Fund this proposal

Structure 1: Farm road culvert

Culvert Characteristics

- Material: smooth plastic
- % of bankfull width: 25%
- Height: 12"
- Width: 12"
- Length: ~30'



upstream of inlet



culvert inlet

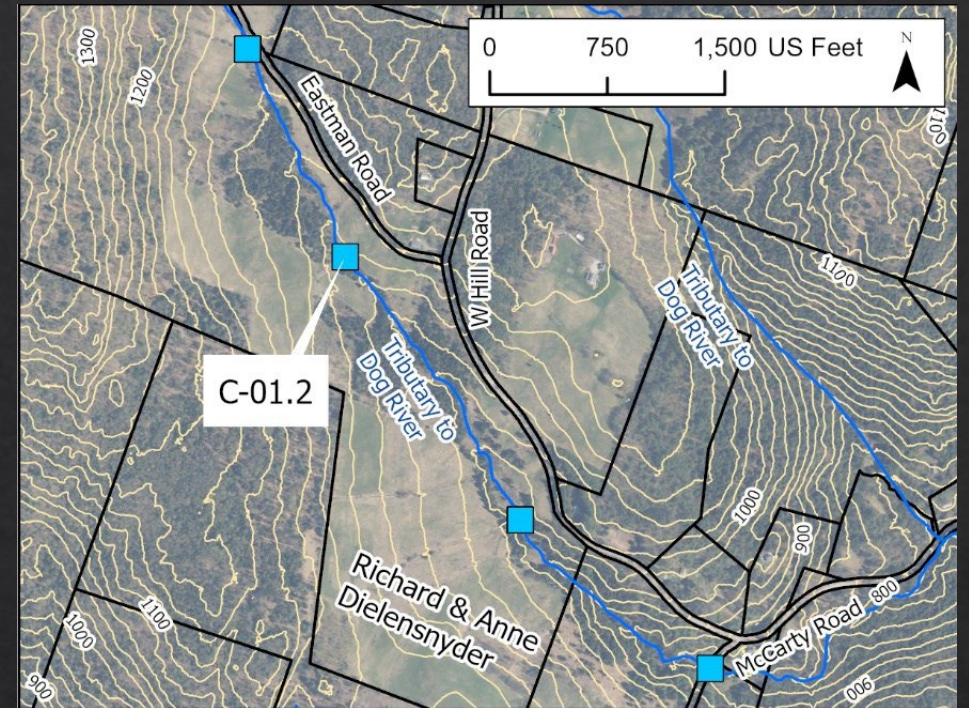


culvert outlet

Structure 2: Beaver pond culvert

Culvert Characteristics

Material: smooth plastic
% of bankfull width: 20%
Height: 24"
Width: 24"
Length: ~50'



breached dam at pond outlet



culvert inlet

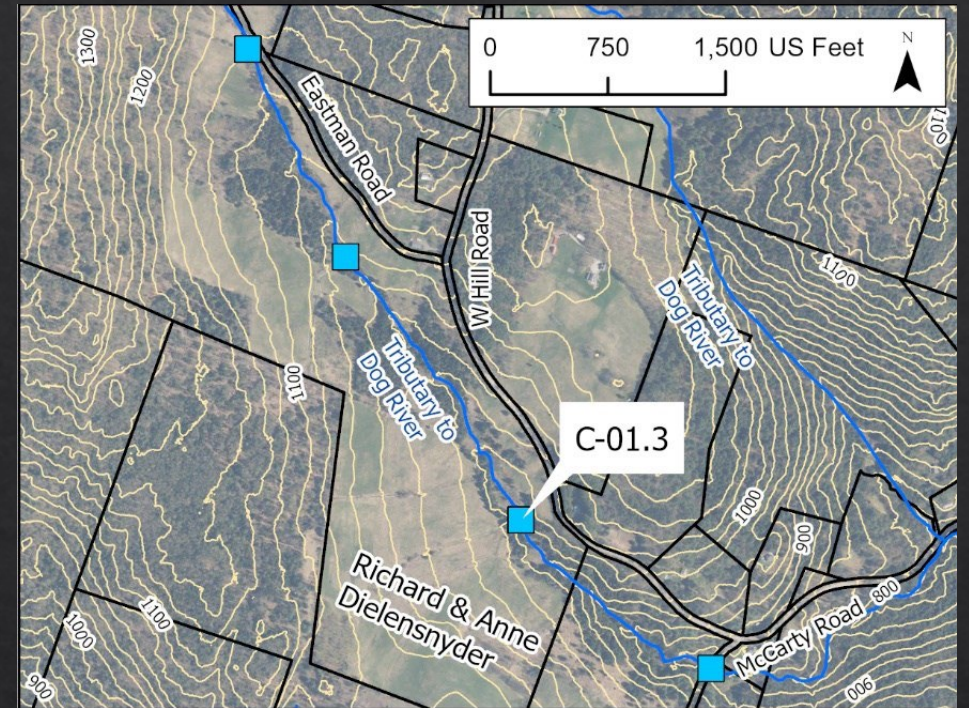


culvert outlet

Structure 3: Stone dam culvert

Culvert Characteristics

- Material: smooth plastic
- % of bankfull width: 8% - 10%
- Height: 48"
- Width: 12"
- Length: ~30'



upstream of culvert



culvert inlet



culvert outlet

Structure 4: Stone dam culvert

Culvert Characteristics

Material: corrugated metal

% of bankfull width: 25% - 33%

Height: 36"

Width: 36"

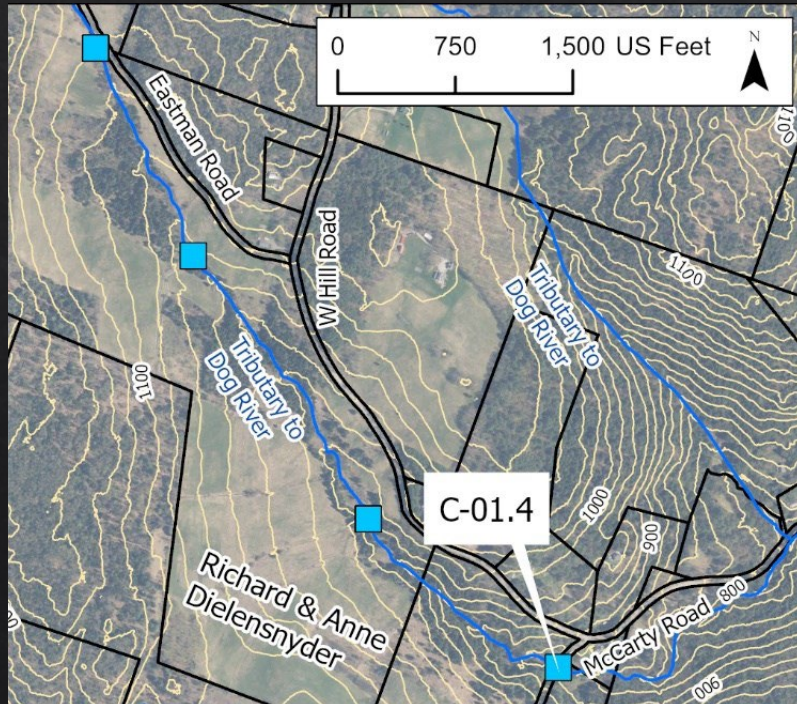
Length: ~70'



inlet of old road culvert



outlet of old road culvert



culvert inlet



culvert outlet

Final Proposal Review: Culvert Replacement – Berlin McCarty Road

Table 1- 1: Cost-Effectiveness Score

Criteria	Value
Funding Request	\$48,259
Future Funding Request	\$400,000
Total Cost	\$448,259
P-Reduction (kg / yr)	16
Design Life	10
Cost Effectiveness* (\$ / kg)	\$42,024
Cost-Effectiveness Score	0

Maximum Design-phase
Cost-Effectiveness Score = 37.5 points

*Cost Effectiveness

$$(\$ / \text{kg} / \text{yr}) = ((15 \text{ years} / \text{project design life}) * (\text{Total Cost})) / (\text{Phosphorous Reduction (kg / yr)})$$

Table 1-2: Project Risk Score

Risk Category	Points
Landowner Relations	2.5
Organizational Capacity	2.5
Operations & Maintenance	0
Permitting	2.5
Total Score	7.5

Maximum Total Project
Risk Score = 10 points

Final Proposal Review: Culvert Replacement – Berlin McCarty Road

Table 1-3: Co-Benefits Score

Co-benefit	Score	Weight	Weighted Score
Environmental Justice	0	17.78%	0
Income	0		
Race	0		
Language	0		
Ecological Benefits	3	30.44%	0.9132
Listed / Impaired Water Resource	0		
Priority Water Resource	0		
Habitat & Species Enhancement	0		
Ecosystem Services	5	23.78%	1.189
Flood Regulation	5		
Carbon Sequestration	0		
Community Building	6	15.78%	0.9468
Community Involvement	0		
Working Landscape	3		
Recreation	0		
Education	0	12.22%	0
Interpretive Signage	0		
Meetings & Workshops	0		
Total Co-benefits Score			3.049

Table 1-4: Total Project Score

Criteria	Score
Cost-Effectiveness Score	0
Project Risk Score	7.5
Design Life Score	0
Co-benefits Score	3.049
Total Project Score	10.55

Maximum Total Score = 100 points

**CWSP Staff Recommendation:
Prioritize this funding request.**

Maximum Weighted Co-Benefits Score = 10 points

Agenda

1:00 Call to order & Confirmation of Recording

1:02 Roll Call

1:05 Updates to agenda

1:10 Public Comment

1:15 Review & approve minutes from 19 February 2026 meeting (action)

1:20 Final Proposal Review (action)

- ◇ WNRCD – Basin 8 Riparian Planting O&M Adoptions – Project Development
- ◇ CVRPC – McCarty Road Culvert Replacement – Preliminary Design

1:45 Preliminary Proposal Review (discussion)

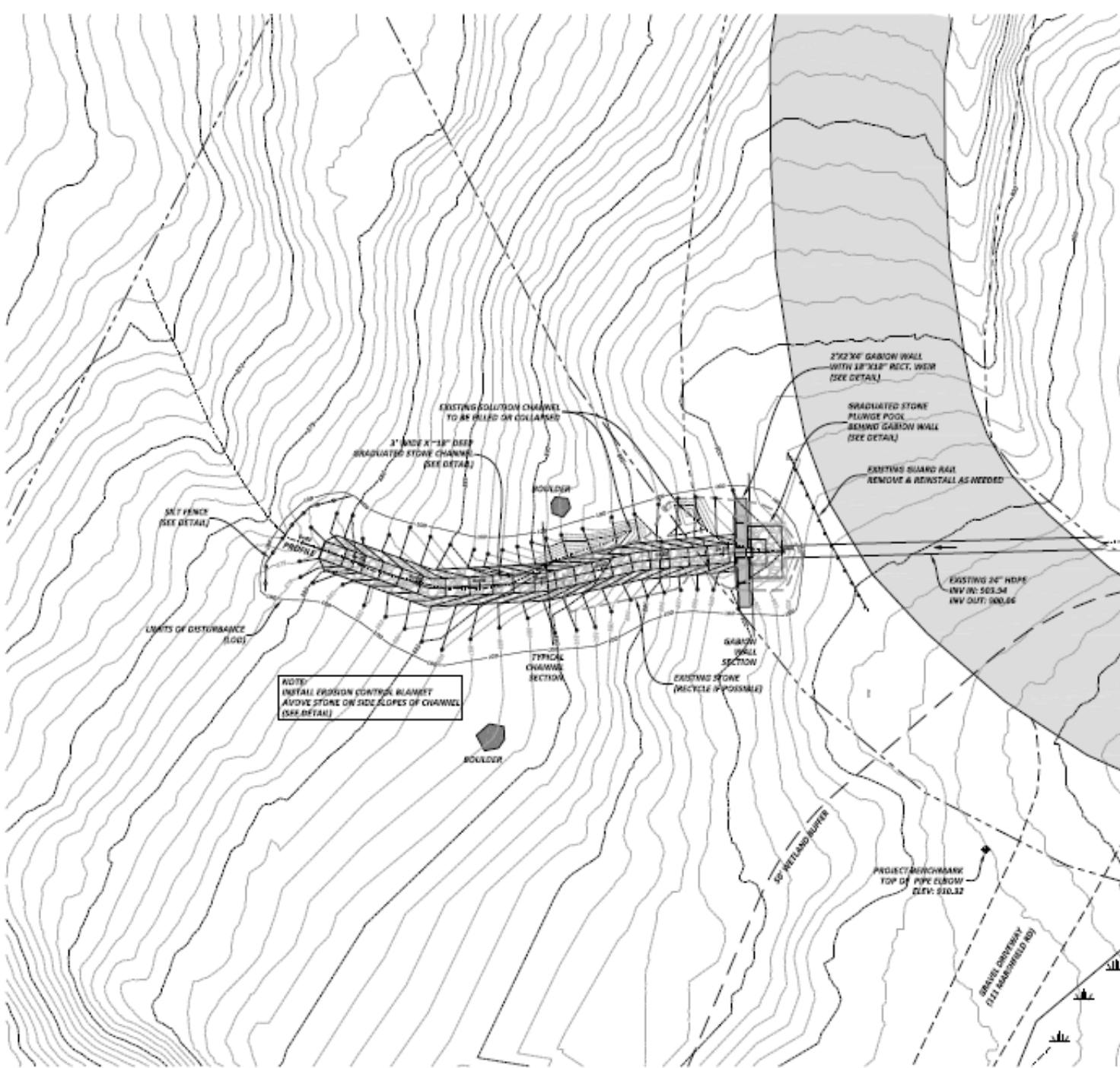
- ◇ CVRPC – Marshfield Road Stormwater Gully - Implementation

2:00 Announcements (discussion)

2:05 Adjourn

Preliminary Proposal Review: Gully Stabilization – Marshfield Road

- ◆ Primary Contact: Brian Voigt, CVRPC
- ◆ Project Type: Road / Stormwater Gully Stabilization – Implementation
- ◆ Project Description: This project involves the stabilization of a stormwater gully along Marshfield Road (Calais) to prevent long-term erosion at the site. The Final Design was completed with Formula Grant funding. The Town and adjacent landowners support project implementation.
- ◆ Project Deliverables:
 - ◆ P-reduction: 5.61 kg / yr
- ◆ Project Budget:
 - ◆ Formula Grant: \$56,226.15 (no match)



SITE PLAN



Agenda

1:00 Call to order & Confirmation of Recording

1:02 Roll Call

1:05 Updates to agenda

1:10 Public Comment

1:15 Review & approve minutes from 19 February 2026 meeting (action)

1:20 Final Proposal Review (action)

- ◇ WNRCD – Basin 8 Riparian Planting O&M Adoptions – Project Development
- ◇ CVRPC – McCarty Road Culvert Replacement – Preliminary Design

1:45 Preliminary Proposal Review (discussion)

- ◇ CVRPC – Marshfield Road Stormwater Gully - Implementation

2:00 Announcements (discussion)

2:05 Adjourn

Announcements

- ◇ **DEC Interim Phosphorus Reduction Calculator Tool - Updates (version 1.2)**
 - ◇ updates to forest truck road and skid trail erosion control calculator to use location specific loading rates;
 - ◇ added a link to access the assessment tool for completing private road erosion inventories in Survey123;
 - ◇ revised a calculator error in the strategic wood addition storage credit calculation;
 - ◇ added and improved instruction text throughout to address some frequently asked questions.
- ◇ **Clean Water Workforce Capacity Development Block Grant:** Applications due April 10, 2026.
 - ◇ Lyn Munno, WUV Director: lyn@watershedsunitedvt.org
 - ◇ Christian Pelletier, WUV Grants Manager: christian@watershedsunitedvt.org
- ◇ **Winooski Natural Resources Conservation District – 43rd Annual Tree Sale**
 - ◇ Proceeds from the sale are used to support WNRCD’s work developing and implementing on-the-ground projects that protect natural resources. Contact info@winooskinrcd.org with any questions.
 - ◇ **Order Deadline:** April 30th, 2026 at 11:59pm
 - ◇ **Pick-up Date:** May 9th, 2026 from 9am-noon
- ◇ **Winooski Natural Resources Conservation District: Act 59 Listening Session: [Register](#)**
 - ◇ **Format:** Hybrid in-person at the Yestermorrow Design/Build School (7865 Main St, Waitsfield, VT 05673) and virtually
 - ◇ **Date & Time :** Monday, March 30, 9:30 - 11:00 AM
- ◇ **CWSP Funding** - The deadline for consideration at the 16 April 2026 Winooski River Basin Water Quality Council meeting is 9 April 2026. [Schedule a meeting](#) with Brian & Lincoln for project reviews & proposal development assistance.

Agenda

1:00 Call to order & Confirmation of Recording

1:02 Roll Call

1:05 Updates to agenda

1:10 Public Comment

1:15 Review & approve minutes from 19 February 2026 meeting (action)

1:20 Final Proposal Review (action)

- ◇ WNRCD – Basin 8 Riparian Planting O&M Adoptions – Project Development
- ◇ CVRPC – McCarty Road Culvert Replacement – Preliminary Design

1:45 Preliminary Proposal Review (discussion)

- ◇ CVRPC – Marshfield Road Stormwater Gully - Implementation

2:00 Announcements (discussion)

2:05 Adjourn

Next Meeting: 16 April 2026