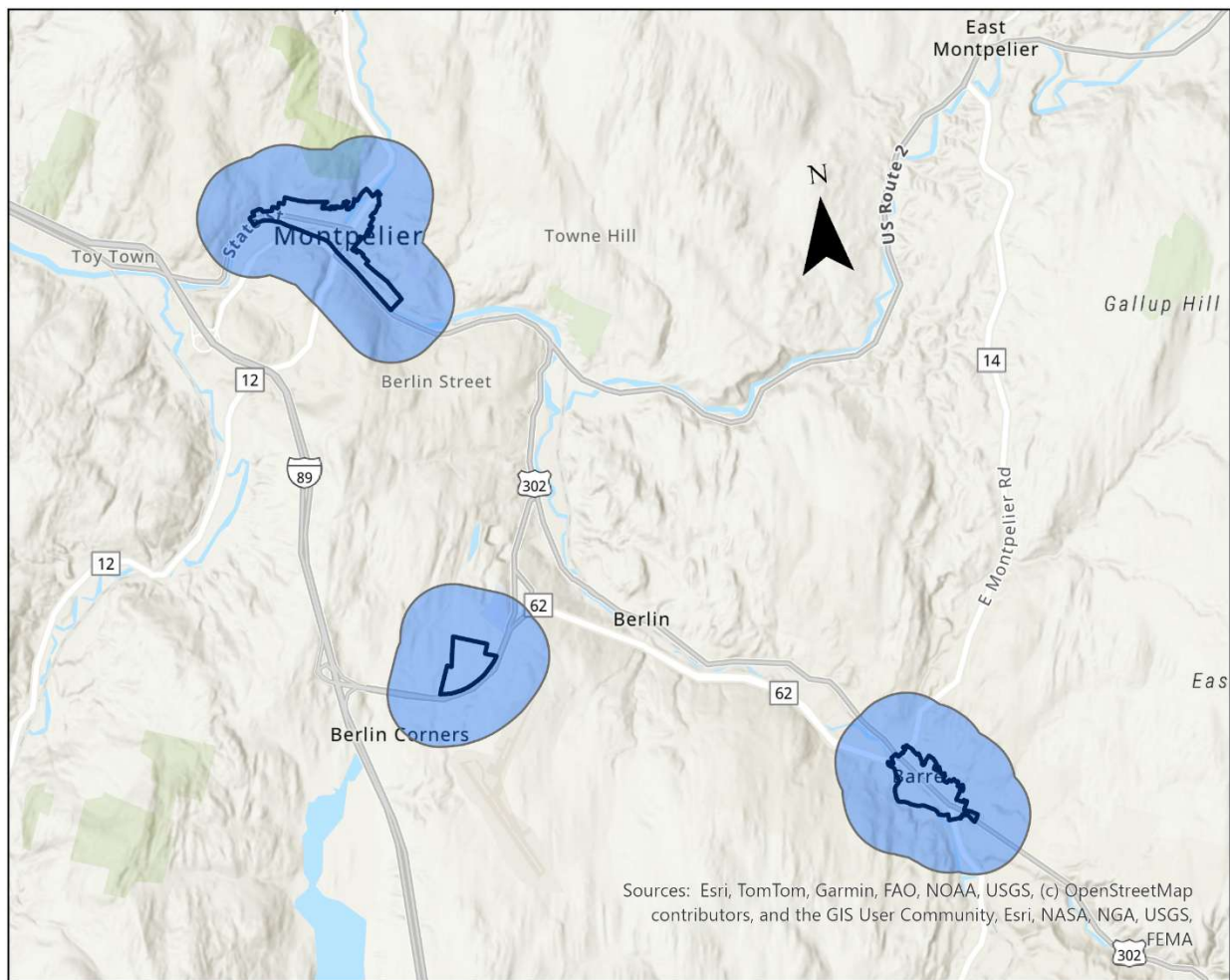


Questions in **BLUE** and answers in **ORANGE**

1. I assume the study area and project area are two separate areas? Is the study area the broader Barre City and Montpelier areas, and the project areas are specific to station locations? If this is correct is there a map of the study areas?

This is correct, project areas nest within the study area, and correspond to potential station locations. Part of the work would be identifying the project areas. The study area corresponds to the areas in blue below (1/2 mile buffers around designated centers) and the network that connects them:



2. Are engineering & construction blueprints for stations a deliverable?

No. The funding for this project only covers through conceptual design. Diagrams would be appropriate, stamped scale drawings would fall outside of covered work.