

Appendix A: Maps

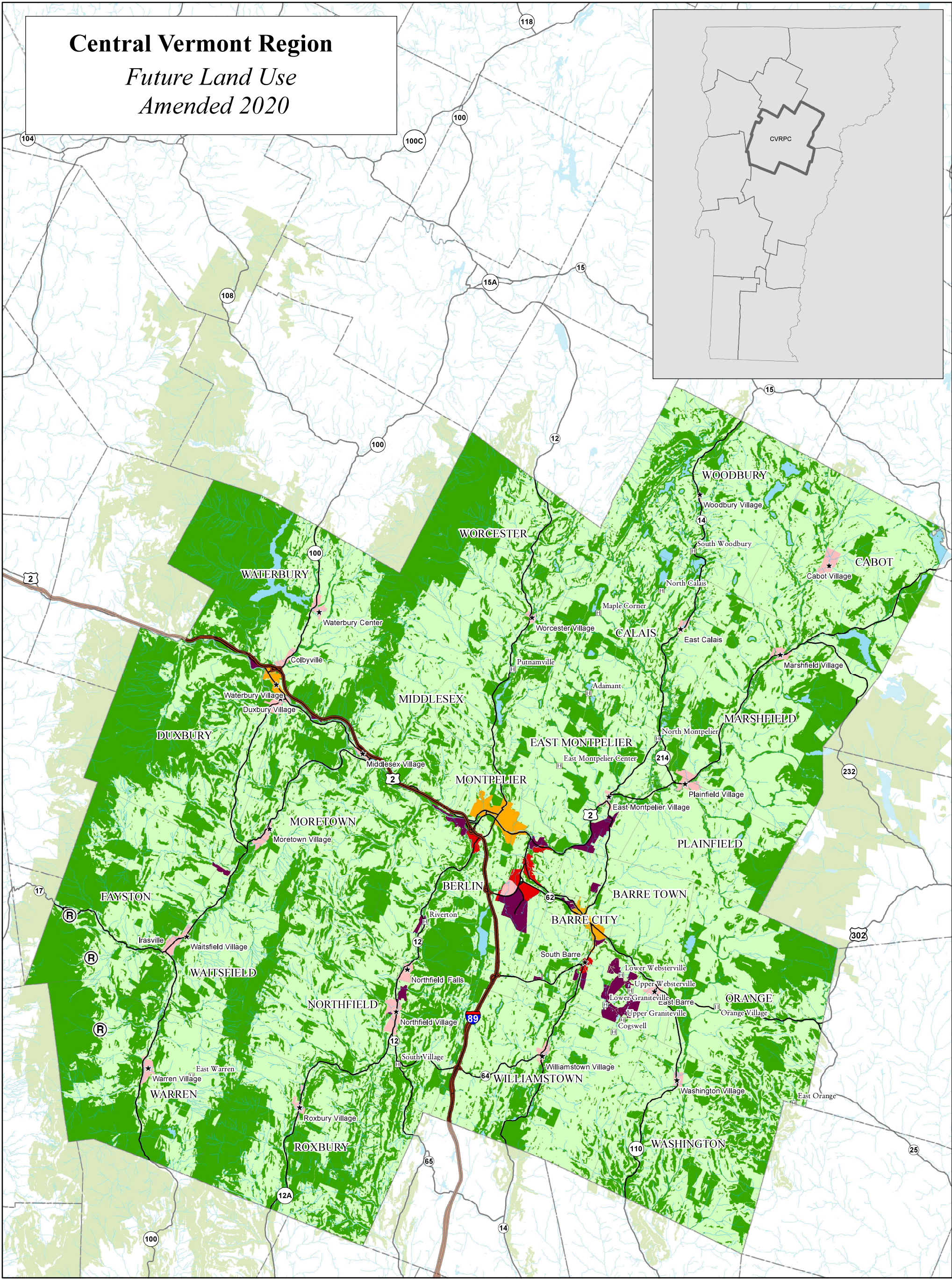
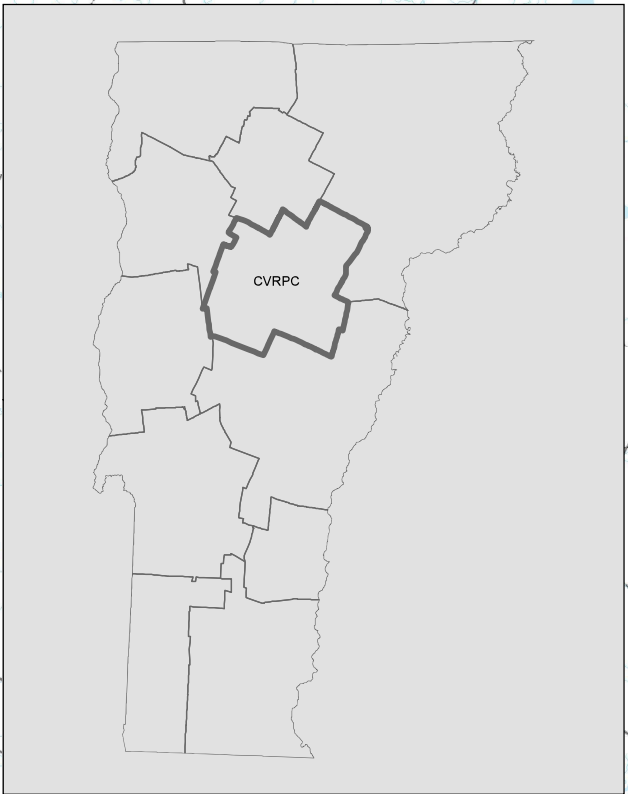
Existing Maps and Required Revisions:

<u>Map Name</u>	<u>Required Revisions</u>
Future Land Use Amended 2020*	<ul style="list-style-type: none"> • Update Future Land Use Areas
Central Vermont Topography	None
Central Vermont Primary Agricultural Soils	None
Central Vermont Natural Resources-1	None
Central Vermont Natural Resources-2	<ul style="list-style-type: none"> • Add vernal pools and river corridors
Central Vermont Natural Resources-3	None
Central Vermont Energy and Communication Map	None
Central Vermont Transportation	<ul style="list-style-type: none"> • Add new Park and Ride lots constructed since last map
Central Vermont Water Supply & Wastewater Systems	None
Central Vermont Emergency Management	None
Central Vermont Educational Facilities	<ul style="list-style-type: none"> • Add libraries and State office buildings • Update school locations to reflect recent closings
Central Vermont Public Recreational Resources	None



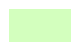






Central Vermont Region

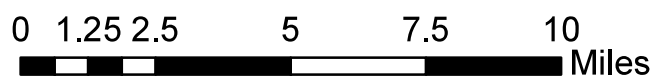
Future Land Use

Amended 2020



Future Land Use

- | | |
|---|--|
|  Resource |  Hamlets |
|  Rural |  Resort Centers |
|  Regional Centers |  Villages |
|  Town Centers | |
|  Industrial | |
|  Mixed-Use Commercial | |

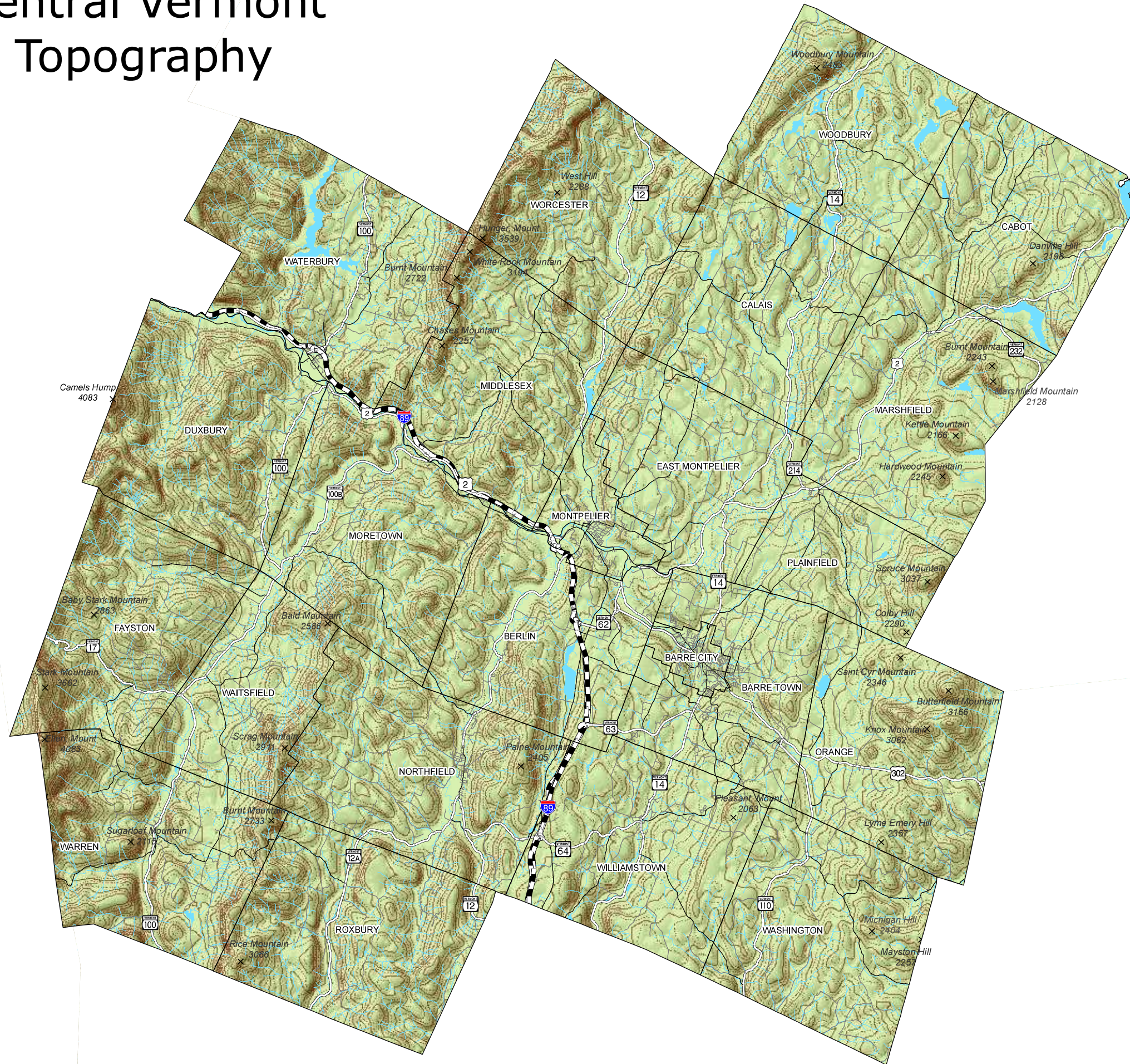


Map Adopted 10/13/2015
 Updated: 12/19/2019
 Revised: 9/10/2020
 Readopted: 10/13/2020

Data should be verified during permitting process per the provisions of the regulatory authority. This map is for general planning purposes only. This map may contain errors and omissions. See page 2-19 and 2-31 of the Land Use Element for a complete explanation.



Central Vermont Topography



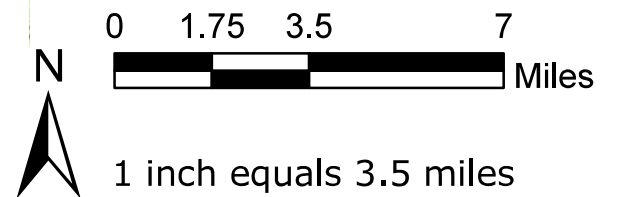
Legend

Roads:

- Class 1 Town Highway
- Class 2 Town Highway
- Class 3 Town Highway
- State Highway; US Highway
- ▬ Interstate
- Stream/River
- Surface Water
- × Summits

Contours (100 ft. intervals)

- 500 - 3900 feet (odd values)
- 600 - 4000 feet; < 500 feet (even values)

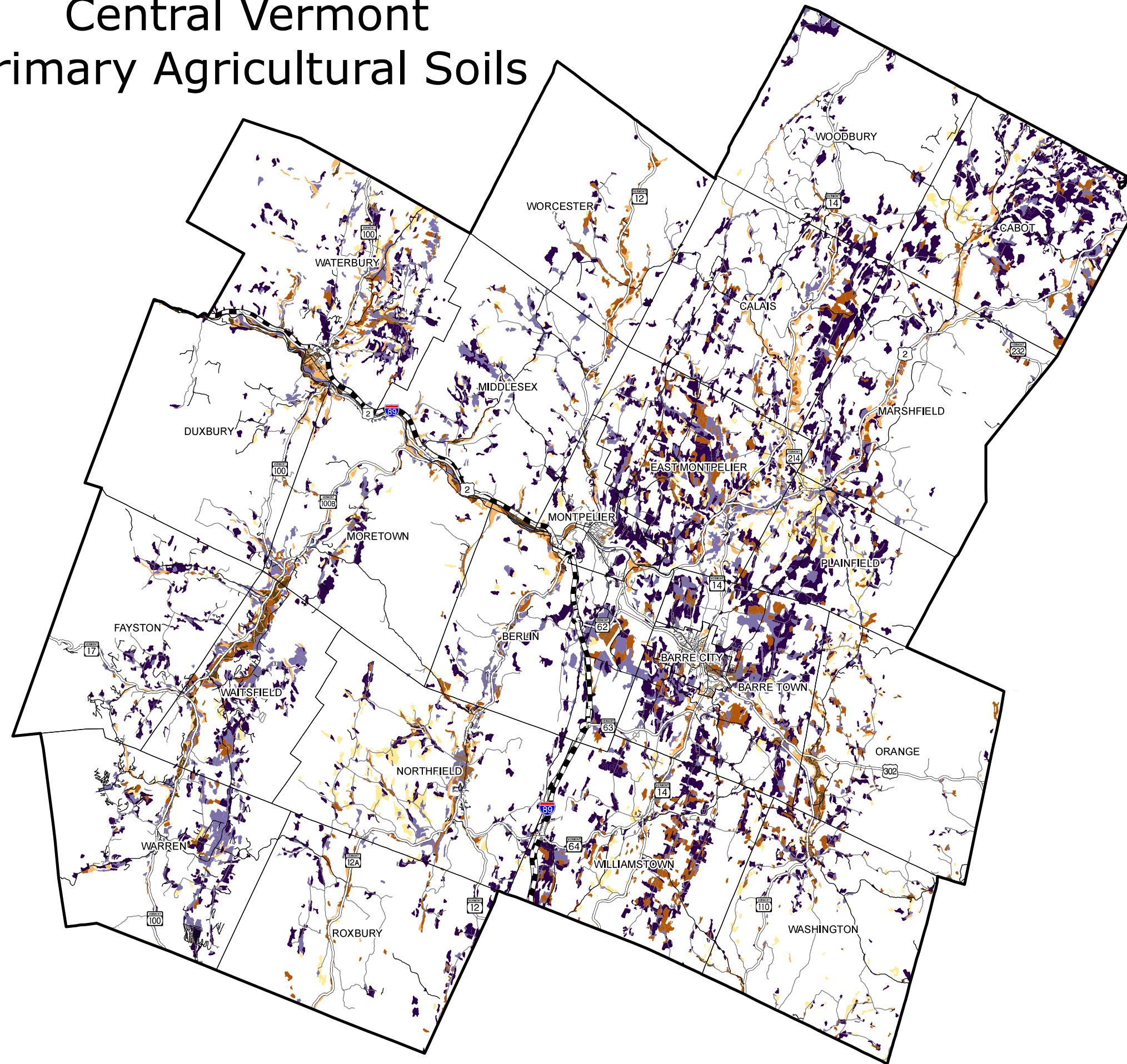


Data Source:
 Roads - VTrans, VGIS 2007
 Surface Waters - VT Hydrologic Data, VCGI 2007
 Regional Boundaries - VCGI 2006
 Topologic - USGS 1999

Created 12/19/07 by CVRPC
 M:/Region/RegionalPlan_Update2008/GIS/
 Maps/Topography_HillShade.mxd

Data is only as accurate as the original source materials. This map is for planning purposes. This map may contain errors and omissions.

Central Vermont Primary Agricultural Soils



Legend

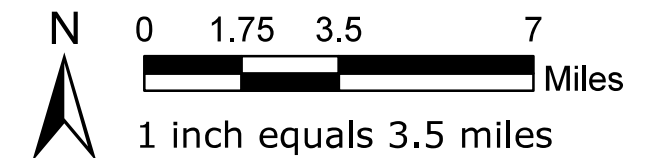
Agricultural Value

1 2 3 4 5 6 7

[<--- Few Limitations --- Greater Limitations --->]

Roads:

- Class 1 Town Highway
- Class 2 Town Highway
- Class 3 Town Highway
- State Highway; US Highway
- ▬ Interstate

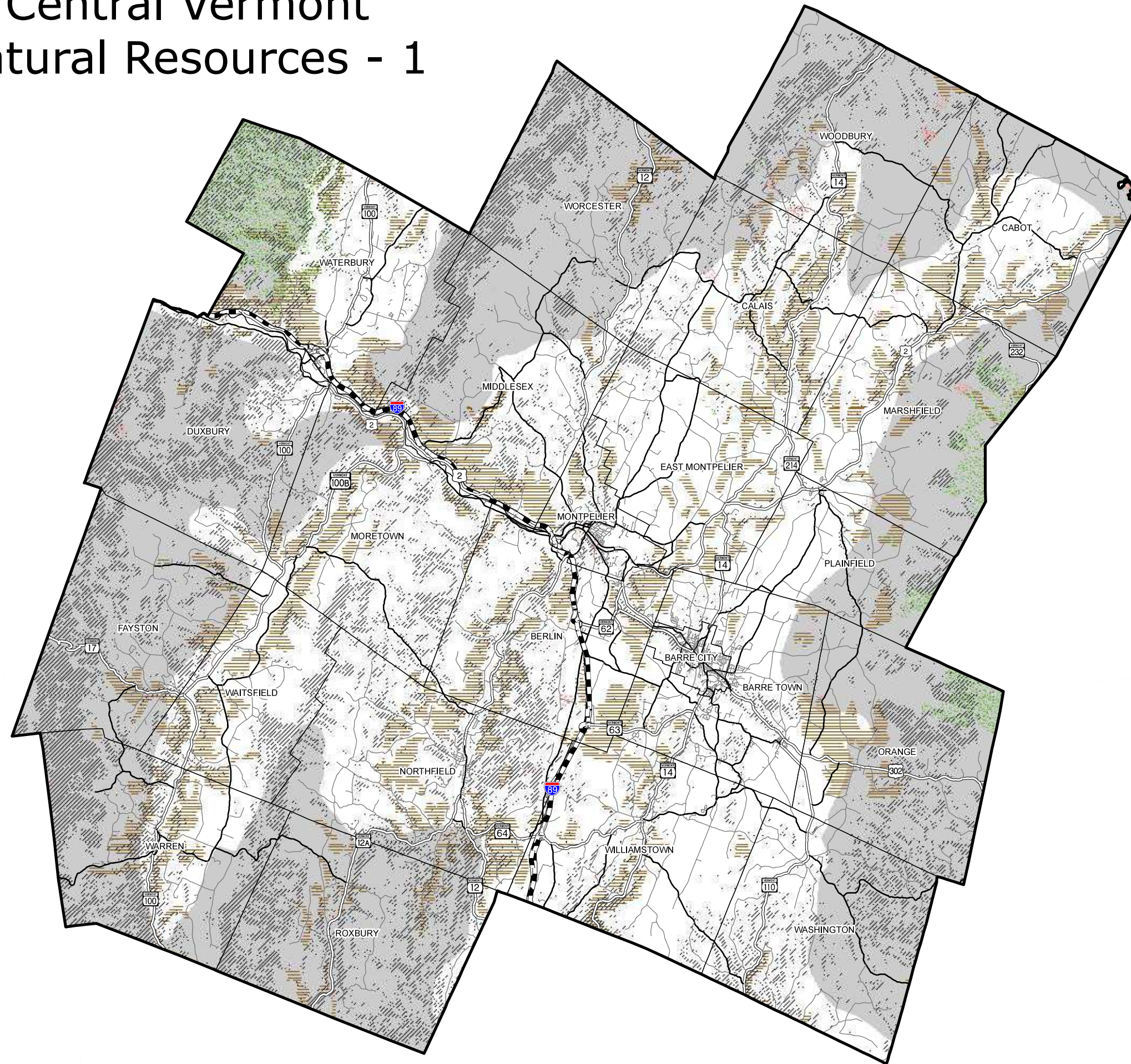


Data Source:
 Soils - ANR 2004
 Roads - VTrans, VGIS 2007
 Regional Boundaries - VCGI 2006

Created 12/27/07 by CVRPC
 M:/Region/RegionalPlan_Update200/GIS/
 Maps/Agricultural Soils.mxd

Data is only as accurate as the original source materials. This map is for planning purposes. This map may contain errors and omissions.

Central Vermont Natural Resources - 1

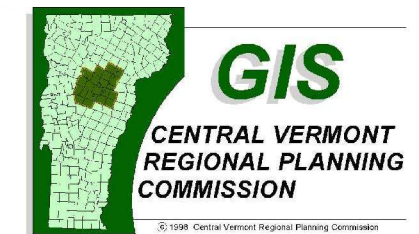
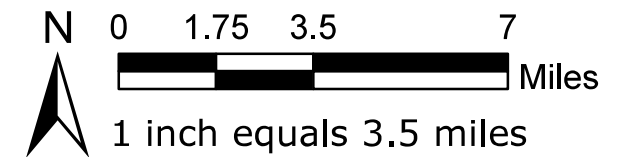


Legend

- Natural Communities
- Endangered Species
- Deer Wintering Habitat
- Bear Reproduction Zones
- 25% Slope or Greater

Roads:

- Class 1 Town Highway
- Class 2 Town Highway
- Class 3 Town Highway
- State Highway; US Highway
- Interstate

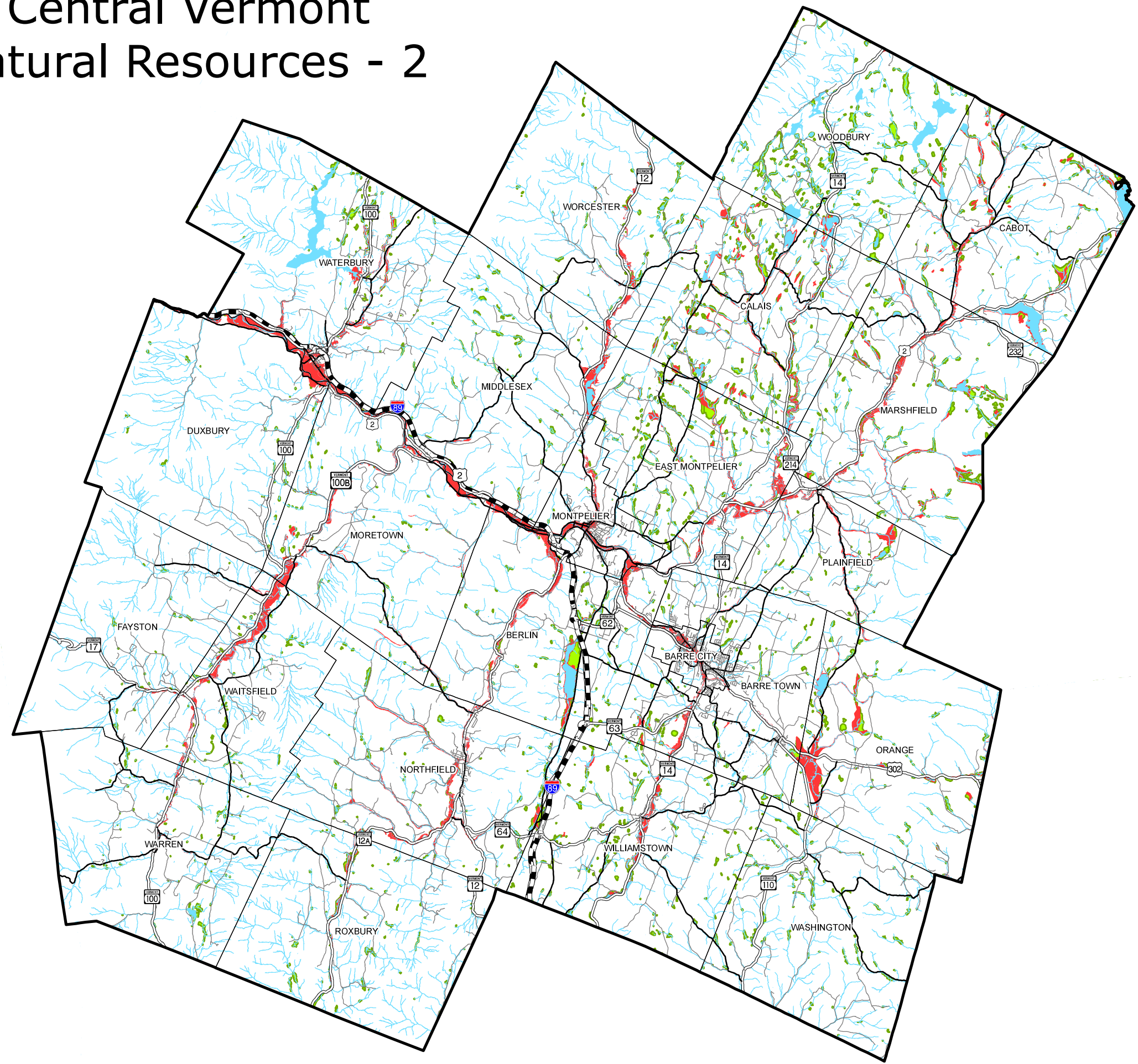


Data Source:
Deer Yards - ANR
Bear Habitat - ANR
Slopes - ANR
Roads - VTrans, VGIS 2007
Regional Boundaries - VCGI 2006

Created 12/27/07 by CVRPC
M:/Region/RegionalPlan_Update200/GIS/
Maps/Natural Resources 1.mxd

Data is only as accurate as the original source materials. This map is for planning purposes. This map may contain errors and omissions.

Central Vermont Natural Resources - 2

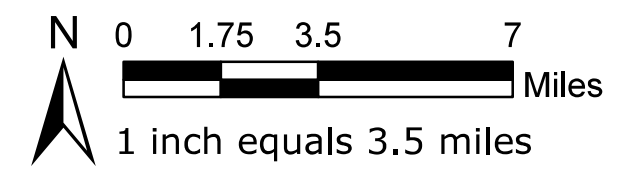


Legend

- Fema Floodplain
- Wetlands
- Streams/Rivers
- Surface Water

Roads:

- Class 1 Town Highway
- Class 2 Town Highway
- Class 3 Town Highway
- State Highway; US Highway
- Interstate






Data Source:
 Wetlands - ANR
 FEMA Floodplain - FEMA
 Roads - VTrans, VGIS 2007
 Regional Boundaries - VCGI 2006

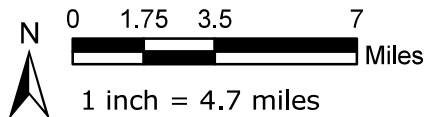
Created 3/10/08 by CVRPC
 M:/Region/RegionalPlan_Update200/GIS/
 Maps/Natural Resources 2.mxd

Data is only as accurate as the original source materials. This map is for planning purposes. This map may contain errors and omissions.

Central Vermont Natural Resources - 3

Legend

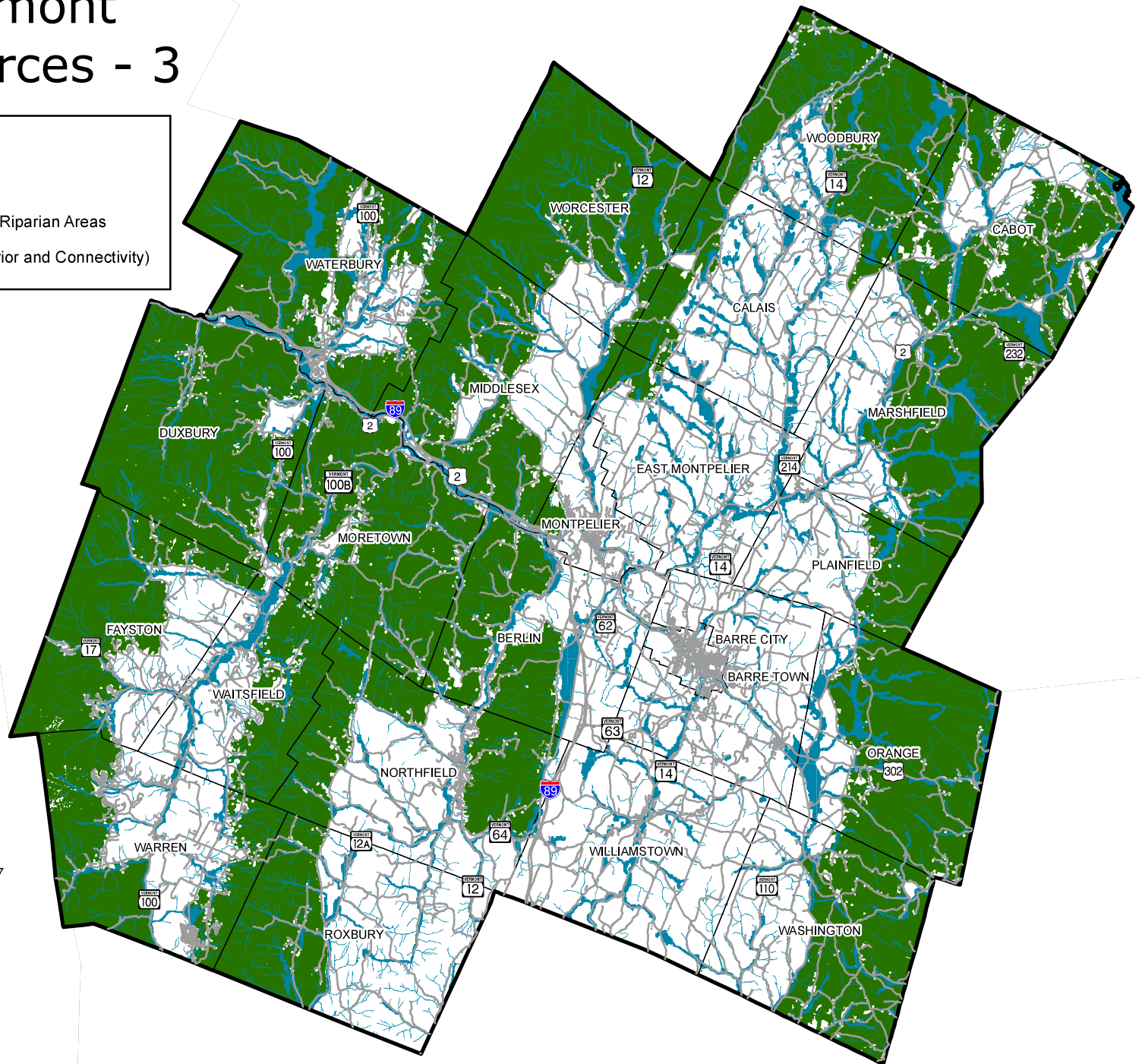
-  Roads
-  Highest Priority Surface Water and Riparian Areas
-  Highest Priority Forest Blocks (Interior and Connectivity)



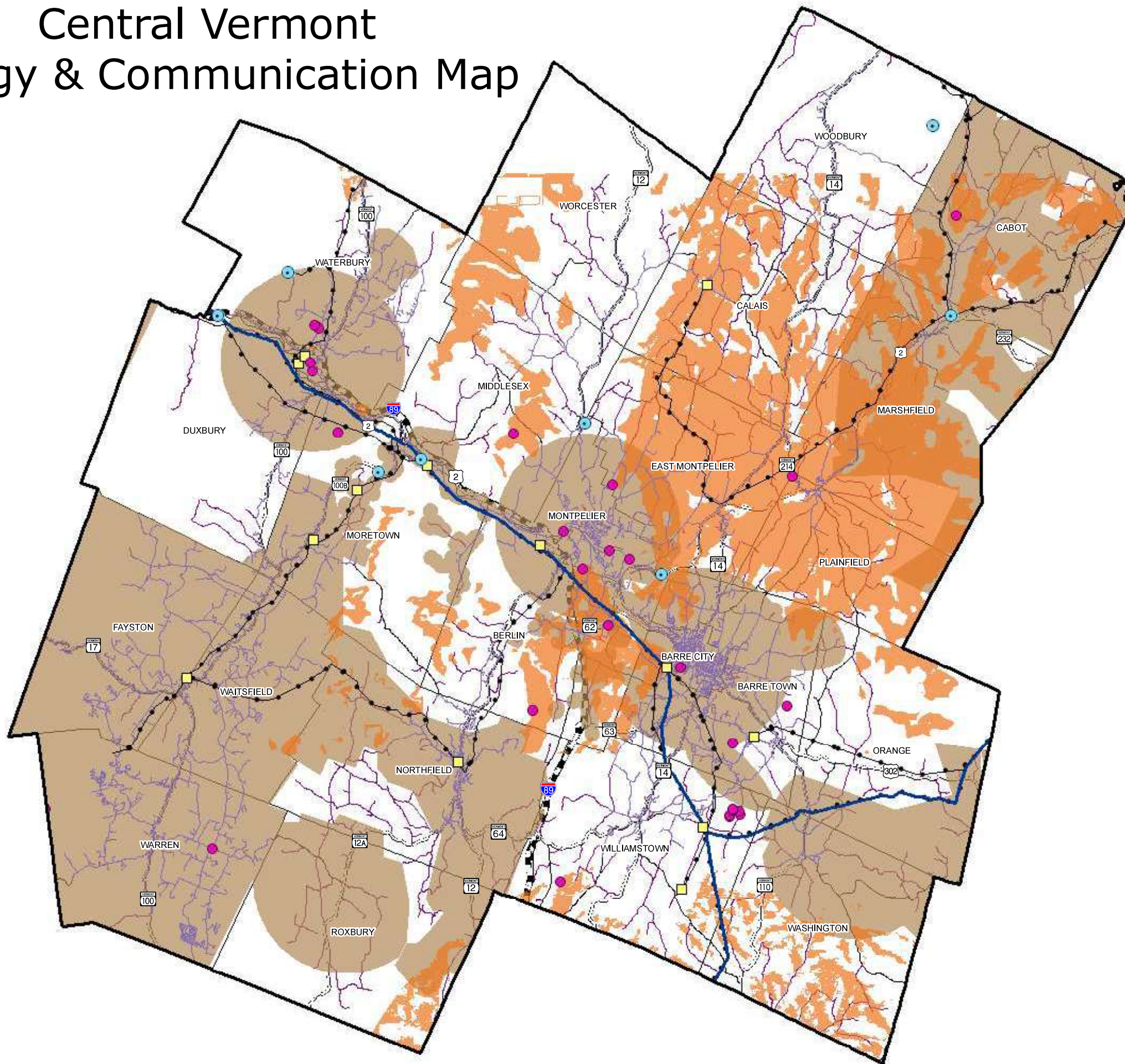
Data Source:
 Surface Water and Riparian Areas: ANR Biofinder 2017
 Forest Blocks: ANR Biofinder 2017
 Roads - VTrans, 2017
 Regional Boundaries - VCGI 2006

Created 1/18/18 by CVRPC
 M/Regional Plan/2016 Regional Plan/
 2017 Amendment/Land Use/Natural_Resources3.mxd

Data is only as accurate as the original
 source materials. This map is for planning
 purposes. This map may contain errors
 and omissions.



Central Vermont Energy & Communication Map



Legend

Energy Generation

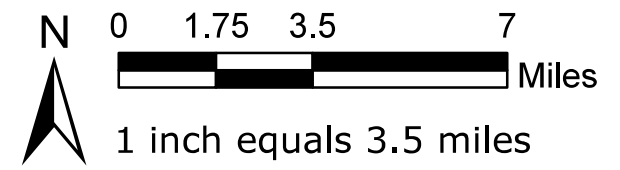
- Substations
- Hydro Plants

Communications

- Cell, Radio, and TV Towers
- Cable TV Lines
- Cable Modem Lines
- Wireless Service Area
- DSL Service Area
- Both Service Areas
- VELCO Transmission Lines
- Electrical Distribution Lines

Roads:

- Class 1 Town Highway
- Class 2 Town Highway
- Class 3 Town Highway
- State Highway; US Highway
- Interstate

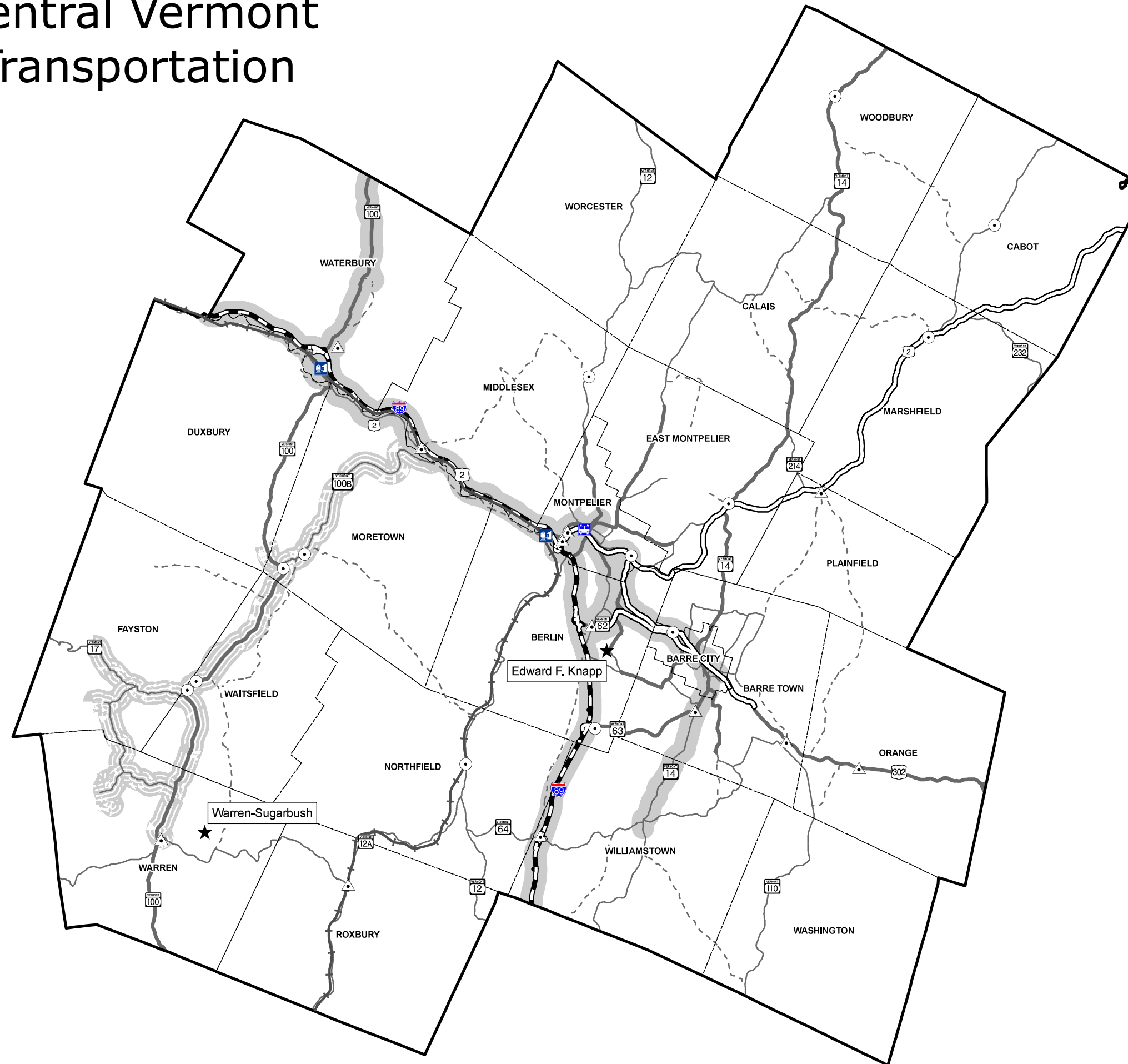


Data Source:
 Telecommunication: Data obtained from VCGI, ANR, and CVRPC
 Roads - VTrans, VGIS 2007
 Tourism Trails: ANR, 2007
 Regional Boundaries - VCGI 2006

Created 2/25/08 by CVRPC
 M:/Region/RegionalPlan_Update2008/GIS/Maps/Energy & Communications.mxd

Data is only as accurate as the original source materials. This map is for planning purposes. This map may contain errors and omissions.

Central Vermont Transportation



Legend

Functional Class

- Interstate/Expressway
- Principal Arterial
- Minor Arterial
- Major Collector
- Minor Collector

Bus Service Areas

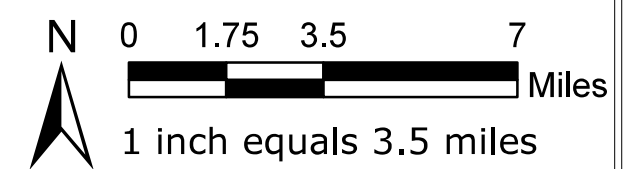
- Year Round
- Seasonal
- Vermont Transit Stop

Park and Ride Lots

- Existing Lots
- Future Lots

Amtrak Route

- Central Vermont
- Amtrak Stops

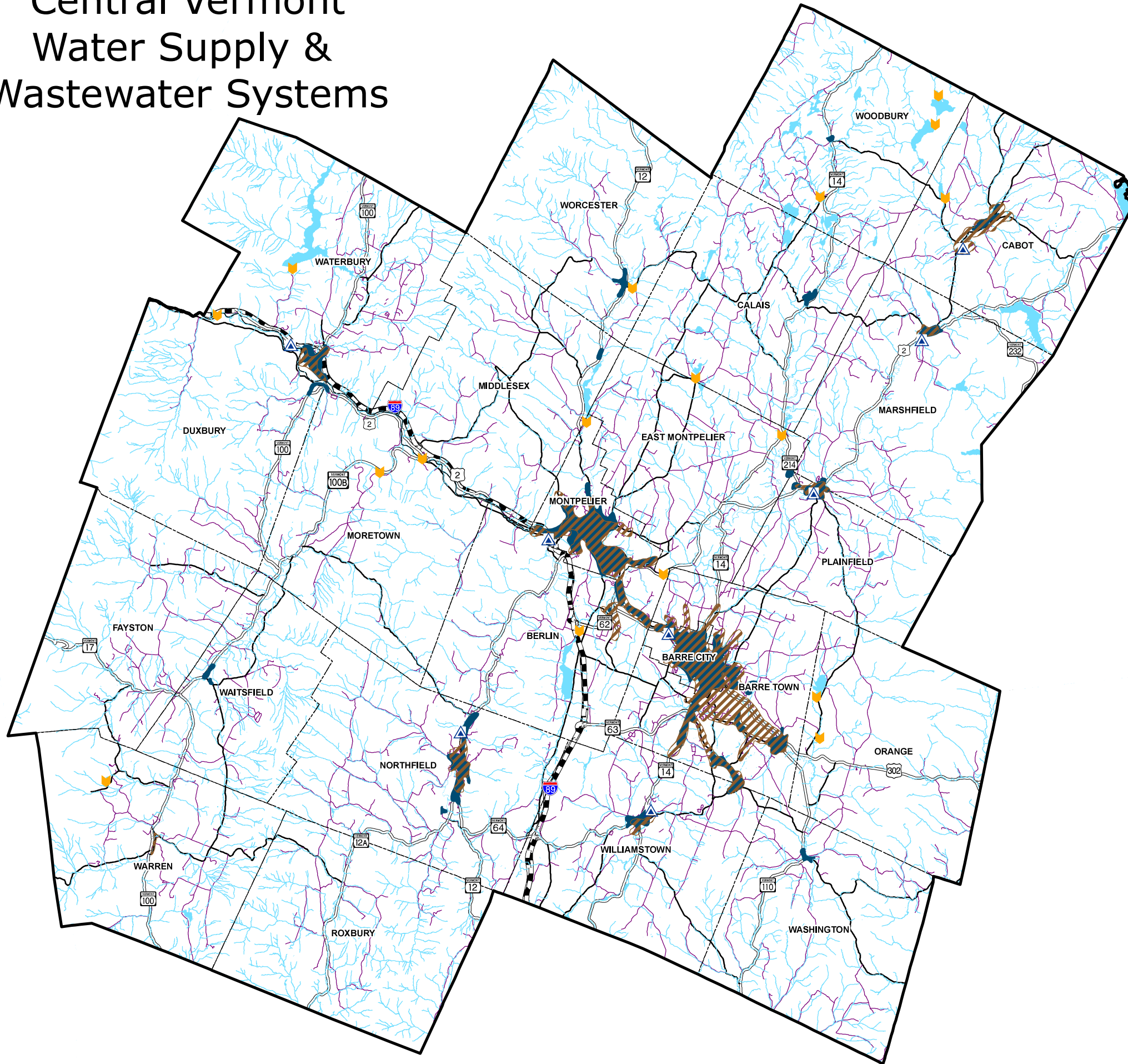


Data Source:
Roads - VTrans, VGIS 2007
Regional Boundaries - VCGI 2006

Created 3/10/08 by CVRPC
M:/Region/RegionalPlan_Update200/GIS/
Maps/Transportation.mxd

Data is only as accurate as the original source materials. This map is for planning purposes. This map may contain errors and omissions.

Central Vermont Water Supply & Wastewater Systems



Legend

Facilities

- Public Wastewater Treatment Plants

Sewer & Water Service Areas

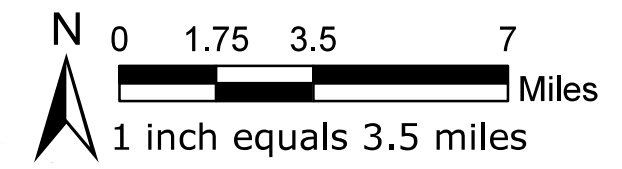
- Public Wastewater
- Public Water Supply

Dams

- In Service (Water Storage, Supply, & Flood Control)

Roads

- Class 1 Town Highway
- Class 2 Town Highway
- Class 3 Town Highway
- State Highway; US Highway
- Interstate
- Surface Water
- Stream/River

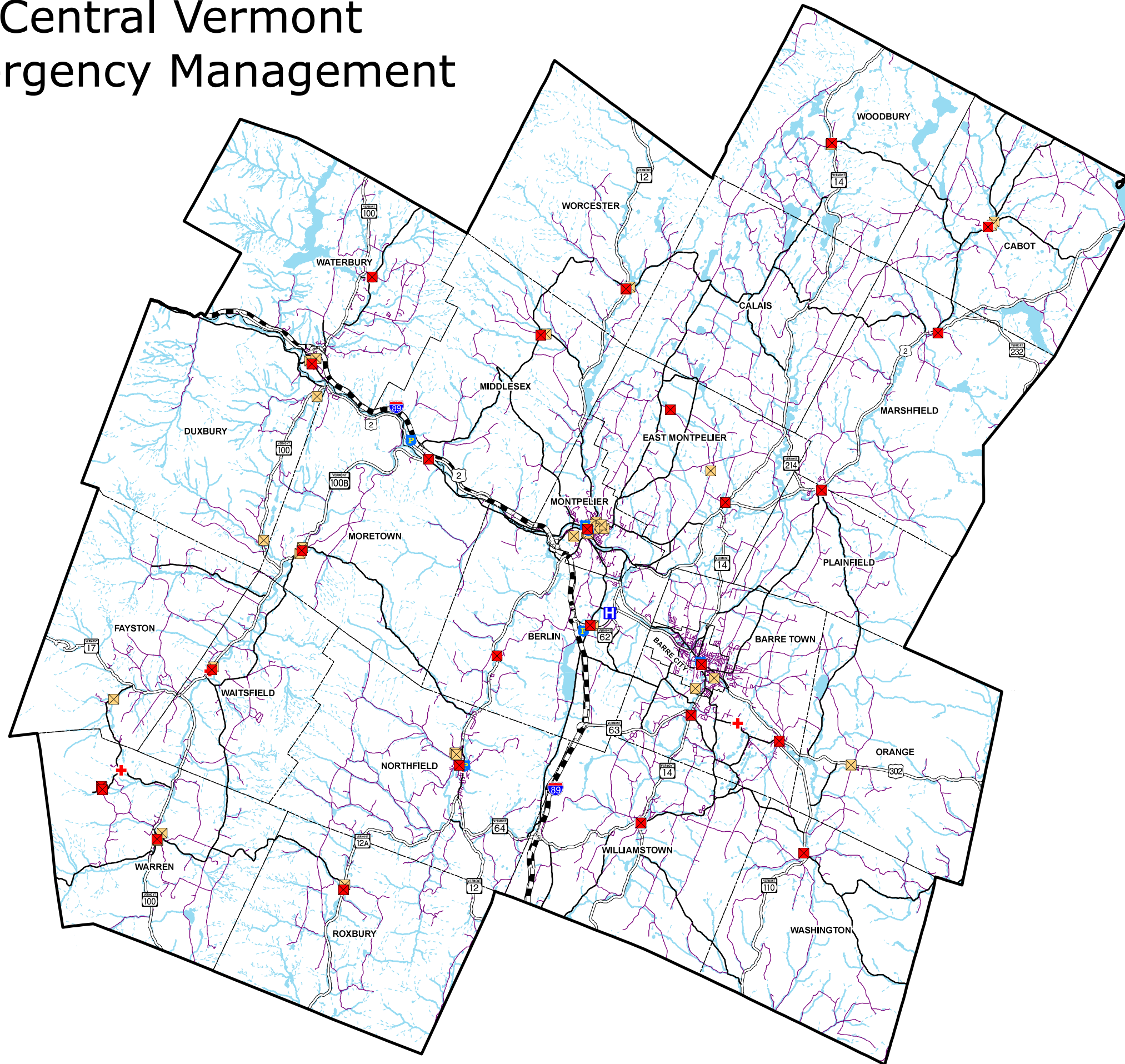


Data Source:
Roads - VTrans, VGIS 2007
Regional Boundaries - VCGI 2006

Created 3/10/08 by CVRPC
M:/Region/RegionalPlan_Update200/GIS/
Maps/Wastewater_Systems.mxd

Data is only as accurate as the original source materials. This map is for planning purposes. This map may contain errors and omissions.

Central Vermont Emergency Management



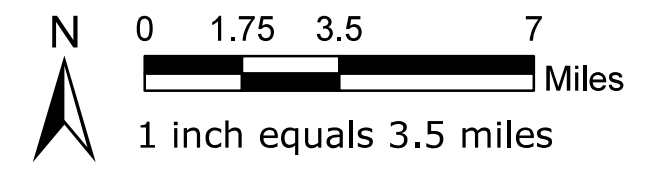
Legend

Emergency Operation Facilities

- Fire Station
- 👮 Police
- 🏥 Hospital
- ⛑ EMT Station Locations
- 🏠 Emergency Shelters

Roads:

- Class 1 Town Highway
- Class 2 Town Highway
- Class 3 Town Highway
- State Highway; US Highway
- Interstate

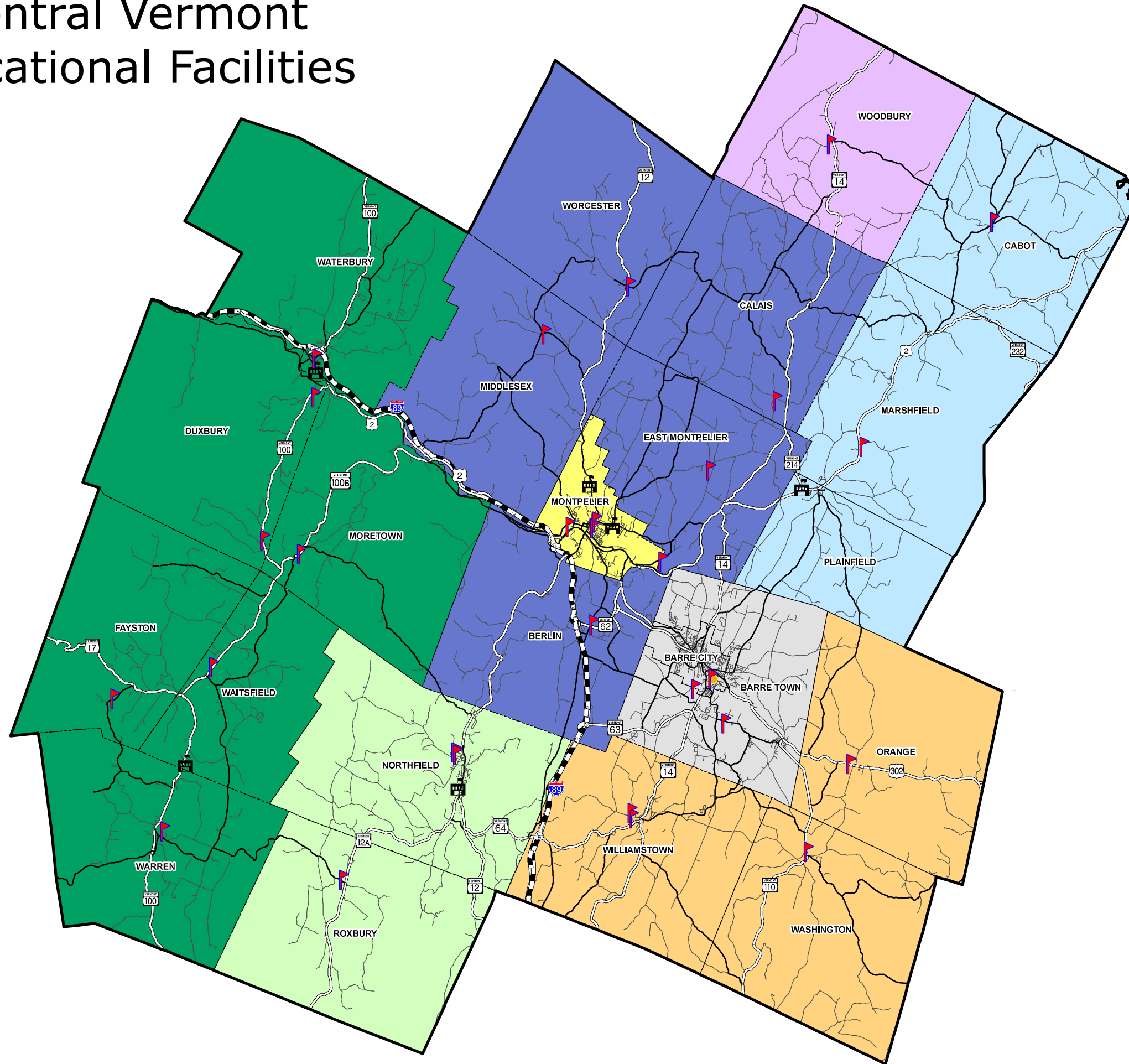


Data Source:
 Emergency Operations Facilities - CVRPC, 2007
 Roads - VTrans, VGIS 2007
 Regional Boundaries - VCGI 2006

Created 2/29/08 by CVRPC
 M:/Region/RegionalPlan_Update2008/GIS/
 Maps/Emergency_Management.mxd

Data is only as accurate as the original source materials. This map is for planning purposes. This map may contain errors and omissions.

Central Vermont Educational Facilities



Legend

School Districts

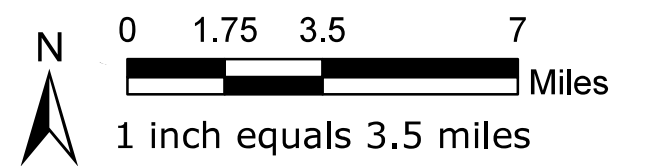
- Barre Town/City
- Montpelier School District
- Orange North
- Orleans Southwest
- Washington Central
- Washington Northeast
- Washington South
- Washington West

Public Schools

- Elementary, Middle, High School
- College / Post Secondary School
- Vocational School

Roads:

- Class 1 Town Highway
- Class 2 Town Highway
- Class 3 Town Highway
- State Highway; US Highway
- Interstate

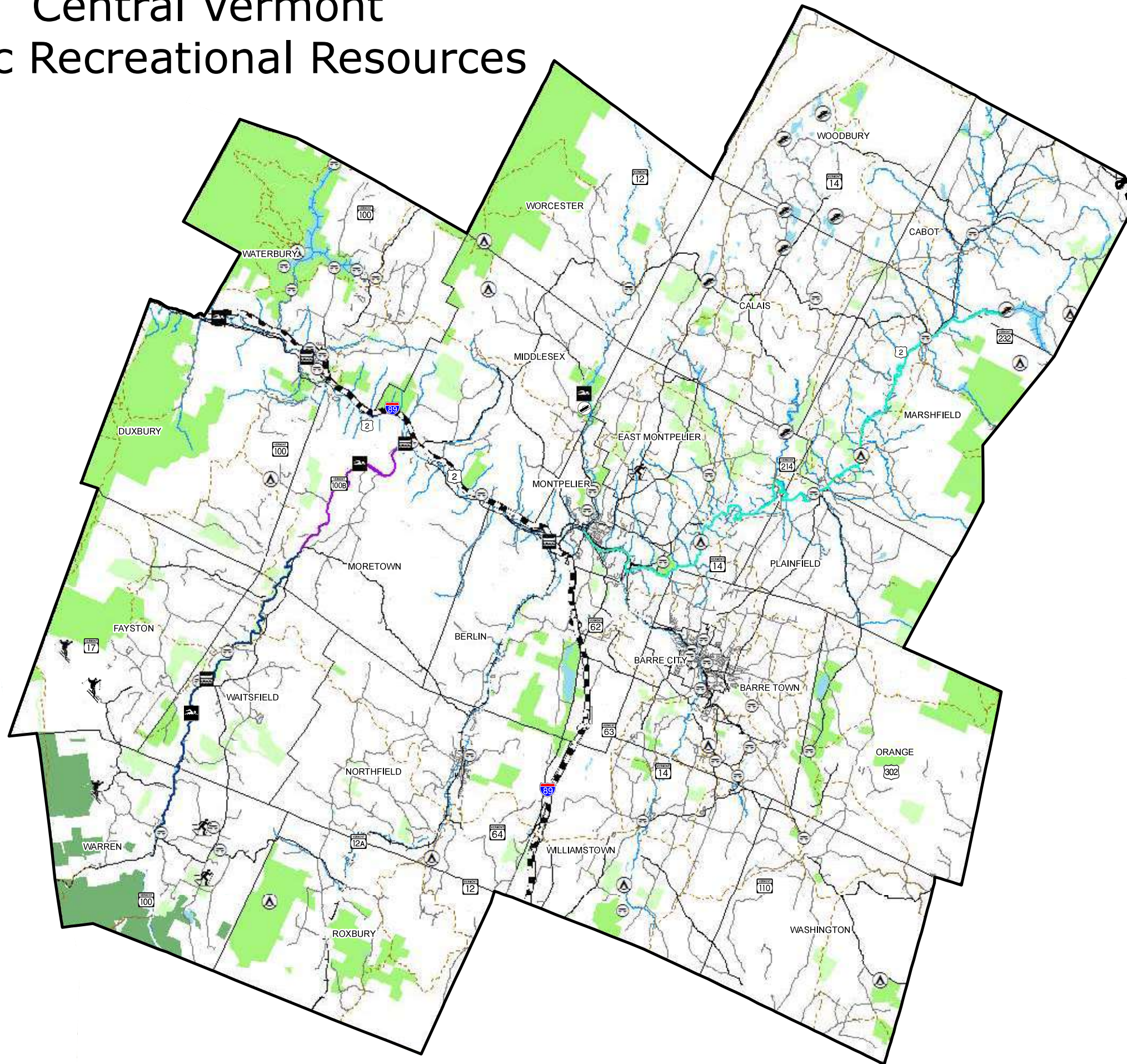


Data Source:
 School Districts & Facilities - VCGI, 2007
 Roads - VTrans, VGIS 2007
 Regional Boundaries - VCGI 2006

Created 12/27/07 by CVRPC
 M:/Region/RegionalPlan_Update200/GIS/
 Maps/Educational_Facilities.mxd

Data is only as accurate as the original source materials. This map is for planning purposes. This map may contain errors and omissions.

Central Vermont Public Recreational Resources



Legend

Conserved Lands

- Green Mountain National Forest
- State and Municipal Public Lands
- Private Conserved Lands

Recreational Sites

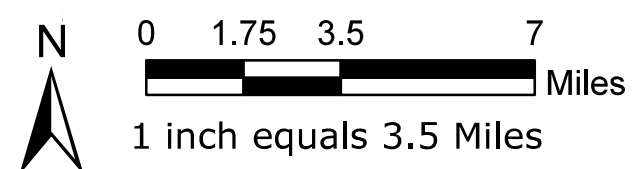
- Alpine Skiing
- Nordic Skiing
- Boat & Fishing Access (Lakes, Ponds, & Marshes)
- Swimming Areas
- Canoe Access
- Public Campgrounds
- Public Recreational Fields & Parks
- Trails (VAST, Long Trail, Catamount Trail, etc.)

Recreational River Uses

- Expert Kayaks & Open Boats
- Mixed / Whitewater Rapids
- Open Boats

Roads:

- Class 1 Town Highway
- Class 2 Town Highway
- Class 3 Town Highway
- State Highway; US Highway
- Interstate



Data Source:
 Conserved Lands: UVM, 2005
 Recreational Sites: VCGI, 2007
 Recreational River Reaches: ANR, 2007
 Roads - VTrans, VGIS 2007
 Tourism Trails: ANR, 2007
 Created 2/25/08 by CVRPC
 M:/Region/RegionalPlan_Update2008/GIS/
 Maps/Public Recreational Resources.mxd

Data is only as accurate as the original source materials. This map is for planning purposes. This map may contain errors and omissions.